



REGIONE DEL VENETO – Assessorato alle Politiche Sanitarie

ISTITUTO ONCOLOGICO VENETO - IRCCS  
Registro Tumori del Veneto

# **ANALISI DELL'INCIDENZA DEI TUMORI IN PROVINCIA DI BELLUNO**

**Registro Tumori del Veneto – RTV**

**Baracco M, Bovo E, Dal Cin A, Fiore AR, Greco A, Guzzinati S, Monetti D,  
Musumeci S, Rosano A, Stocco CF, Tognazzo S e Zambon P.**

**[www.registrotumoriveneto.it](http://www.registrotumoriveneto.it)**

**ANALISI DELL'INCIDENZA DEI TUMORI  
IN PROVINCIA DI BELLUNO**

Indice

- 2 Indicatori
- 3 Popolazione media residente in provincia di Belluno nel periodo 1998-2002
- 4 Confronto tra la popolazione del 1990 e quella del 2002  
Indice di vecchiaia
- 5 Numero medio di casi incidenti per anno. Periodo 1998-2002
- 6 Tassi di incidenza per classi di età e sesso. Periodo 1998-2002
- 8 Numero medio di decessi per anno. Periodo 1998-2002
- 9 Rapporti standardizzati di incidenza (SIR). Periodo 1998-2002
- 14 Analisi dell'andamento nel tempo dell'incidenza. Periodo 1990-2002
- 21 N. di casi incidenti, tassi di incidenza grezzi e standardizzati
- 26 N. di casi incidenti per sesso, sede e classi di età quinquennali
- 28 Tassi specifici di incidenza per sesso, sede e classi di età quinquennali

## **INDICATORI**

### **Numero di casi**

Numero totale di casi stimati nel periodo indicato

### **Tasso grezzo**

Tasso grezzo annuale per 100.000 residenti. Risulta dal rapporto tra il numero medio annuo di casi nel periodo e la popolazione media residente nell'area

### **Tasso specifico per età**

Tasso specifico annuale per 100.000 residenti. Risulta dal rapporto tra il numero medio di casi annuo in ciascuna classe quinquennale di età e la popolazione media residente nella corrispondente classe

### **Tasso standardizzato**

Tasso annuale standardizzato per età. Si calcola applicando i tassi specifici per età della popolazione in esame alla popolazione standard

### **Rapporti standardizzati di incidenza (SIR)**

Rapporto tra il numero di casi stimati nella popolazione in esame e il numero di casi atteso, ottenuto applicando alla struttura per età della popolazione in esame, i tassi specifici della popolazione di riferimento. Il rapporto è moltiplicato per 100

### **% VM**

Percentuale di casi con verifica microscopica

### **Indice di vecchiaia**

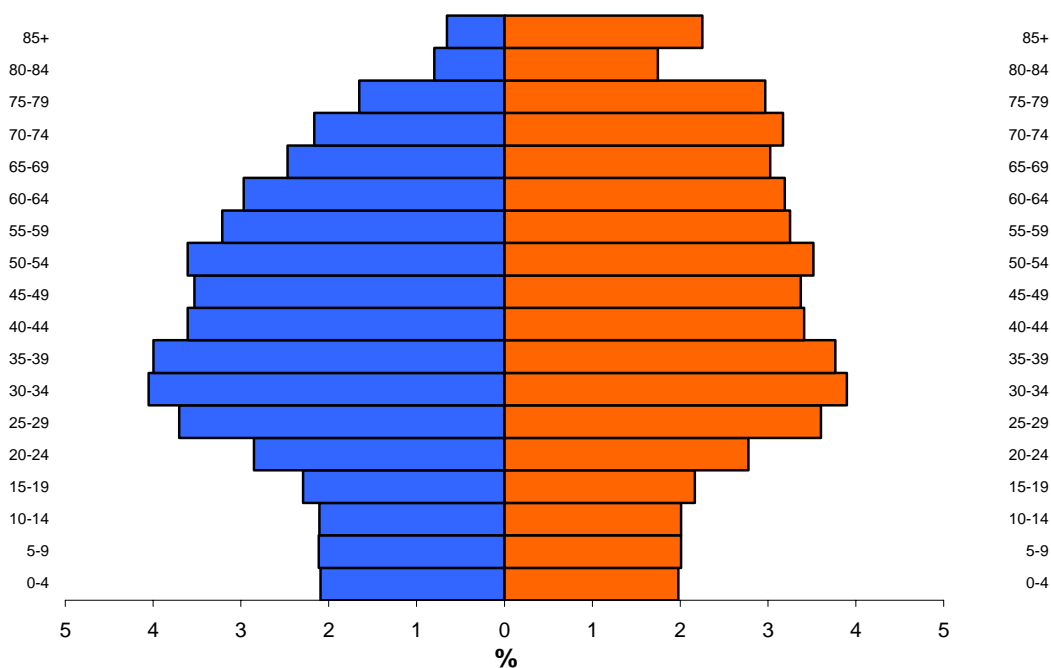
Rapporto percentuale tra la popolazione anziana (65 anni e oltre) e la popolazione infantile (0-14 anni)

### **Annual Percent Change (APC)**

Stima della variazione annua percentuale dell'incidenza.

**Provincia di Belluno**  
**Popolazione media 1998-2002**

Età	Maschi	Femmine	Totale
0-4	4411	4172	8,582
5-9	4457	4240	8,698
10-14	4443	4241	8,684
15-19	4833	4569	9,401
20-24	6012	5853	11,866
25-29	7809	7594	15,403
30-34	8538	8213	16,751
35-39	8423	7941	16,364
40-44	7604	7191	14,795
45-49	7441	7107	14,548
50-54	7599	7419	15,018
55-59	6770	6857	13,628
60-64	6260	6727	12,987
65-69	5205	6379	11,585
70-74	4565	6684	11,249
75-79	3489	6256	9,745
80-84	1683	3681	5,364
85+	1378	4749	6,128
<b>Totale</b>	<b>100,921</b>	<b>109,874</b>	<b>210,795</b>

**Maschi****Femmine**

CONFRONTO TRA LA POPOLAZIONE RESIDENTE NEL 1990 E QUELLA RESIDENTE NEL 2002  
PER GRANDI CLASSI DI ETÀ - PROVINCIA DI BELLUNO

**Maschi**

Classi di età	1990	2002	Variazione %
0-19	22600	18122	-20%
20-64	64862	65979	2%
65-74	8501	9825	16%
75+	5465	7011	28%
<b>Totale</b>	<b>101428</b>	<b>100937</b>	<b>0%</b>

**Femmine**

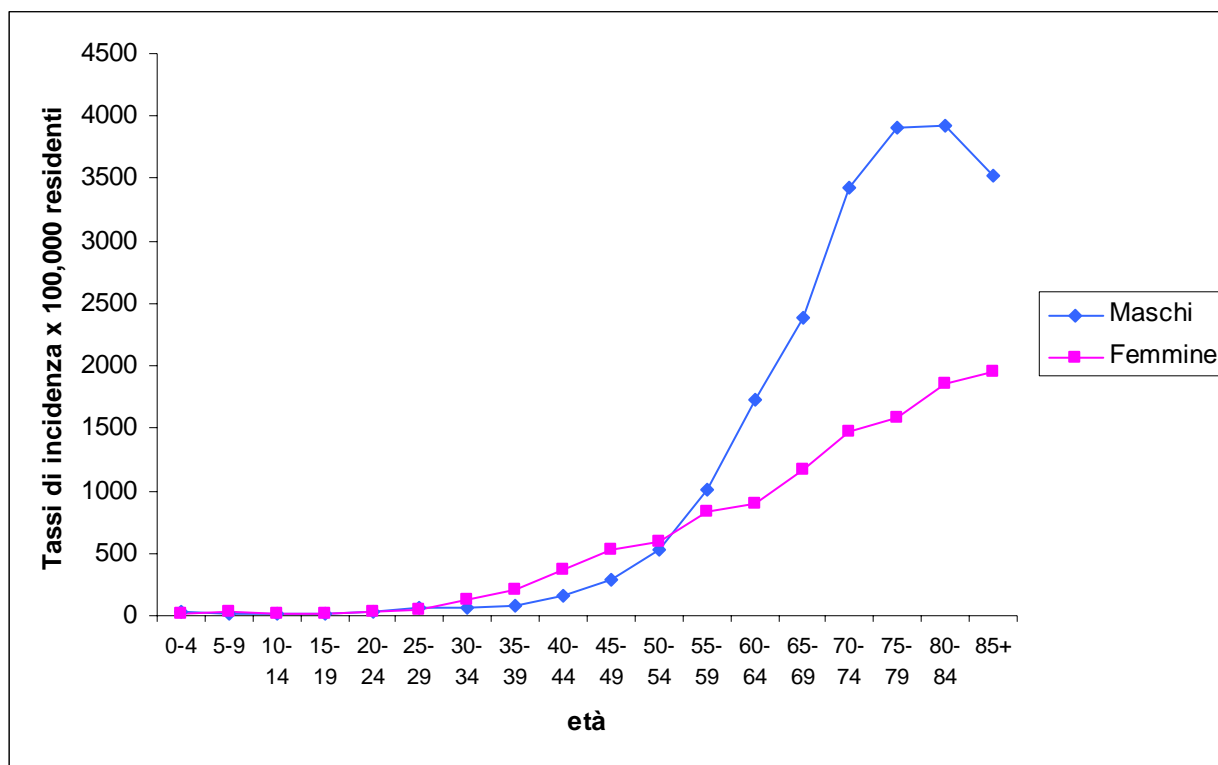
Classi di età	1990	2002	Variazione %
0-19	21831	17254	-21%
20-64	64834	64347	-1%
65-74	12310	12567	2%
75+	12244	15398	26%
<b>Totale</b>	<b>111219</b>	<b>109566</b>	<b>-1%</b>

INDICE DI VECCHIAIA: RAPPORTO PERCENTUALE TRA LA POPOLAZIONE ANZIANA  
(65 ANNI E OLTRE) E LA POPOLAZIONE INFANTILE (0-14 ANNI). PERIODO 1990-2002

	<b>1990</b>		<b>2002</b>	
	Belluno	Veneto	Belluno	Veneto
Maschi	93	77	124	105
Femmine	171	128	217	168
<b>Totale</b>	<b>131</b>	<b>102</b>	<b>170</b>	<b>136</b>

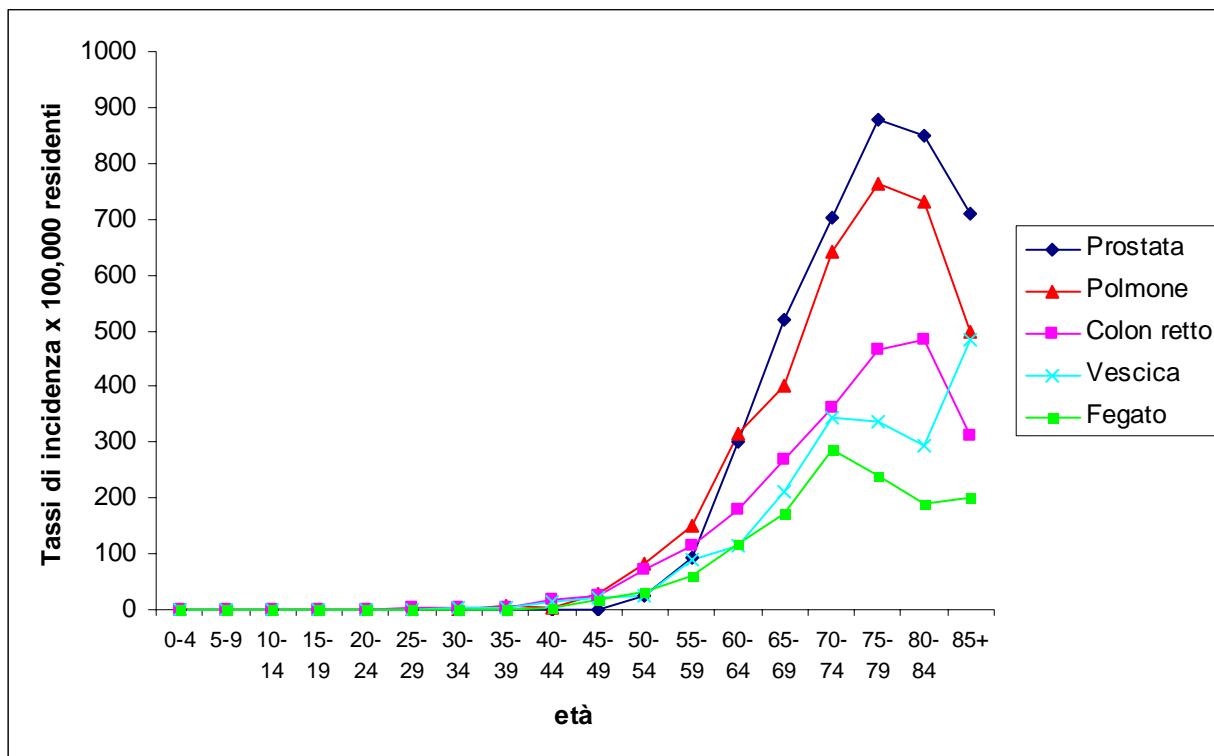
**NUMERO MEDIO DI CASI INCIDENTI DI TUMORE CHE SI VERIFICANO OGNI ANNO, DISTINTI PER SEDE. PROVINCIA DI BELLUNO. PERIODO 1998-2002**

Sede	Maschi	Sede	Femmine
Prostata	142	Mammella	207
Polmone	136	Colon retto	73
Colon retto	88	Polmone	50
Vescica	69	Utero	47
Fegato	52	Stomaco	36
Cavità orale	47	Pancreas	29
Stomaco	36	Linfoma non Hodgkin	28
Rene e altri organi urinari	32	Vescica	23
Linfoma non Hodgkin	25	Melanoma della pelle	22
Pancreas	24	Ovaio	21
Laringe	24	Fegato	20
Esofago	20	Rene e altri organi urinari	16
Altre sedi	113	Altre sedi	124
Tutte eccetto pelle non melanomi	808	Tutte eccetto pelle non melanomi	696

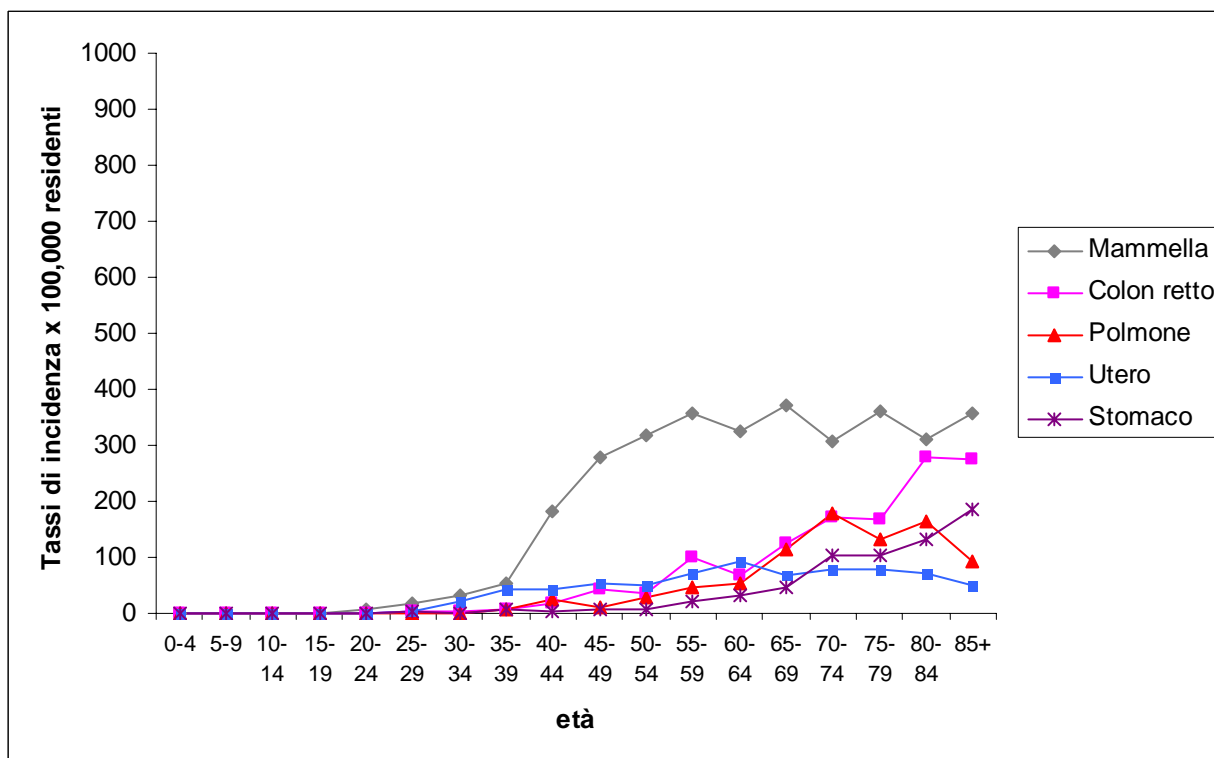
**TASSI DI INCIDENZA PER CLASSI DI ETÀ' PER TUTTI I TUMORI ECCETTO PELLE NON MELANOMI IN PROVINCIA DI BELLUNO. PERIODO 1998-2002**

**TASSI DI INCIDENZA PER CLASSI DI ETÀ PER LE SEDI PIÙ FREQUENTI IN PROVINCIA DI BELLUNO. PERIODO 1998-2002**

**MASCHI**



**FEMMINE**





**NUMERO MEDIO DI DECESSI PER TUMORE CHE SI VERIFICANO OGNI ANNO, DISTINTI PER SEDE.  
PROVINCIA DI BELLUNO. PERIODO 1998-2002**

<b>Maschi</b>		<b>Femmine</b>	
Polmone	127	Mammella	50
Fegato	41	Polmone	37
Colon retto	38	Colon retto	33
Stomaco	23	Pancreas	27
Prostata	23	Stomaco	23
Pancreas	22	Fegato	15
Cavità orale	17	Utero	13
Esofago	16	Ovaio	12
Rene	14	Linfomi non Hodgkin	10
Vescica	13	Leucemie	9
Altre sedi	82	Altre sedi	79
Tutte le sedi	416	Tutte le sedi	308

**RAPPORTI STANDARDIZZATI DI INCIDENZA (SIR) IN PROVINCIA DI BELLUNO PERIODO 1998-2002  
MASCHI**
**PROVINCIA DI BELLUNO**

sede	osservati	attesi	SIR	interv. di conf. al 95%	
				lim. inf.	lim. sup.
CAVITA' ORALE	<b>237</b>	<b>146.0</b>	<b>162.3</b>	<b>142.3</b>	<b>184.3</b>
ESOFAGO	<b>101</b>	<b>63.3</b>	<b>159.5</b>	<b>129.9</b>	<b>193.8</b>
STOMACO	179	161.6	110.7	95.1	128.2
COLON RETTO	442	466.6	94.7	86.1	104.0
FEGATO	<b>261</b>	<b>182.1</b>	<b>143.4</b>	<b>126.5</b>	<b>161.8</b>
LARINGE	121	106.0	114.2	94.7	136.4
POLMONE	681	673.8	101.1	93.6	108.9
PROSTATA	709	665.6	106.5	98.8	114.7
VESCICA	344	329.0	104.6	93.8	116.2
RENE E ALTRI ORGANI URINARI	159	160.8	98.9	84.1	115.5
LINFOMI NON HODGKIN	123	119.2	103.2	85.7	123.1
ALTRE SEDI	685	666.7	102.7	95.2	110.7
TUTTI ECCEPTE PELLE	<b>4042</b>	<b>3740.9</b>	<b>108.0</b>	<b>104.7</b>	<b>111.4</b>

**ex ULSS 1 Cadore**
**ex ULSS 2 Agordo**

sede	osservati	attesi	SIR	interv. di conf. al 95%		osservati	attesi	sir	interv. di conf. al 95%	
				lim. inf.	lim. sup.				lim. inf.	lim. sup.
CAVITA' ORALE	<b>46</b>	<b>26.6</b>	<b>172.6</b>	<b>126.4</b>	<b>230.3</b>	<b>26</b>	<b>15.2</b>	<b>170.8</b>	<b>111.5</b>	<b>251.1</b>
STOMACO	26	28.9	90.0	58.8	132.3	17	17.5	97.3	56.7	155.7
COLON RETTO	86	83.3	103.2	82.6	127.5	38	50.0	76.0	53.8	104.4
FEGATO	<b>58</b>	<b>32.6</b>	<b>178.1</b>	<b>135.2</b>	<b>230.3</b>	<b>35</b>	<b>19.4</b>	<b>180.4</b>	<b>125.6</b>	<b>250.9</b>
LARINGE	17	19.2	88.7	51.7	141.9	13	11.1	117.0	62.3	200.1
POLMONE	116	119.9	96.8	80.0	116.1	64	72.3	88.6	68.2	113.1
PROSTATA	107	117.9	90.7	74.3	109.6	64	72.0	88.9	68.4	113.5
VESCICA	<b>79</b>	<b>58.6</b>	<b>134.8</b>	<b>106.7</b>	<b>168.0</b>	<b>49</b>	<b>35.4</b>	<b>138.6</b>	<b>102.5</b>	<b>183.2</b>
RENE E ALTRI ORG. URIN.	20	29.0	68.9	42.1	106.1	10	17.0	58.8	28.2	108.1
LINFOMI NON HODGKIN	19	21.6	88.1	53.0	137.5	12	12.6	95.2	49.2	166.6
ALTRE SEDI	135	131.9	102.4	85.8	121.1	83	77.5	107.0	85.3	132.7
TUTTI ECCEPTE PELLE	709	669.5	105.9	98.2	114.0	411	400.0	102.8	93.1	113.2

**ex ULSS 3 Belluno**
**ex ULSS 4 Feltre**

sede	osservati	attesi	sir	interv. di conf. al 95%		osservati	attesi	sir	interv. di conf. al 95%	
				lim. inf.	lim. sup.				lim. inf.	lim. sup.
CAVITA' ORALE	<b>95</b>	<b>65.0</b>	<b>146.2</b>	<b>118.3</b>	<b>178.8</b>	<b>70</b>	<b>39.8</b>	<b>176.0</b>	<b>137.2</b>	<b>222.3</b>
STOMACO	76	71.7	106.0	83.5	132.7	<b>60</b>	<b>44.6</b>	<b>134.7</b>	<b>102.8</b>	<b>173.3</b>
COLON RETTO	166	207.0	80.2	68.5	93.4	<b>152</b>	<b>128.7</b>	<b>118.1</b>	<b>100.1</b>	<b>138.4</b>
FEGATO	<b>105</b>	<b>80.8</b>	<b>130.0</b>	<b>106.3</b>	<b>157.4</b>	63	50.2	125.4	96.4	160.5
LARINGE	56	47.1	118.9	89.8	154.5	35	29.1	120.5	83.9	167.5
POLMONE	315	298.8	105.4	94.1	117.7	186	186.3	99.8	86.0	115.2
PROSTATA	309	294.8	104.8	93.4	117.2	<b>229</b>	<b>184.6</b>	<b>124.0</b>	<b>108.5</b>	<b>141.2</b>
VESCICA	137	145.9	93.9	78.8	111.0	79	90.9	86.9	68.8	108.3
RENE E ALTRI ORG. URIN.	88	71.4	123.2	98.8	151.8	41	44.1	93.0	66.7	126.2
LINFOMI NON HODGKIN	63	53.0	118.8	91.3	152.0	29	32.6	89.0	59.7	128.2
ALTRE SEDI	344	324.7	105.9	95.0	117.8	224	199.4	112.3	98.1	128.0
TUTTI ECCEPTE PELLE	<b>1754</b>	<b>1660.1</b>	<b>105.7</b>	<b>100.8</b>	<b>110.7</b>	<b>1168</b>	<b>1030.3</b>	<b>113.4</b>	<b>107.0</b>	<b>120.1</b>

*In corsivo le sedi con deficit significativo di incidenza rispetto all'area coperta dal Registro*

**In grassetto le sedi con eccesso significativo di incidenza rispetto all'area coperta dal Registro**

**RAPPORTI STANDARDIZZATI DI INCIDENZA (SIR) IN PROVINCIA DI BELLUNO PERIODO 1998-2002  
FEMMINE**
**PROVINCIA DI BELLUNO**

sede	osservati	attesi	SIR	interv. di conf. al 95%	
				lim. inf.	lim. sup.
STOMACO	<b>178</b>	<b>127.4</b>	<b>139.7</b>	<b>119.9</b>	<b>161.8</b>
COLON RETTO	364	409.5	88.9	80.0	98.5
FEGATO	<b>100</b>	<b>80.9</b>	<b>123.5</b>	<b>100.5</b>	<b>150.3</b>
PANCREAS	143	130.4	109.6	92.4	129.1
POLMONE	<b>250</b>	<b>216.0</b>	<b>115.7</b>	<b>101.8</b>	<b>131.0</b>
MELANOMA DELLA PELLE	<b>112</b>	<b>89.4</b>	<b>125.2</b>	<b>103.1</b>	<b>150.7</b>
MAMMELLA	1037	983.3	105.5	99.1	112.1
UTERO	<b>235</b>	<b>197.2</b>	<b>119.2</b>	<b>104.4</b>	<b>135.4</b>
OVAIO	106	100.3	105.7	86.5	127.8
VESCICA	113	99.2	113.9	93.9	137.0
LINFOMI NON HODGKIN	139	122.8	113.2	95.2	133.7
ALTRE SEDI	702	700.1	100.3	92.99	108
TUTTI ECCETTO PELLE	<b>3479</b>	<b>3256.6</b>	<b>106.8</b>	<b>103.3</b>	<b>110.4</b>

**ex ULSS 1 Cadore**
**ex ULSS 2 Agordo**

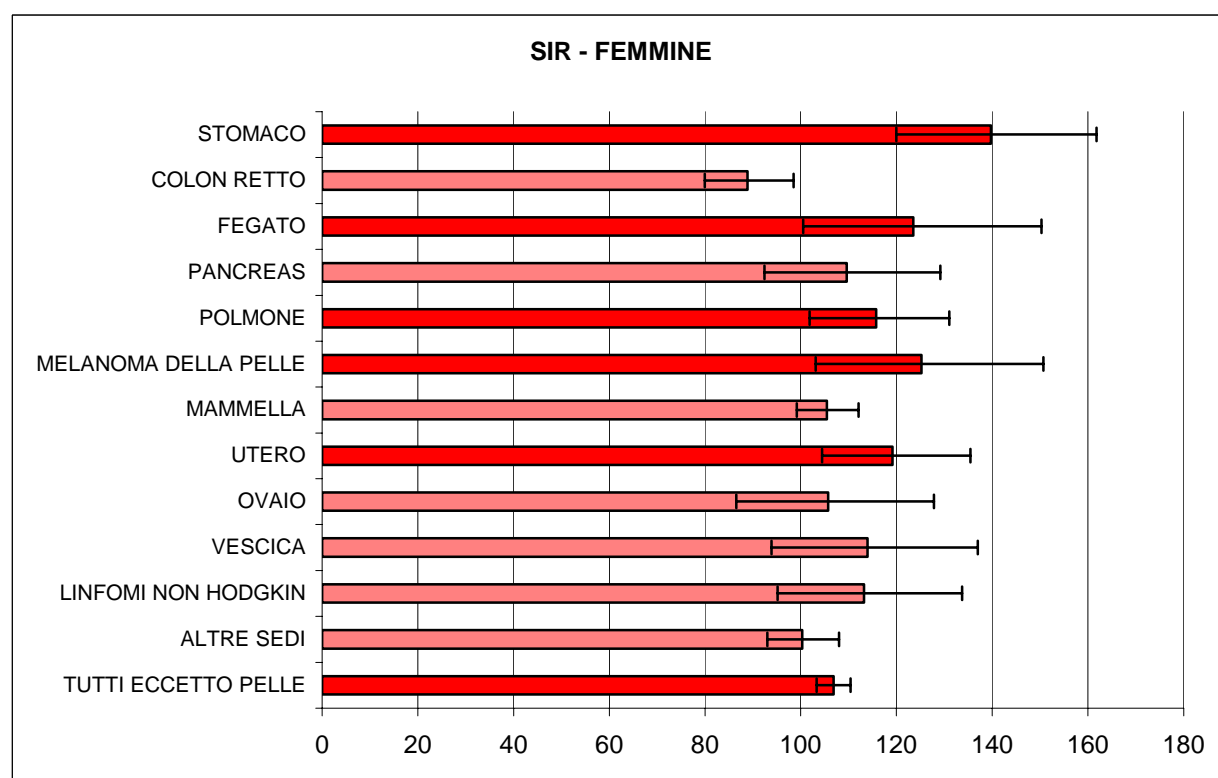
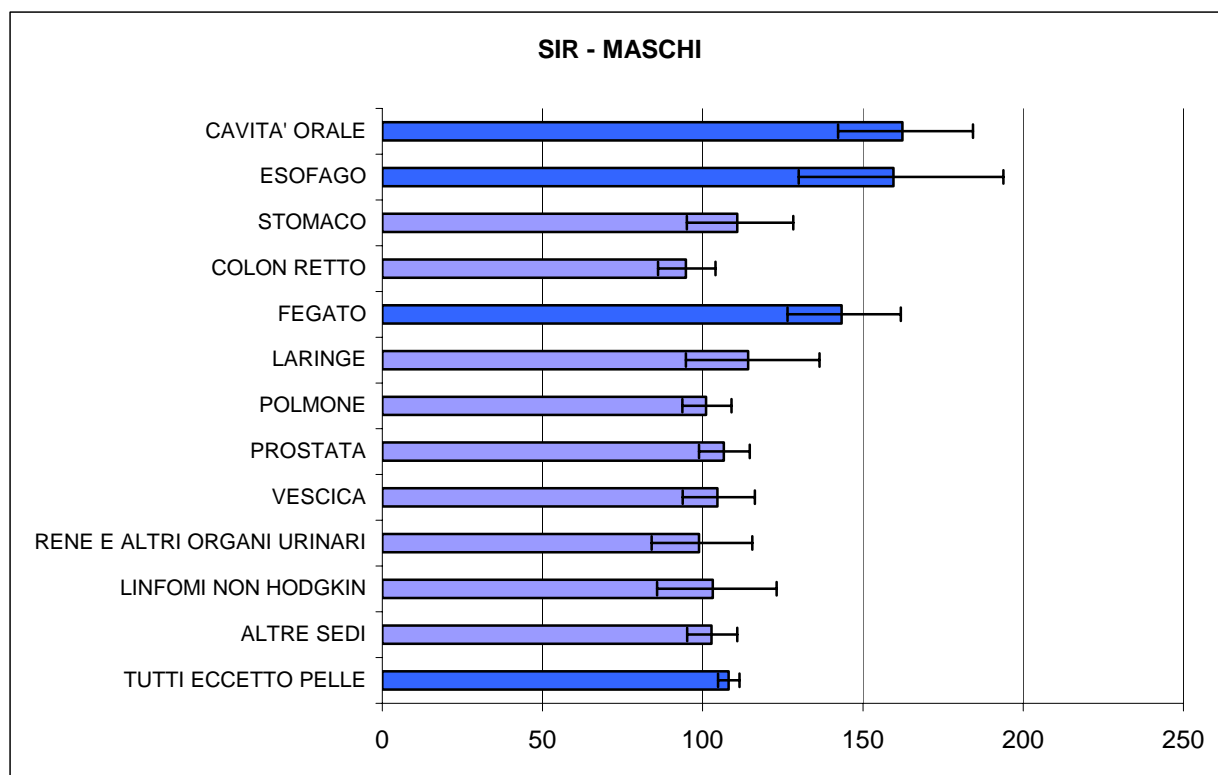
sede	osservati	attesi	SIR	interv. di conf. al 95%		osservati	attesi	sir	interv. di conf. al 95%	
				lim. inf.	lim. sup.				lim. inf.	lim. sup.
STOMACO	33	23.2	142.2	97.9	199.7	17	14.3	118.7	69.2	189.8
COLON RETTO	69	75.2	91.7	71.4	116.1	31	45.2	68.5	46.6	97.3
PANCREAS	28	23.8	117.7	78.3	170.7	15	14.7	102.2	57.2	168.6
POLMONE	52	39.6	131.2	98.0	172.0	24	23.8	100.9	64.7	149.3
MELANOMA DELLA PELLE	20	16.7	119.4	73.0	183.9	5	9.3	53.6	17.4	125.0
MAMMELLA	200	183.4	109.1	94.5	125.3	104	103.4	100.5	82.2	121.8
UTERO	47	36.9	127.5	93.7	169.5	27	20.8	130.1	85.7	189.9
OVAIO	21	18.6	113.1	70.0	173.0	14	10.7	130.3	71.1	218.8
VESCICA	25	18.2	137.4	88.9	203.3	11	11.0	100.3	50.1	179.6
LINFOMI NON HODGKIN	30	22.7	132.3	89.3	189.2	8	13.4	59.8	25.8	117.8
ALTRE SEDI	161	143.5	112.2	95.5	130.9	89	85.7	103.8	83.4	127.8
TUTTI ECCETTO PELLE	<b>686</b>	<b>601.8</b>	<b>114.0</b>	<b>105.6</b>	<b>122.9</b>	345	352.3	97.9	87.9	108.8

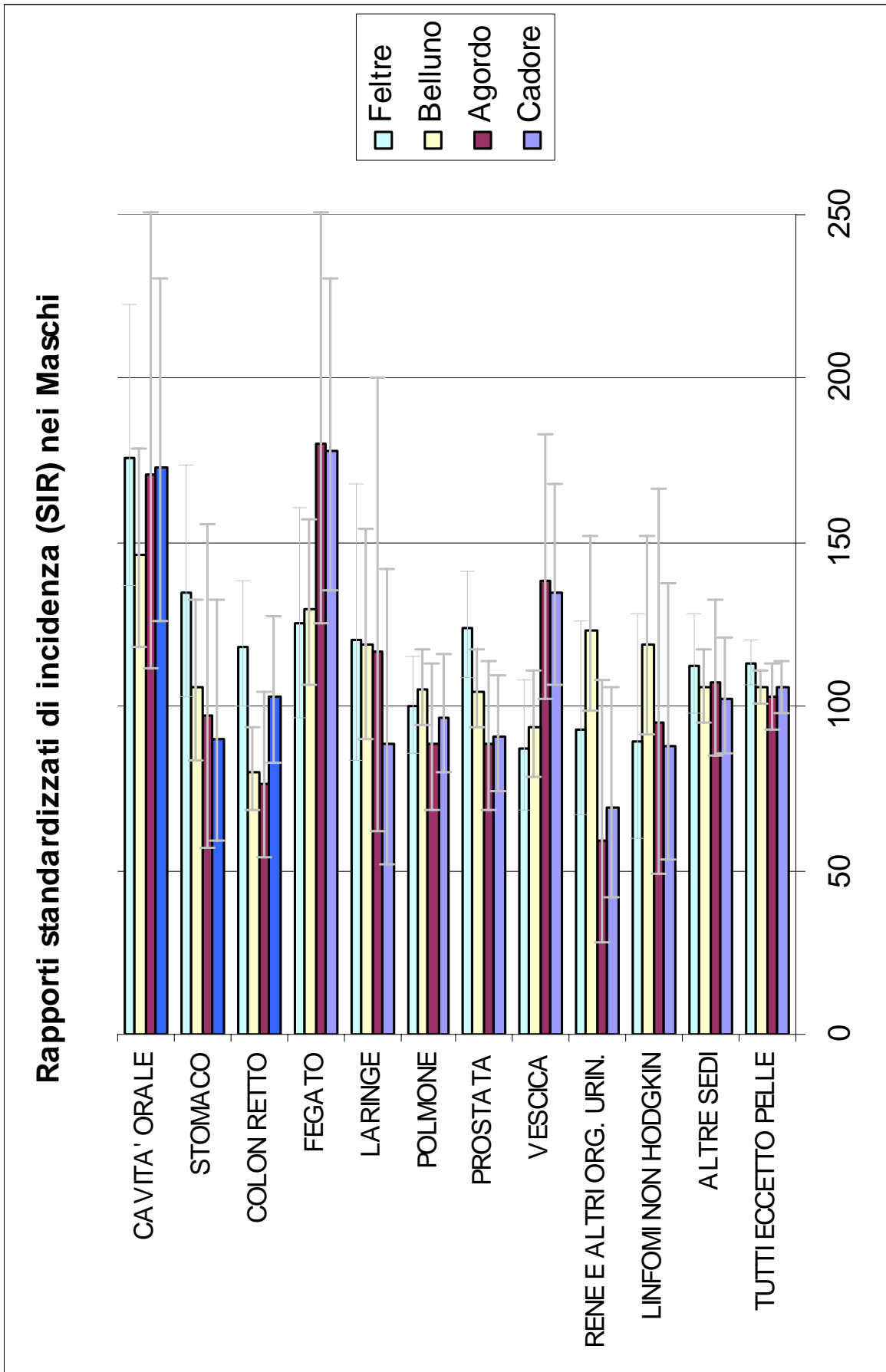
**ex ULSS 3 Belluno**
**ex ULSS 4 Feltre**

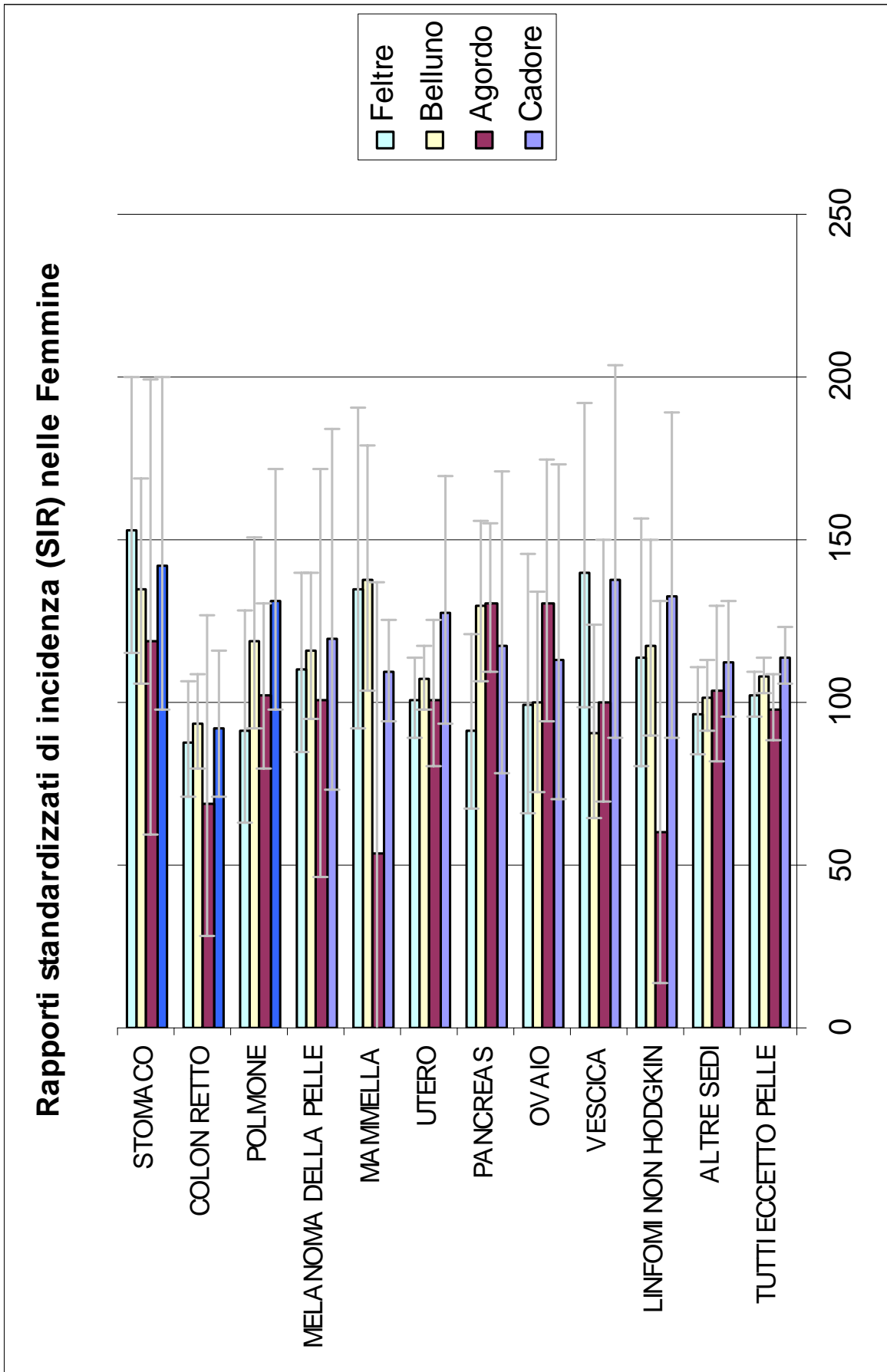
sede	osservati	attesi	sir	interv. di conf. al 95%		osservati	attesi	sir	interv. di conf. al 95%	
				lim. inf.	lim. sup.				lim. inf.	lim. sup.
STOMACO	<b>74</b>	<b>55.0</b>	<b>134.6</b>	<b>105.7</b>	<b>169.0</b>	<b>54</b>	<b>35.3</b>	<b>153.1</b>	<b>115.0</b>	<b>199.7</b>
COLON RETTO	166	178.1	93.2	79.6	108.5	98	112.2	87.4	70.9	106.5
PANCREAS	67	56.3	119.0	92.2	151.1	33	36.0	91.6	63.0	128.6
POLMONE	109	94.1	115.9	95.2	139.8	65	59.1	109.9	84.8	140.1
MELANOMA DELLA PELLE	<b>55</b>	<b>39.9</b>	<b>137.7</b>	<b>103.8</b>	<b>179.3</b>	32	23.7	135.1	92.4	190.7
MAMMELLA	467	435.5	107.2	97.7	117.4	266	263.7	100.9	89.1	113.8
UTERO	<b>113</b>	<b>87.3</b>	<b>129.4</b>	<b>106.6</b>	<b>155.5</b>	48	52.7	91.0	67.1	120.7
OVAIO	44	44.1	99.7	72.4	133.8	27	27.1	99.5	65.6	145.3
VESCICA	39	43.1	90.5	64.3	123.7	38	27.2	139.7	98.8	191.7
LINFOMI NON HODGKIN	63	53.7	117.3	90.1	150.0	38	33.3	114.0	80.6	156.4
ALTRE SEDI	346	340.7	101.6	91.1	112.8	206	213.4	96.5	83.8	110.7
TUTTI ECCETTO PELLE	<b>1543</b>	<b>1428.0</b>	<b>108.1</b>	<b>102.7</b>	<b>113.6</b>	905	883.8	102.4	95.8	109.3

*In corsivo le sedi con deficit significativo di incidenza rispetto all'area coperta dal Registro*

**In grassetto le sedi con eccesso significativo di incidenza rispetto all'area coperta dal Registro**

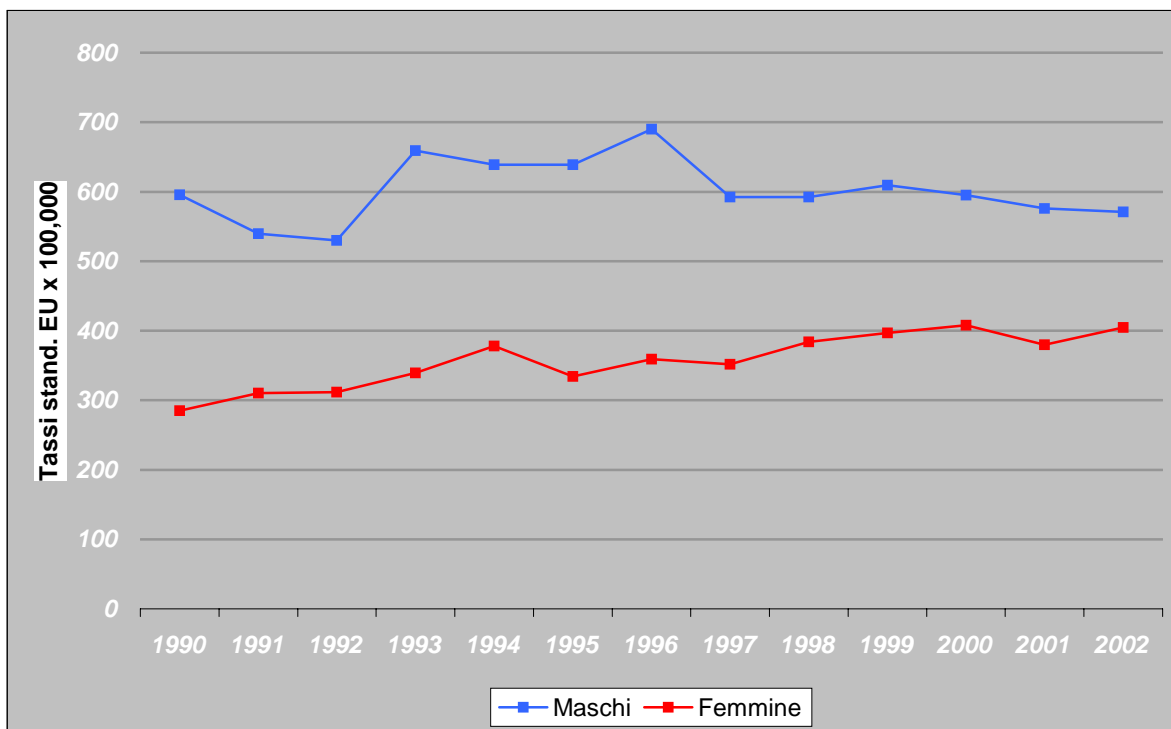
**RAPPORTI STANDARDIZZATI DI INCIDENZA (SIR) IN PROVINCIA DI BELLUNO PERIODO 1998-2002**






**ANDAMENTO DEI TASSI DI INCIDENZA STANDARDIZZATI SULLA POPOLAZIONE EUROPEA IN  
PROVINCIA DI BELLUNO NEL PERIODO 1990-2002**

**PROVINCIA DI BELLUNO - Tutti i tumori eccetto pelle**



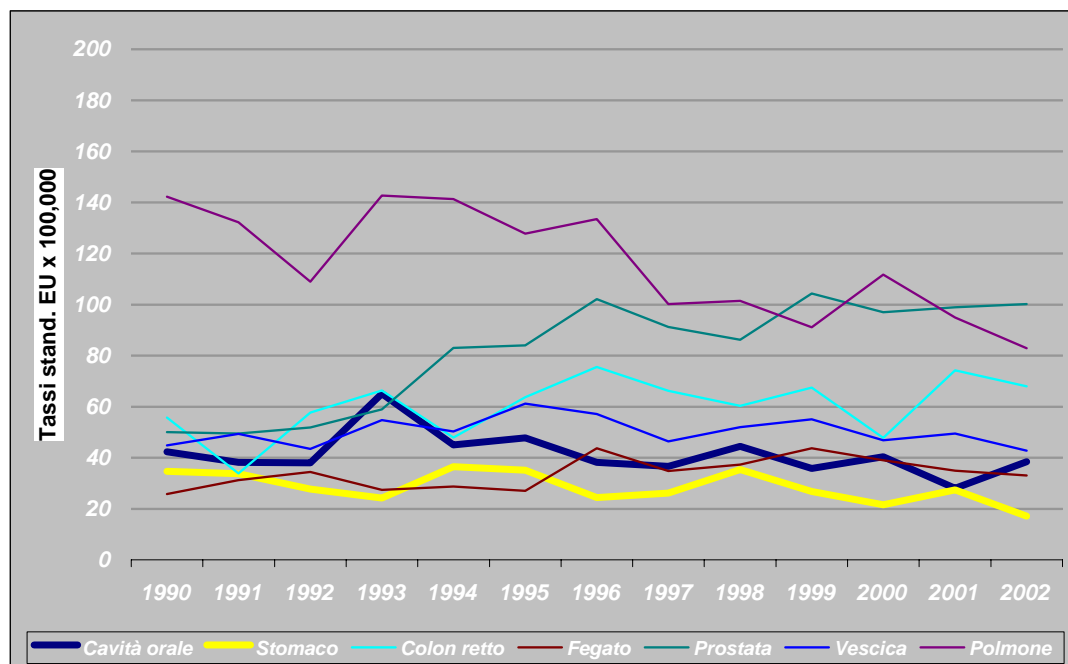
Stima della variazione percentuale annua (APC) e Intervallo di confidenza al 95%

Maschi -0.08 (-1.36 , 1.22 )

Femmine 2.57\* ( 1.70 , 3.45 )

\* variazione statisticamente significativa

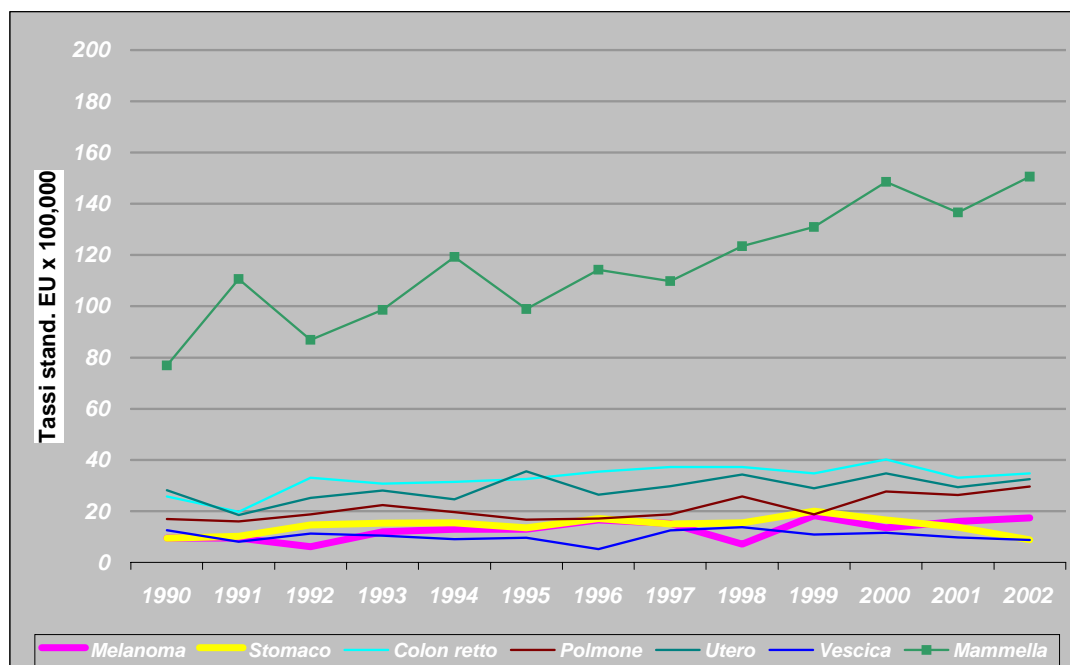
### PROVINCIA DI BELLUNO - Maschi



Stima della variazione percentuale annua (APC) e Intervallo di confidenza al 95%

Cavità orale	-2.35	(-5.46 , 0.86)	Polmone	-3.76*	(-5.60 , -1.88)
Stomaco	-3.10*	(-6.04 , -0.07)	Prostata	5.89*	(3.30 , 8.55)
Colon retto	2.24	(-0.76 , 5.34)	Vescica	-0.20	(-2.13 , 1.77)
Fegato	2.50	(-0.09 , 5.16)			

### PROVINCIA DI BELLUNO - Femmine



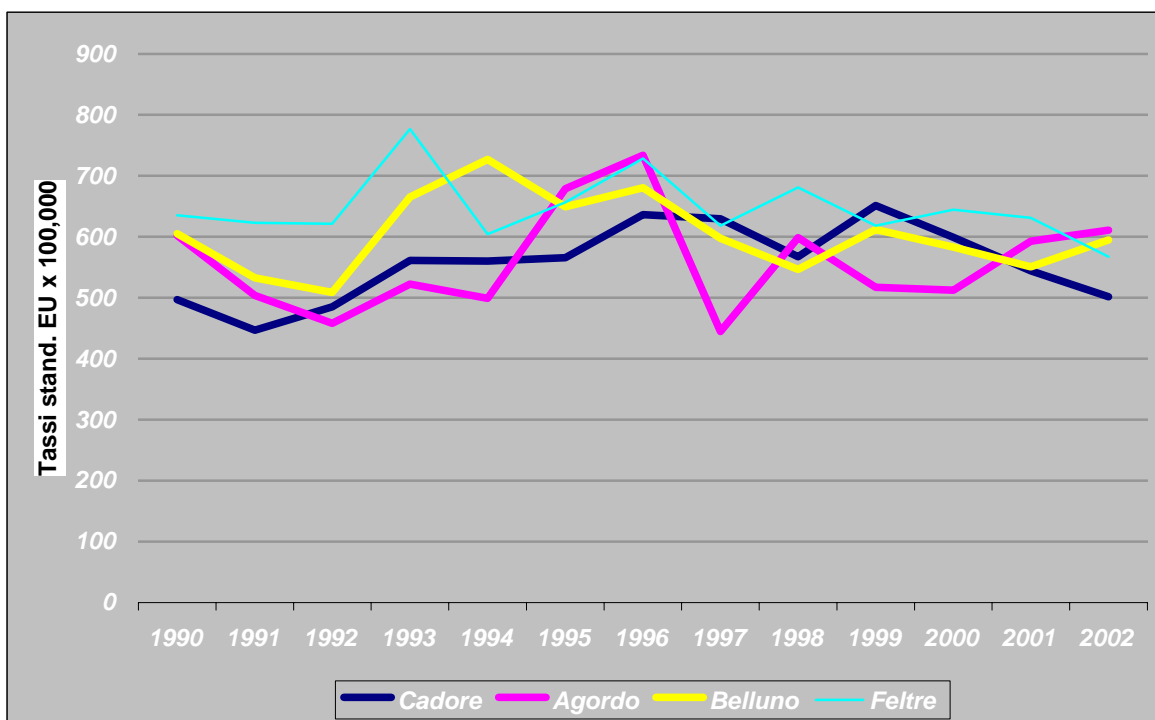
Stima della variazione percentuale annua (APC) e Intervallo di confidenza al 95%

Stomaco	1.57	(-2.46 , 5.77)	Mammella	4.46*	(2.86 , 6.09)
Colon retto	3.13*	(0.98 , 5.32)	Utero	2.52*	(0.20 , 4.89)
Polmone	4.44*	(2.01 , 6.93)	Vescica	0.01	(-3.66 , 3.81)
Melanoma	5.20*	(1.22 , 9.33)			

\* variazione statisticamente significativa



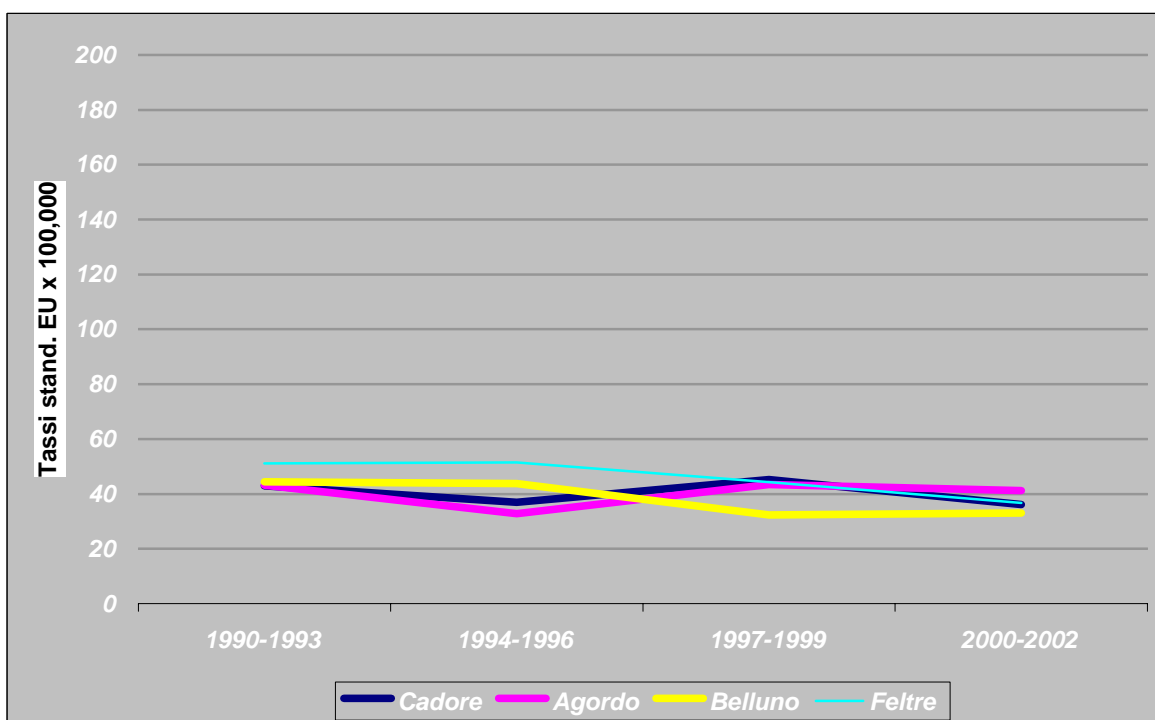
### Tutti i tumori eccetto pelle non melanomi - MASCHI



Stima della variazione percentuale annua (APC) e Intervallo di confidenza al 95%

Cadore	1.26	(-0.52 , 3.08)	Belluno	-0.34	(-2.09 , 1.43)
Agordo	0.59	(-1.95 , 3.20)	Feltre	-0.59	(-1.98 , 0.82)

### Cavità orale - MASCHI

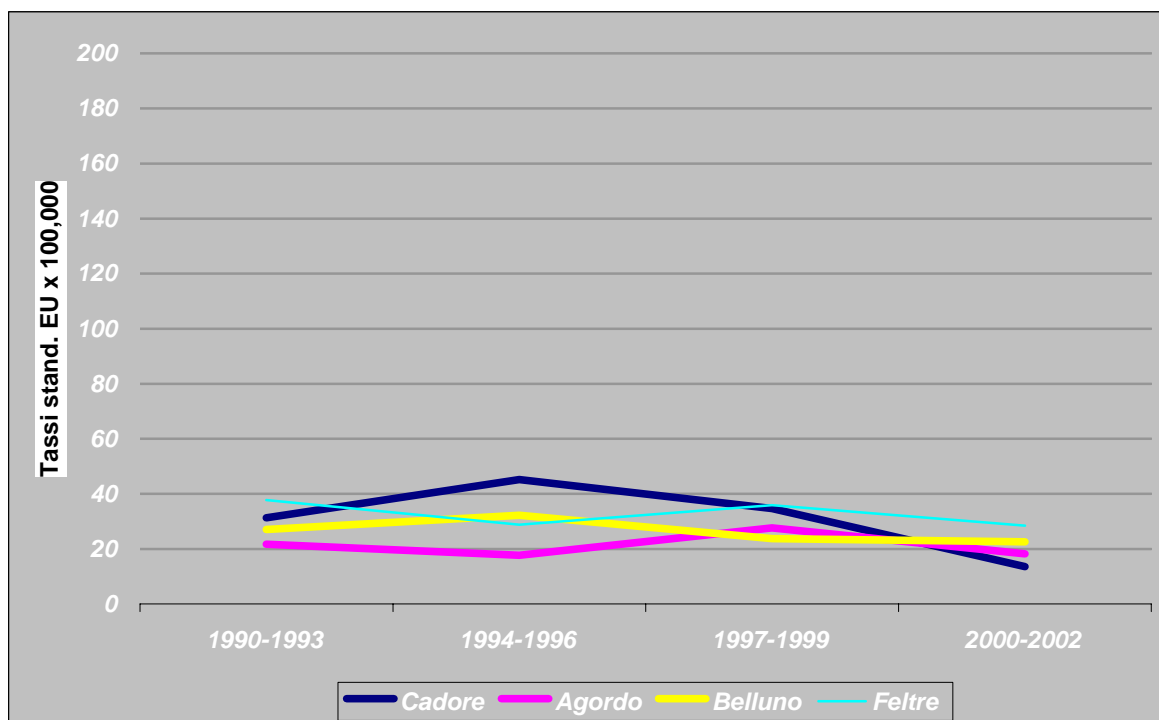


Stima della variazione percentuale annua (APC) e Intervallo di confidenza al 95%

Cadore	-1.07	(-5.07 , 3.09)	Belluno	-3.25*	(-5.90 , -0.53)
Agordo	-0.36	(-5.42 , 4.96)	Feltre	-3.47	(-10.05 , 3.59)

\* variazione statisticamente significativa

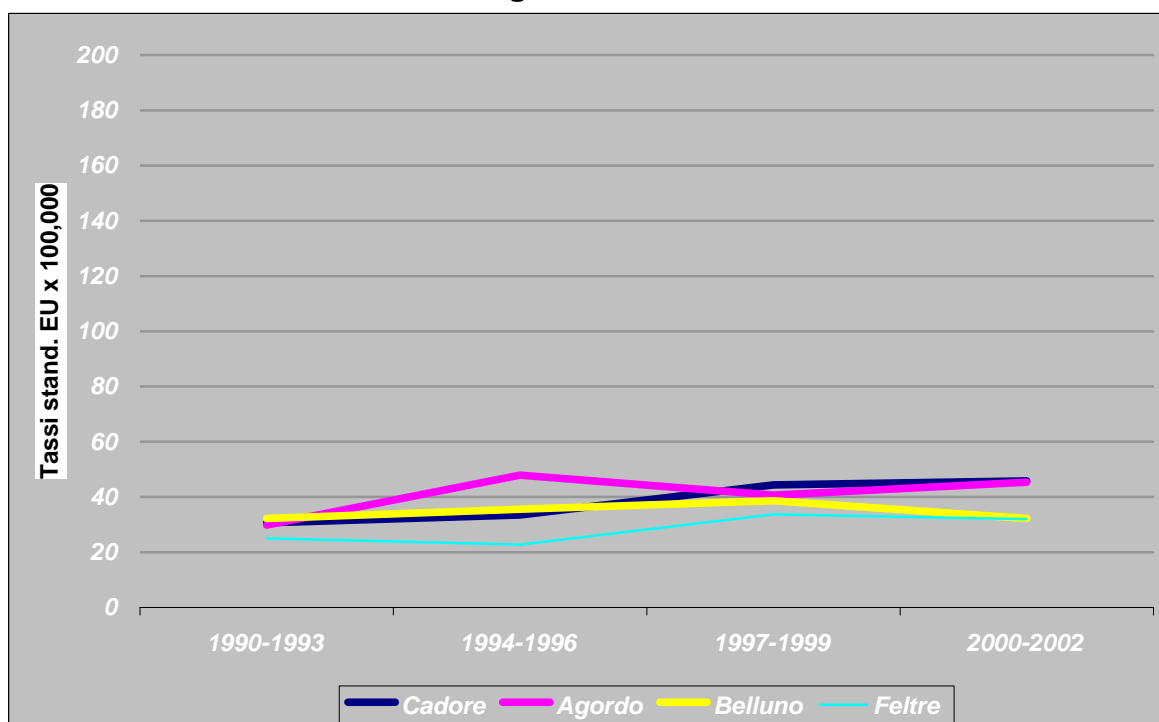
## Stomaco - MASCHI



Stima della variazione percentuale annua (APC) e Intervallo di confidenza al 95%

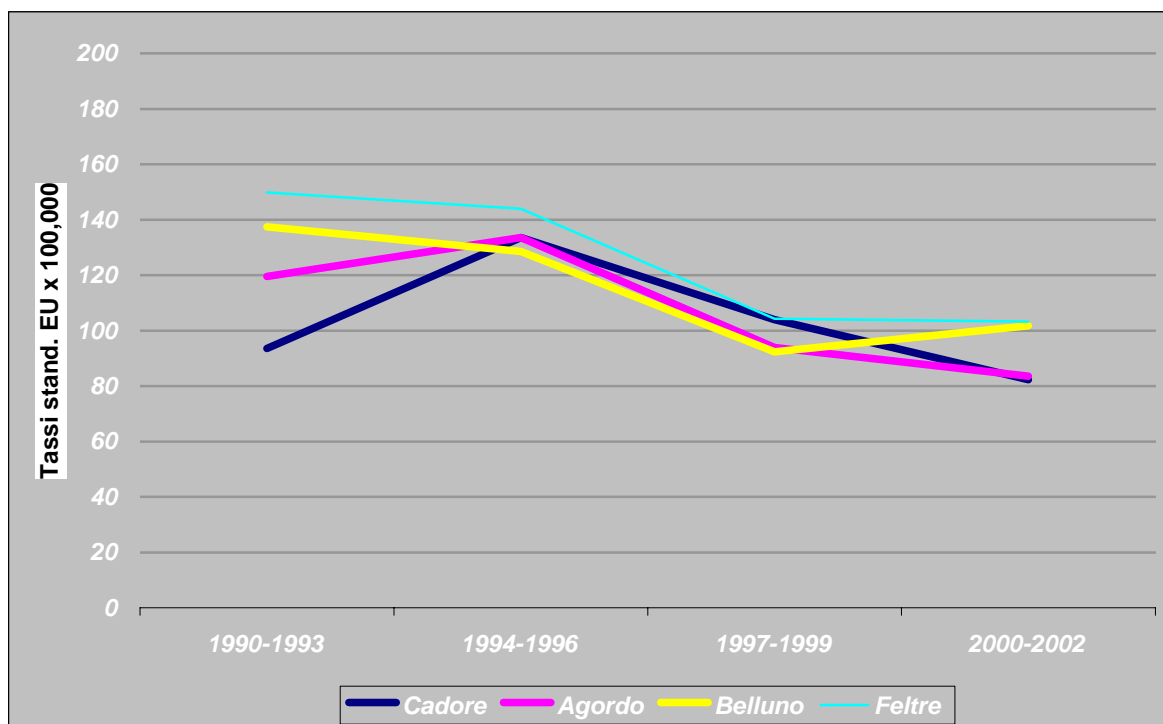
Cadore	-4.16	(-11.47 , 3.76)	Belluno	-2.95	(-6.45 , 0.67)
Agordo	0.76	(-9.44 , 12.11)	Feltre	-2.17	(-7.16 , 3.09)

## Fegato - MASCHI



Stima della variazione percentuale annua (APC) e Intervallo di confidenza al 95%

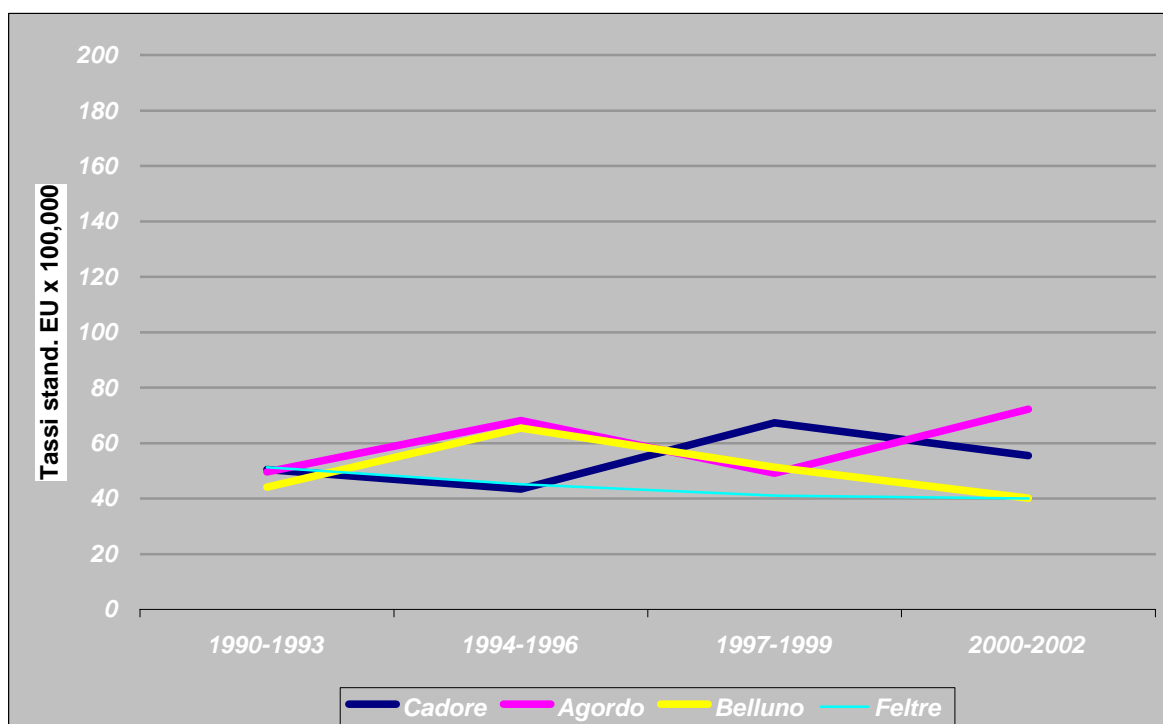
Cadore	3.81	(-4.10 , 12.37)	Belluno	0.88	(-1.82 , 3.66)
Agordo	3.47	(-3.16 , 10.55)	Feltre	3.29	(-2.52 , 9.44)

**Polmone - MASCHI**

Stima della variazione percentuale annua (APC) e Intervallo di confidenza al 95%

Cadore	-2.13	(-6.82, 2.79)	Belluno	-3.74*	(-5.84, -1.60)
Agordo	-4.98*	(-8.37, -1.46)	Feltre	-4.31*	(-6.83, -1.71)

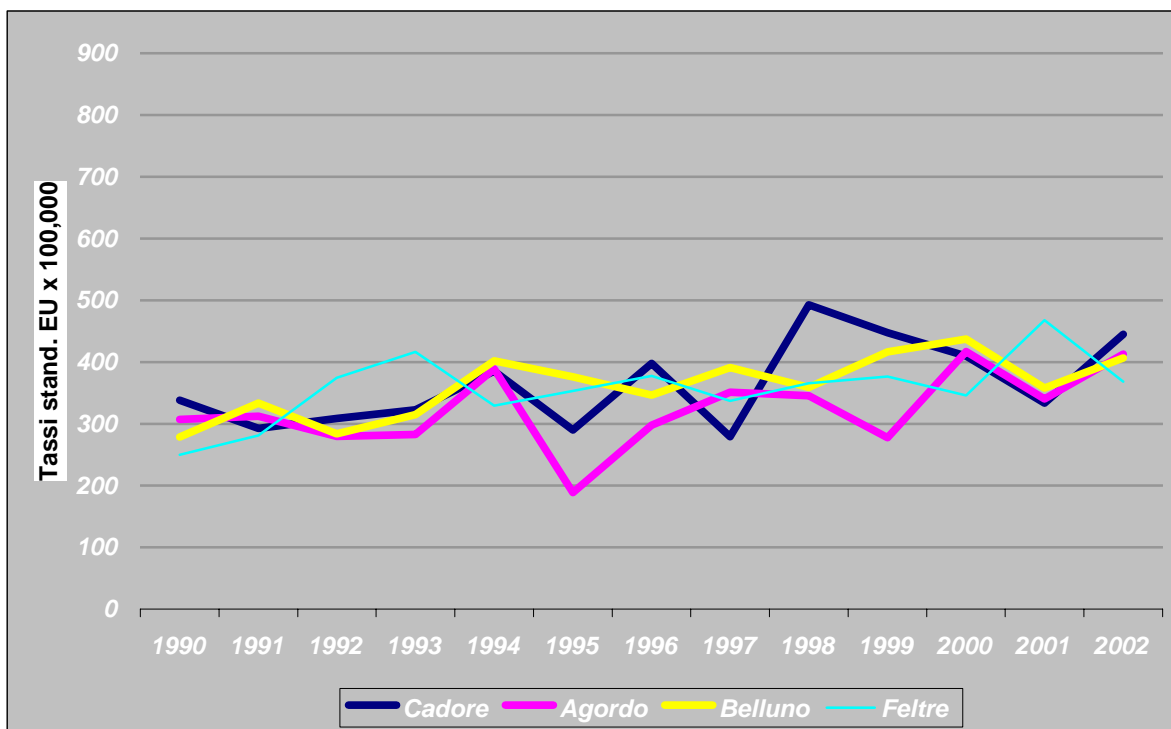
\* variazione statisticamente significativa

**Vescica - MASCHI**

Stima della variazione percentuale annua (APC) e Intervallo di confidenza al 95%

Cadore	2.78	(-1.57, 7.31)	Belluno	-1.11	(-5.23, 3.18)
Agordo	3.15	(-1.92, 8.49)	Feltre	-2.40	(-5.75, 1.07)

### Tutti i tumori eccetto pelle non melanomi - FEMMINE

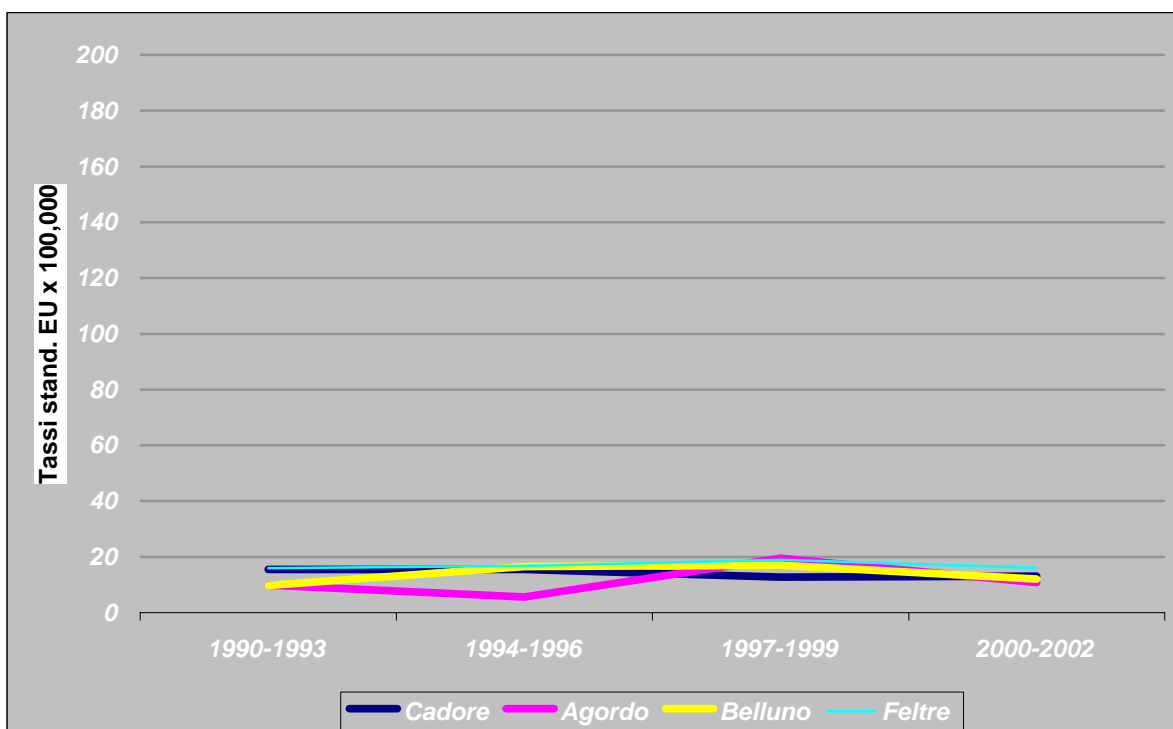


Stima della variazione percentuale annua (APC) e Intervallo di confidenza al 95%

Cadore	2.90*	( 0.22 , 5.66 )	Belluno	2.61*	( 0.96 , 4.29 )
Agordo	2.40	( -0.60 , 5.48 )	Feltre	2.25*	( 0.03 , 4.52 )

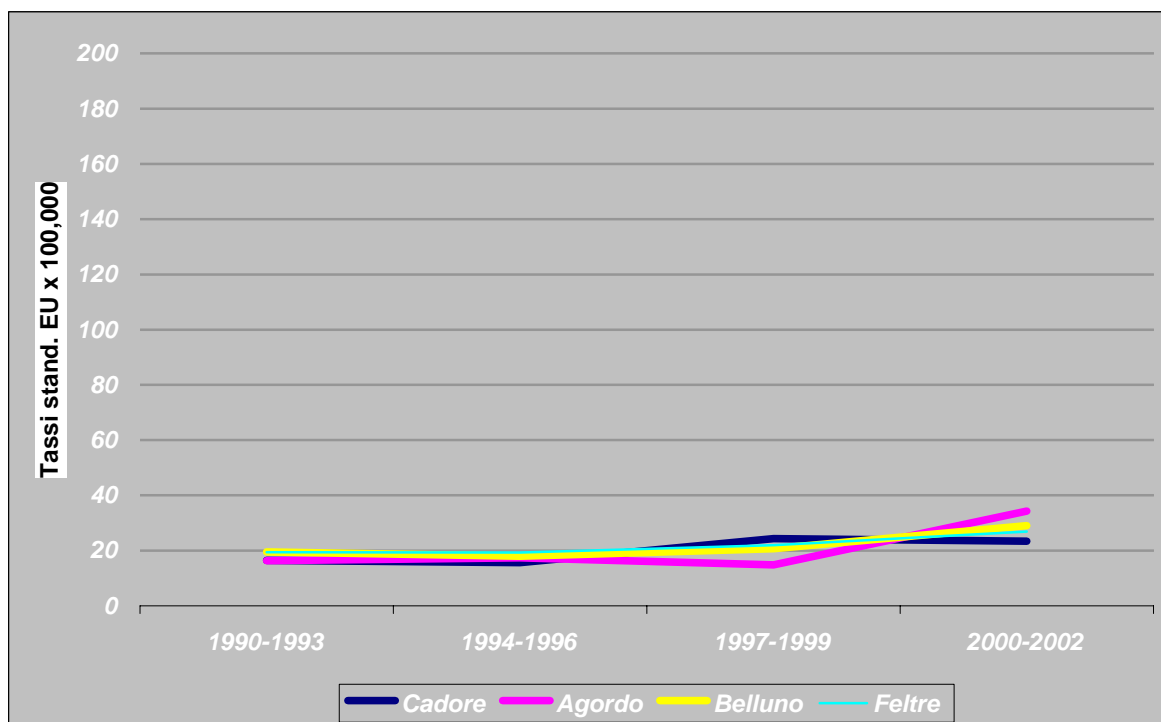
\* variazione statisticamente significativa

### Stomaco - FEMMINE



Stima della variazione percentuale annua (APC) e Intervallo di confidenza al 95%

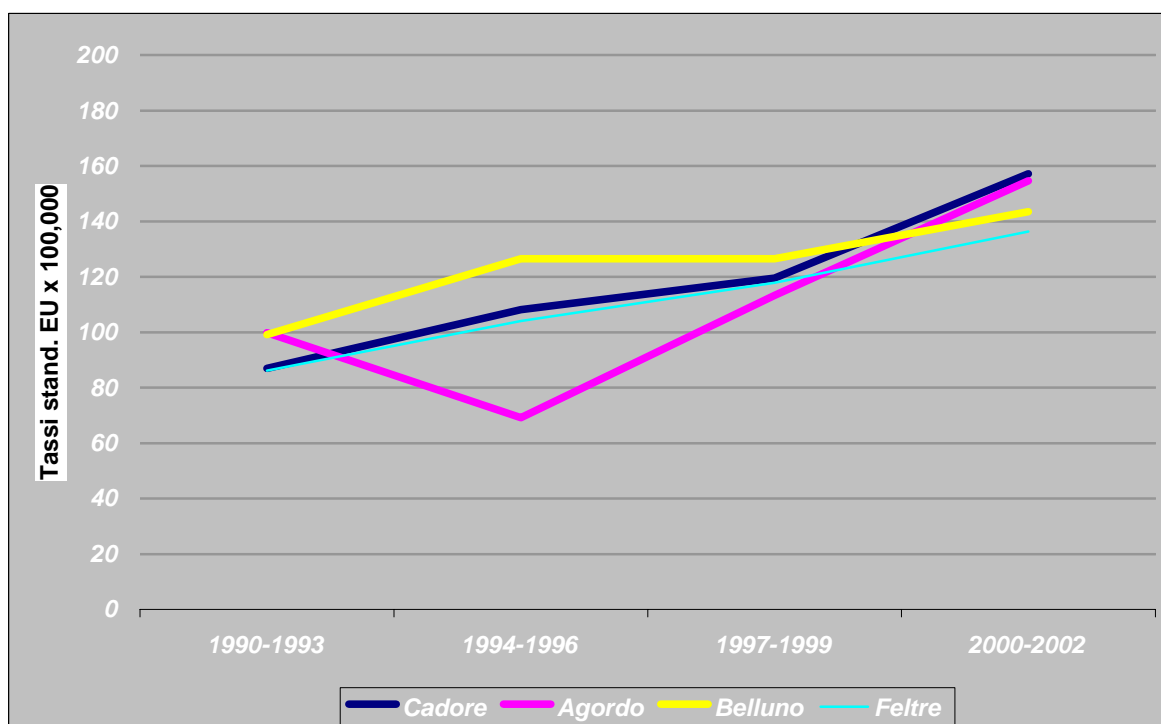
Cadore	-1.06	( -7.41 , 5.72 )	Belluno	2.77	( -4.95 , 11.13 )
Agordo	non calcolabile		Feltre	1.71	( -6.02 , 10.08 )

**Polmone - FEMMINE**

Stima della variazione percentuale annua (APC) e Intervallo di confidenza al 95%

Cadore	3.99	(-3.19 , 11.71)	Belluno	4.44*	( 1.08 , 7.91 )
Agordo	8.16	(-2.61 , 20.11)	Feltre	3.31*	( 0.09 , 6.63 )

\* variazione statisticamente significativa

**Mammella - FEMMINE**

Stima della variazione percentuale annua (APC) e Intervallo di confidenza al 95%

Cadore	6.13*	( 1.25 , 11.24 )	Belluno	3.45*	( 1.32 , 5.63 )
Agordo	4.61	(-0.46 , 9.94)	Feltre	4.95*	( 2.68 , 7.26 )

**NUMERO TOTALE DI CASI , TASSO GREZZO, TASSO STANDARDIZZATO SULLA POPOLAZIONE EUROPEA E MONDIALE, % DI VERIFICA MICROSCOPICA. PERIODO 1998-2002.**

**PROVINCIA DI BELLUNO**

Popolazione media residente di circa 210,000 abitanti

ICD-X	Maschi					Femmine					ICD-X
	Casi	Tassi per 100,000				Casi	Tassi per 100,000				
		Grezzo	Europa	Mondo	%VM		Grezzo	Europa	Mondo	%VM	
Labbro	24	4.7	3.4	2.2	100.0	9	1.6	1.0	0.7	100.0	C00
Lingua	38	7.5	6.0	4.4	97.4	10	1.8	1.2	1.0	100.0	C01-02
Bocca	74	14.6	11.8	8.4	98.6	23	4.2	2.7	2.0	91.3	C03-06
Ghiandole salivari	11	2.2	1.8	1.4	100.0	3	0.5	0.4	0.5	100.0	C07-08
Tonsille	18	3.6	2.8	2.0	100.0	7	1.3	0.9	0.7	100.0	C09
Orofaringe	11	2.2	1.9	1.3	100.0	4	0.7	0.6	0.4	100.0	C10
Rinofaringe	1	0.2	0.1	0.1	100.0	3	0.5	0.7	0.7	100.0	C11
Ipfaringe	30	5.9	4.8	3.7	96.7	2	0.4	0.3	0.2	100.0	C12-13
Faringe n.a.s.	30	5.9	4.7	3.4	96.7	7	1.3	1.2	1.0	100.0	C14
Esofago	101	20.0	15.3	10.5	96.0	27	4.9	2.6	1.7	81.5	C15
Stomaco	179	35.4	25.6	16.9	96.1	178	32.3	14.9	9.8	88.2	C16
Intestino tenue	10	2.0	1.5	1.1	90.0	10	1.8	1.1	0.8	80.0	C17
Colon	255	50.4	36.6	24.5	98.0	249	45.2	25.0	17.0	93.6	C18
Retto	181	35.8	26.1	17.6	98.9	107	19.4	10.3	7.0	96.3	C19-20
Ano	6	1.2	0.9	0.6	83.3	8	1.5	0.7	0.5	100.0	C21
Fegato	261	51.6	37.5	25.3	56.3	100	18.1	8.7	5.7	48.0	C22
Vie biliari	36	7.1	4.9	3.0	75.0	50	9.1	4.0	2.6	64.0	C23-24
Pancreas	121	23.9	17.3	11.4	41.3	143	26.0	12.0	7.8	39.2	C25
Cavità nasali	11	2.2	1.8	1.4	100.0	8	1.5	0.9	0.6	100.0	C30-31
Laringe	121	23.9	18.6	13.1	99.2	15	2.7	1.6	1.1	100.0	C32
Polmone	681	134.5	96.5	64.0	82.8	250	45.4	25.6	17.6	76.0	C33-34
Altri organi toracici	8	1.6	1.4	1.4	75.0	4	0.7	0.2	0.1	25.0	C37-38
Osso	5	1.0	0.8	0.6	100.0	8	1.5	1.5	1.6	100.0	C40-41
Pelle, melanomi	94	18.6	14.6	10.9	100.0	112	20.3	14.5	11.4	99.1	C43
Pelle, non melanomi	694	137.1	99.5	65.5	99.7	778	141.2	70.6	47.5	99.7	C44
Mesotelioma	12	2.4	1.9	1.3	91.7	6	1.1	0.7	0.5	100.0	C45
Kaposi	9	1.8	1.3	0.8	100.0	2	0.4	0.1	0.1	100.0	C46
Tessuti molli	21	4.1	3.5	3.0	95.2	16	2.9	1.9	1.4	100.0	C47, 49
Mammella	8	1.6	1.1	0.6	100.0	1037	188.2	138.1	102.4	96.3	C50
Vulva						16	2.9	1.3	0.8	100.0	C51
Vagina						5	0.9	0.4	0.2	100.0	C52
Utero collo						63	11.4	9.9	7.9	100.0	C53
Utero corpo						144	26.1	18.3	13.5	99.3	C54
Utero n.a.s.						28	5.1	3.8	2.8	85.7	C55
Ovaio						106	19.2	11.2	7.7	89.6	C56
Altri genitali femminili						18	3.3	1.7	1.2	61.1	C57
Placenta						0	0.0	0.0	0.0		C58
Pene											C60
Prostata	709	140.1	97.5	63.3	97.0						C61
Testicolo	25	4.9	4.5	4.2	100.0						C62
Altri genitali maschili	1	0.2	0.1	0.1	100.0						C63
Rene eccetto pelvi renali	119	23.5	18.2	12.9	89.1	59	10.7	7.0	5.6	81.4	C64
Pelvi renali	9	1.8	1.3	0.9	100.0	6	1.1	0.6	0.4	100.0	C65
Uretere	7	1.4	1.0	0.6	100.0	4	0.7	0.3	0.2	100.0	C66
Vescica	344	68.0	49.1	32.4	98.0	113	20.5	10.9	7.4	98.2	C67
Altri organi urinari	24	4.7	3.4	2.2	91.7	10	1.8	0.8	0.5	60.0	C68
Occhio	9	1.8	1.6	1.5	66.7	10	1.8	1.0	0.7	50.0	C69
Encefalo e altro SNC	50	9.9	8.1	6.5	56.0	59	10.7	7.4	6.3	57.6	C70-72
Tiroide	17	3.4	3.0	2.6	100.0	45	8.2	6.6	5.2	100.0	C73
Ghiandola surrenale	2	0.4	0.4	0.3	100.0	3	0.5	0.3	0.2	66.7	C74
Altre ghiandole endocrine	0	0.0	0.0	0.0		0	0.0	0.0	0.0		C75
Linfoma di Hodgkin	18	3.6	3.1	2.8	100.0	15	2.7	2.6	2.5	86.7	C81
Linfoma non Hodgkin	123	24.3	19.4	15.0	97.6	139	25.2	15.4	11.4	97.1	C82-85, 96
Mieloma multiplo	36	7.1	5.4	3.8	86.1	46	8.3	3.9	2.6	69.6	C88-90
Leucemia linfatica	42	8.3	6.7	5.4	92.9	33	6.0	4.3	4.3	84.8	C91
Leucemia mieloida	32	6.3	4.5	3.1	78.1	37	6.7	4.1	2.9	75.7	C92-94
Leucemia n.a.s.	5	1.0	0.7	0.4	40.0	9	1.6	0.6	0.4	77.8	C95
Mal definite e metastasi	100	19.8	14.0	9.1	67.0	113	20.5	8.4	5.3	51.3	C26,C39,C48,C76-80
Totale	4736	935.7	688.1	468.8	90.2	4257	772.6	465.0	334.1	88.9	C00-96
Totale escluso pelle (C44)	4042	798.5	588.7	403.3	88.6	3479	631.4	394.5	286.7	86.5	

Europa: tasso standardizzato sulla popolazione europea

Mondo: tasso standardizzato sulla popolazione mondiale

% VM: percentuale di casi con verifica microscopica

**NUMERO TOTALE DI CASI, TASSO GREZZO, TASSO STANDARDIZZATO SULLA POPOLAZIONE EUROPEA E MONDIALE, % DI VERIFICA MICROSCOPICA. PERIODO 1998-2002.**

**Ex ULSS 1 Cadore**

Popolazione media residente di circa 39,000 abitanti

ICD-X	Maschi					Femmine					ICD-X
	Casi	Tassi per 100,000				Casi	Tassi per 100,000				
	Grezzo	Europa	Mondo	%VM	Grezzo	Europa	Mondo	%VM			
Labbro	0	0.0	0.0	0.0		2	1.9	1.6	1.1	100.0	C00
Lingua	9	9.6	8.0	5.9	100.0	1	1.0	0.2	0.1	100.0	C01-02
Bocca	21	22.4	18.2	13.2	95.2	4	3.9	2.5	1.9	75.0	C03-06
Ghiandole salivari	1	1.1	1.0	0.9	100.0	0	0.0	0.0	0.0		C07-08
Tonsille	1	1.1	1.0	0.7	100.0	1	1.0	1.1	0.9	100.0	C09
Orofaringe	2	2.1	1.9	1.5	100.0	0	0.0	0.0	0.0		C10
Rinofaringe	0	0.0	0.0	0.0		1	1.0	1.1	0.9	100.0	C11
Ipfaringe	4	4.3	3.3	2.6	100.0	0	0.0	0.0	0.0		C12-13
Faringe n.a.s.	8	8.5	7.4	5.8	100.0	2	1.9	1.6	1.2	100.0	C14
Esofago	23	24.5	19.1	13.0	95.7	7	6.8	3.3	2.0	71.4	C15
Stomaco	26	27.7	20.5	13.8	92.3	33	31.9	14.7	9.9	90.9	C16
Intestino tenue	2	2.1	1.7	1.3	100.0	3	2.9	2.5	1.8	100.0	C17
Colon	51	54.3	39.9	26.5	92.2	52	50.3	27.3	17.8	86.5	C18
Retto	35	37.3	28.6	19.3	100.0	17	16.5	8.7	5.8	94.1	C19-20
Ano	0	0.0	0.0	0.0		0	0.0	0.0	0.0		C21
Fegato	58	61.8	46.4	30.4	56.9	20	19.4	8.2	5.0	45.0	C22
Vie biliari	5	5.3	3.6	2.0	60.0	12	11.6	5.1	3.4	50.0	C23-24
Pancreas	20	21.3	16.1	10.2	45.0	28	27.1	14.2	9.7	32.1	C25
Cavità nasali	2	2.1	1.4	0.8	100.0	0	0.0	0.0	0.0		C30-31
Laringe	17	18.1	15.2	11.1	100.0	3	2.9	1.5	1.0	100.0	C32
Polmone	116	123.6	91.4	59.4	79.3	52	50.3	26.5	18.0	65.4	C33-34
Altri organi toracici	0	0.0	0.0	0.0		1	1.0	0.3	0.1	0.0	C37-38
Osso	1	1.1	0.9	0.7	100.0	2	1.9	2.2	2.3	100.0	C40-41
Pelle, melanomi	14	14.9	11.8	8.3	100.0	20	19.4	14.4	11.8	100.0	C43
Pelle, non melanomi	106	112.9	85.2	55.2	100.0	105	101.7	55.7	38.1	100.0	C44
Mesotelioma	2	2.1	1.5	1.0	50.0	0	0.0	0.0	0.0		C45
Kaposi	6	6.4	4.9	3.0	100.0	1	1.0	0.3	0.1	100.0	C46
Tessuti molli	3	3.2	2.7	1.8	100.0	4	3.9	2.9	2.5	100.0	C47, 49
Mammella	1	1.1	0.7	0.3	100.0	200	193.6	152.4	114.8	94.5	C50
Vulva						1	1.0	0.5	0.3	100.0	C51
Vagina						1	1.0	1.0	0.7	100.0	C52
Utero collo						13	12.6	11.0	8.7	100.0	C53
Utero corpo						30	29.0	22.5	17.7	100.0	C54
Utero n.a.s.						4	3.9	1.9	1.3	75.0	C55
Ovaio						21	20.3	10.4	6.7	90.5	C56
Altri genitali femminili						4	3.9	1.1	0.5	25.0	C57
Placenta						0	0.0	0.0	0.0		C58
Pene											C60
Prostata	107	114.0	83.2	53.7	97.2						C61
Testicolo	1	1.1	0.9	0.6	100.0						C62
Altri genitali maschili	0	0.0	0.0	0.0							C63
Rene eccetto pelvi renali	17	18.1	14.1	10.2	88.2	10	9.7	5.6	3.8	60.0	C64
Pelvi renali	0	0.0	0.0	0.0		3	2.9	1.8	1.3	100.0	C65
Uretere	0	0.0	0.0	0.0		0	0.0	0.0	0.0		C66
Vescica	79	84.2	63.7	42.9	98.7	25	24.2	12.9	8.8	96.0	C67
Altri organi urinari	3	3.2	2.1	1.0	100.0	1	1.0	0.3	0.1	0.0	C68
Occhio	1	1.1	0.7	0.3	100.0	4	3.9	1.2	0.6	50.0	C69
Encefalo e altro SNC	8	8.5	7.8	6.8	50.0	12	11.6	8.9	8.1	75.0	C70-72
Tiroide	5	5.3	4.3	3.3	100.0	14	13.6	11.5	8.9	100.0	C73
Ghiandola surrenale	0	0.0	0.0	0.0		0	0.0	0.0	0.0		C74
Altre ghiandole endocrine	0	0.0	0.0	0.0		0	0.0	0.0	0.0		C75
Linfoma di Hodgkin	3	3.2	2.9	2.4	100.0	3	2.9	2.9	2.5	66.7	C81
Linfoma non Hodgkin	19	20.2	16.6	13.1	94.7	30	29.0	17.0	12.5	96.7	C82-85, 96
Mieloma multiplo	9	9.6	7.1	4.6	77.8	8	7.7	2.8	1.6	62.5	C88-90
Leucemia linfatica	6	6.4	4.8	3.0	100.0	7	6.8	4.9	5.0	100.0	C91
Leucemia mieloide	3	3.2	2.6	2.1	100.0	8	7.7	5.3	4.0	75.0	C92-94
Leucemia n.a.s.	2	2.1	1.5	0.9	50.0	1	1.0	0.5	0.3	100.0	C95
Mal definite e metastasi	16	17.0	12.2	7.8	56.3	20	19.4	8.4	5.2	50.0	C26,C39,C48,C76-80
Totale	815	868.1	658.5	442.8	88.7	791	765.8	481.1	349.1	85.6	C00-96
Totale escluso pelle (C44)	709	755.2	573.4	387.7	87.0	686	664.1	425.4	310.9	83.4	

Europa: tasso standardizzato sulla popolazione europea

Mondo: tasso standardizzato sulla popolazione mondiale

% VM: percentuale di casi con verifica microscopica

**NUMERO TOTALE DI CASI, TASSO GREZZO, TASSO STANDARDIZZATO SULLA POPOLAZIONE EUROPEA E MONDIALE, % DI VERIFICA MICROSCOPICA. PERIODO 1998-2002.**

**Ex ULSS 2 Montana Agordina**

Popolazione media residente di circa 22,000 abitanti

ICD-X	Maschi					Femmine					ICD-X
	Casi	Grezzo	Europa	Mondo	%VM	Casi	Grezzo	Europa	Mondo	%VM	
Labbro	5	9.7	6.5	4.0	100.0	2	3.5	1.1	0.6	100.0	C00
Lingua	3	5.8	4.6	3.0	100.0	1	1.8	0.8	0.6	100.0	C01-02
Bocca	6	11.7	10.0	7.4	100.0	3	5.3	2.2	1.6	66.7	C03-06
Ghiandole salivari	0	0.0	0.0	0.0		0	0.0	0.0	0.0		C07-08
Tonsille	4	7.8	6.1	4.2	100.0	0	0.0	0.0	0.0		C09
Orofaringe	0	0.0	0.0	0.0		1	1.8	0.6	0.3	100.0	C10
Rinofaringe	0	0.0	0.0	0.0		0	0.0	0.0	0.0		C11
Ipfaringe	3	5.8	5.4	4.5	66.7	0	0.0	0.0	0.0		C12-13
Faringe n.a.s.	5	9.7	7.0	4.6	80.0	1	1.8	1.5	1.2	100.0	C14
Esofago	9	17.5	13.2	9.7	100.0	1	1.8	0.4	0.2	100.0	C15
Stomaco	17	33.0	24.3	16.7	94.1	17	29.8	15.6	10.9	100.0	C16
Intestino tenue	1	1.9	1.7	1.3	100.0	2	3.5	2.3	1.7	50.0	C17
Colon	23	44.7	32.6	21.9	100.0	20	35.1	14.8	9.4	90.0	C18
Retto	14	27.2	19.5	13.6	100.0	8	14.0	4.6	2.7	87.5	C19-20
Ano	1	1.9	1.0	0.5	100.0	3	5.3	1.6	1.0	100.0	C21
Fegato	35	68.0	47.3	32.2	60.0	20	35.1	16.6	10.9	50.0	C22
Vie biliari	4	7.8	5.4	3.8	100.0	3	5.3	1.4	0.7	33.3	C23-24
Pancreas	15	29.1	21.5	14.4	60.0	15	26.3	10.6	6.9	26.7	C25
Cavità nasali	2	3.9	2.4	1.4	100.0	0	0.0	0.0	0.0		C30-31
Laringe	13	25.2	18.6	12.3	100.0	0	0.0	0.0	0.0		C32
Polmone	64	124.3	89.4	61.0	84.4	24	42.1	28.0	19.6	83.3	C33-34
Altri organi toracici	0	0.0	0.0	0.0		0	0.0	0.0	0.0		C37-38
Osso	1	1.9	1.5	1.1	100.0	1	1.8	1.7	1.4	100.0	C40-41
Pelle, melanomi	11	21.4	16.3	11.7	100.0	5	8.8	3.7	2.6	100.0	C43
Pelle, non melanomi	73	141.8	98.8	66.4	98.6	89	156.0	74.0	50.1	98.9	C44
Mesotelioma	0	0.0	0.0	0.0		0	0.0	0.0	0.0		C45
Kaposi	0	0.0	0.0	0.0		0	0.0	0.0	0.0		C46
Tessuti molli	1	1.9	1.9	2.2	100.0	1	1.8	0.8	0.6	100.0	C47, 49
Mammella	0	0.0	0.0	0.0		104	182.3	133.5	99.9	98.1	C50
Vulva						2	3.5	1.7	1.2	100.0	C51
Vagina						1	1.8	0.4	0.2	100.0	C52
Utero collo						5	8.8	6.7	4.8	100.0	C53
Utero corpo						21	36.8	28.3	20.4	100.0	C54
Utero n.a.s.						1	1.8	1.5	1.2	100.0	C55
Ovaio						14	24.5	10.5	6.9	78.6	C56
Altri genitali femminili						1	1.8	0.4	0.2	0.0	C57
Placenta						0	0.0	0.0	0.0		C58
Pene	1	1.9	1.9	1.6	100.0						C60
Prostata	64	124.3	79.8	50.9	89.1						C61
Testicolo	4	7.8	7.6	6.8	100.0						C62
Altri genitali maschili	0	0.0	0.0	0.0							C63
Rene eccetto pelvi renali	8	15.5	12.4	8.6	100.0	6	10.5	6.4	4.2	100.0	C64
Pelvi renali	2	3.9	2.3	1.3	100.0	0	0.0	0.0	0.0		C65
Uretere	0	0.0	0.0	0.0		1	1.8	0.4	0.2	100.0	C66
Vescica	49	95.1	62.8	40.4	95.9	11	19.3	7.5	4.5	100.0	C67
Altri organi urinari	0	0.0	0.0	0.0		1	1.8	1.7	1.5	100.0	C68
Occhio	1	1.9	1.7	1.2	0.0	2	3.5	2.4	1.9	50.0	C69
Encefalo e altro SNC	10	19.4	14.5	10.6	80.0	10	17.5	10.3	7.7	60.0	C70-72
Tiroide	1	1.9	1.0	0.5	100.0	5	8.8	6.4	4.3	100.0	C73
Ghiandola surrenale	0	0.0	0.0	0.0		0	0.0	0.0	0.0		C74
Altre ghiandole endocrine	0	0.0	0.0	0.0		0	0.0	0.0	0.0		C75
Linfoma di Hodgkin	1	1.9	1.7	1.4	100.0	1	1.8	2.0	1.7	100.0	C81
Linfoma non Hodgkin	12	23.3	16.2	11.1	100.0	8	14.0	7.1	4.9	100.0	C82-85, 96
Mieloma multiplo	3	5.8	4.2	2.9	100.0	4	7.0	5.0	3.5	50.0	C88-90
Leucemia linfatica	3	5.8	3.5	2.1	66.7	4	7.0	6.7	7.0	50.0	C91
Leucemia mieloidi	3	5.8	4.4	3.8	100.0	2	3.5	1.7	1.1	50.0	C92-94
Leucemia n.a.s.	0	0.0	0.0	0.0		1	1.8	2.1	1.8	100.0	C95
Mal definite e metastasi	12	23.3	15.5	10.0	66.7	12	21.0	7.2	4.4	50.0	C26,C39,C48,C76-80
Totale	484	939.8	664.5	451.4	89.5	434	760.8	432.4	306.4	87.3	C00-96
Totale escluso pelle (C44)	411	798.1	565.7	385.0	87.8	345	604.8	358.4	256.3	84.3	

Europa: tasso standardizzato sulla popolazione europea

Mondo: tasso standardizzato sulla popolazione mondiale

% VM: percentuale di casi con verifica microscopica



**NUMERO TOTALE DI CASI , TASSO GREZZO, TASSO STANDARDIZZATO SULLA POPOLAZIONE EUROPEA E MONDIALE, % DI VERIFICA MICROSCOPICA. PERIODO 1998-2002.**

**Ex ULSS 3 Belluno-Alpago-Zoldano**

Popolazione media residente di circa 95,000 abitanti

ICD-X	Maschi					Femmine					ICD-X
	Casi	Grezzo	Europa	Mondo	%VM	Casi	Grezzo	Europa	Mondo	%VM	
Labbro	12	5.3	3.9	2.5	100.0	4	1.6	1.2	0.9	100.0	C00
Lingua	14	6.2	4.9	3.6	92.9	5	2.0	1.6	1.3	100.0	C01-02
Bocca	26	11.5	9.2	6.5	100.0	14	5.7	3.8	2.8	100.0	C03-06
Ghiandole salivari	8	3.5	2.9	2.2	100.0	1	0.4	0.1	0.1	100.0	C07-08
Tonsille	6	2.7	2.2	1.6	100.0	4	1.6	1.2	0.8	100.0	C09
Orofaringe	4	1.8	1.5	1.0	100.0	2	0.8	0.8	0.5	100.0	C10
Rinofaringe	1	0.4	0.3	0.2	100.0	2	0.8	1.0	1.3	100.0	C11
Ipfaringe	11	4.9	3.8	2.9	100.0	2	0.8	0.6	0.4	100.0	C12-13
Faringe n.a.s.	13	5.7	4.5	3.2	100.0	3	1.2	1.2	1.1	100.0	C14
Esofago	37	16.3	12.2	8.1	94.6	11	4.5	2.0	1.2	81.8	C15
Stomaco	76	33.6	24.3	15.7	94.7	74	30.1	13.1	8.1	91.9	C16
Intestino tenue	3	1.3	1.0	0.7	100.0	4	1.6	0.8	0.5	75.0	C17
Colon	104	45.9	34.2	23.1	99.0	114	46.3	26.9	18.8	93.9	C18
Retto	60	26.5	19.4	12.9	96.7	48	19.5	10.9	7.4	97.9	C19-20
Ano	2	0.9	0.7	0.5	50.0	4	1.6	0.7	0.5	100.0	C21
Fegato	105	46.4	34.5	23.3	59.0	40	16.2	8.5	5.7	55.0	C22
Vie biliari	19	8.4	5.9	3.5	73.7	25	10.2	4.8	3.0	68.0	C23-24
Pancreas	54	23.9	17.6	11.4	37.0	67	27.2	12.7	8.2	44.8	C25
Cavità nasali	1	0.4	0.3	0.2	100.0	3	1.2	0.6	0.4	100.0	C30-31
Laringe	56	24.7	19.3	13.5	100.0	5	2.0	1.3	0.9	100.0	C32
Polmone	315	139.2	99.5	64.8	81.9	109	44.3	25.7	17.7	78.0	C33-34
Altri organi toracici	5	2.2	1.8	1.6	80.0	0	0.0	0.0	0.0		C37-38
Osso	2	0.9	0.7	0.5	100.0	1	0.4	0.1	0.1	100.0	C40-41
Pelle, melanomi	43	19.0	15.6	12.2	100.0	55	22.3	16.2	12.7	98.2	C43
Pelle, non melanomi	319	140.9	102.8	67.4	100.0	383	155.6	78.8	52.9	100.0	C44
Mesotelioma	4	1.8	1.6	1.2	100.0	4	1.6	1.1	0.7	100.0	C45
Kaposi	3	1.3	1.0	0.7	100.0	1	0.4	0.2	0.1	100.0	C46
Tessuti molli	12	5.3	4.6	4.0	100.0	5	2.0	1.7	1.2	100.0	C47, 49
Mammella	6	2.7	1.9	1.2	100.0	467	189.7	136.4	100.5	96.8	C50
Vulva						7	2.8	1.3	0.8	100.0	C51
Vagina						3	1.2	0.3	0.2	100.0	C52
Utero collo						30	12.2	10.5	8.5	100.0	C53
Utero corpo						62	25.2	17.3	12.6	98.4	C54
Utero n.a.s.						21	8.5	6.8	5.1	85.7	C55
Ovaio						44	17.9	11.4	7.9	95.5	C56
Altri genitali femminili						5	2.0	1.0	0.7	40.0	C57
Placenta						0	0.0	0.0	0.0		C58
Pene											C60
Prostata	309	136.5	96.6	62.8	98.1						C61
Testicolo	13	5.7	5.1	4.8	100.0						C62
Altri genitali maschili	0	0.0	0.0	0.0							C63
Rene eccetto pelvi renali	67	29.6	22.9	16.1	89.6	30	12.2	8.5	7.5	86.7	C64
Pelvi renali	6	2.7	2.0	1.5	100.0	1	0.4	0.1	0.1	100.0	C65
Uretere	2	0.9	0.7	0.4	100.0	1	0.4	0.1	0.1	100.0	C66
Vescica	137	60.5	44.4	29.1	98.5	39	15.8	8.5	5.8	100.0	C67
Altri organi urinari	13	5.7	4.1	2.7	92.3	4	1.6	0.7	0.5	100.0	C68
Occhio	5	2.2	2.2	2.3	100.0	4	1.6	1.2	0.8	50.0	C69
Encefalo e altro SNC	15	6.6	5.8	5.2	60.0	27	11.0	7.8	6.4	55.6	C70-72
Tiroide	7	3.1	2.8	2.5	100.0	16	6.5	5.2	4.2	100.0	C73
Ghiandola surrenale	0	0.0	0.0	0.0		2	0.8	0.5	0.3	50.0	C74
Altre ghiandole endocrine	0	0.0	0.0	0.0		0	0.0	0.0	0.0		C75
Linfoma di Hodgkin	10	4.4	3.7	3.2	100.0	7	2.8	2.4	2.1	85.7	C81
Linfoma non Hodgkin	63	27.8	23.3	18.5	100.0	63	25.6	15.9	11.8	96.8	C82-85, 96
Mieloma multiplo	17	7.5	5.8	4.2	82.4	19	7.7	3.2	2.0	63.2	C88-90
Leucemia linfatica	24	10.6	8.5	6.8	91.7	9	3.7	2.9	3.2	88.9	C91
Leucemia mieloidi	16	7.1	5.0	3.2	75.0	19	7.7	5.0	3.6	89.5	C92-94
Leucemia n.a.s.	2	0.9	0.6	0.5	50.0	5	2.0	0.5	0.3	60.0	C95
Mal definite e metastasi	39	17.2	12.8	8.3	66.7	51	20.7	9.2	5.9	49.0	C26,C39,C48,C76-80
Totale	2073	915.8	680.6	463.2	90.5	1926	782.4	474.6	340.3	90.2	C00-96
Totale escluso pelle (C44)	1754	774.9	577.8	395.7	88.8	1543	626.8	395.8	287.4	87.8	

Europa: tasso standardizzato sulla popolazione europea

Mondo: tasso standardizzato sulla popolazione mondiale

% VM: percentuale di casi con verifica microscopica

**NUMERO TOTALE DI CASI , TASSO GREZZO, TASSO STANDARDIZZATO SULLA POPOLAZIONE EUROPEA E MONDIALE, % DI VERIFICA MICROSCOPICA. PERIODO 1998-2002.**

**Ex ULSS 4 Montana Feltrina**

Popolazione media residente di circa 56,000 abitanti

ICD-X	Maschi					Femmine					ICD-X
	Casi	Grezzo	Europa	Mondo	%VM	Casi	Grezzo	Europa	Mondo	%VM	
Labbro	7	5.2	3.5	2.3	100.0	1	0.7	0.1	0.1	100.0	C00
Lingua	12	8.9	7.2	5.3	100.0	3	2.1	1.4	1.1	100.0	C01-02
Bocca	21	15.6	12.2	8.6	100.0	2	1.4	1.0	0.7	100.0	C03-06
Ghiandole salivari	2	1.5	1.2	0.9	100.0	2	1.4	1.5	1.7	100.0	C07-08
Tonsille	7	5.2	3.6	2.5	100.0	2	1.4	0.8	0.6	100.0	C09
Orofaringe	5	3.7	3.3	2.3	100.0	1	0.7	0.5	0.3	100.0	C10
Rinofaringe	0	0.0	0.0	0.0		0	0.0	0.0	0.0		C11
Ipfaringe	12	8.9	7.2	5.3	100.0	0	0.0	0.0	0.0		C12-13
Faringe n.a.s.	4	3.0	2.1	1.5	100.0	1	0.7	0.6	0.4	100.0	C14
Esofago	32	23.8	18.7	13.2	96.9	8	5.5	3.9	2.9	87.5	C15
Stomaco	60	44.6	31.8	21.2	100.0	54	37.4	18.2	12.2	77.8	C16
Intestino tenue	4	3.0	2.2	1.5	75.0	1	0.7	0.2	0.1	100.0	C17
Colon	77	57.3	40.1	26.4	100.0	63	43.6	23.9	16.5	100.0	C18
Retto	72	53.6	38.2	25.9	100.0	34	23.5	12.8	9.0	97.1	C19-20
Ano	3	2.2	1.8	1.2	100.0	1	0.7	0.7	0.6	100.0	C21
Fegato	63	46.9	33.2	23.0	49.2	20	13.8	6.0	3.9	35.0	C22
Vie biliari	8	6.0	4.3	2.8	75.0	10	6.9	2.9	1.9	80.0	C23-24
Pancreas	32	23.8	16.5	11.0	37.5	33	22.8	9.7	6.3	39.4	C25
Cavità nasali	6	4.5	4.4	4.0	100.0	5	3.5	2.4	1.7	100.0	C30-31
Laringe	35	26.0	19.4	13.7	97.1	7	4.8	2.8	1.8	100.0	C32
Polmone	186	138.4	99.0	67.8	86.0	65	45.0	24.1	16.5	78.5	C33-34
Altri organi toracici	3	2.2	2.3	2.6	66.7	3	2.1	0.6	0.3	33.3	C37-38
Osso	1	0.7	0.6	0.5	100.0	4	2.8	3.4	4.0	100.0	C40-41
Pelle, melanomi	26	19.3	14.0	10.1	100.0	32	22.1	16.0	12.2	100.0	C43
Pelle, non melanomi	196	145.8	104.3	69.2	99.5	201	139.1	66.3	44.1	99.5	C44
Mesotelioma	6	4.5	3.2	2.2	100.0	2	1.4	0.9	0.7	100.0	C45
Kaposi	0	0.0	0.0	0.0		0	0.0	0.0	0.0		C46
Tessuti molli	5	3.7	3.1	2.4	80.0	6	4.2	2.1	1.4	100.0	C47, 49
Mammella	1	0.7	0.4	0.2	100.0	266	184.1	132.7	97.7	96.2	C50
Vulva						6	4.2	1.8	1.1	100.0	C51
Vagina						0	0.0	0.0	0.0		C52
Utero collo						15	10.4	9.2	7.4	100.0	C53
Utero corpo						31	21.5	13.1	9.3	100.0	C54
Utero n.a.s.						2	1.4	1.1	0.8	100.0	C55
Ovaio						27	18.7	11.9	8.5	85.2	C56
Altri genitali femminili						8	5.5	3.7	2.9	100.0	C57
Placenta						0	0.0	0.0	0.0		C58
Pene	3	2.2	2.0	1.4	100.0						C60
Prostata	229	170.3	114.9	75.1	97.8						C61
Testicolo	7	5.2	4.9	4.8	100.0						C62
Altri genitali maschili	1	0.7	0.4	0.2	100.0						C63
Rene eccetto pelvi renali	27	20.1	15.5	11.0	85.2	13	9.0	6.0	4.3	76.9	C64
Pelvi renali	1	0.7	0.5	0.3	100.0	2	1.4	0.8	0.5	100.0	C65
Uretere	5	3.7	2.3	1.5	100.0	2	1.4	0.7	0.4	100.0	C66
Vescica	79	58.8	41.5	27.6	97.5	38	26.3	15.0	10.3	97.4	C67
Altri organi urinari	8	6.0	4.5	3.0	87.5	4	2.8	0.8	0.5	25.0	C68
Occhio	2	1.5	1.3	1.1	0.0	0	0.0	0.0	0.0		C69
Encefalo e altro SNC	17	12.6	9.5	6.9	41.2	10	6.9	4.4	4.0	40.0	C70-72
Tiroide	4	3.0	3.1	3.3	100.0	10	6.9	5.6	4.5	100.0	C73
Ghiandola surrenale	2	1.5	1.4	1.2	100.0	1	0.7	0.5	0.3	100.0	C74
Altre ghiandole endocrine	0	0.0	0.0	0.0		0	0.0	0.0	0.0		C75
Linfoma di Hodgkin	4	3.0	3.0	2.9	100.0	4	2.8	3.0	3.5	100.0	C81
Linfoma non Hodgkin	29	21.6	16.0	11.7	93.1	38	26.3	16.6	12.3	97.4	C82-85, 96
Mieloma multiplo	7	5.2	4.2	3.0	100.0	15	10.4	5.7	3.9	86.7	C88-90
Leucemia linfatica	9	6.7	6.4	6.1	100.0	13	9.0	5.2	4.4	84.6	C91
Leucemia mieloida	10	7.4	5.1	3.2	70.0	8	5.5	2.6	1.7	50.0	C92-94
Leucemia n.a.s.	1	0.7	0.4	0.2	0.0	2	1.4	0.4	0.2	100.0	C95
Mal definite e metastasi	33	24.5	16.8	10.8	72.7	30	20.8	7.6	4.6	56.7	C26,C39,C48,C76-80
Totale	1364	1,014.6	731.5	503.1	90.8	1106	765.5	450.8	324.1	89.6	C00-96
Totale escluso pelle (C44)	1168	868.8	627.2	433.9	89.4	905	626.4	384.5	280.0	87.4	

Europa: tasso standardizzato sulla popolazione europea

Mondo: tasso standardizzato sulla popolazione mondiale

% VM: percentuale di casi con verifica microscopica

## NUMERO DI CASI INCIDENTI PER SESSO, SEDE E CLASSI DI ETÀ QUINQUENNALI

## PROVINCIA DI BELLUNO. PERIODO 1998-2002.

## MASCHI

Sede	0-4	5-9	10-14	15-19	20-24	25-29	30-34	35-39	40-44	45-49	50-54	55-59	60-64	65-69	70-74	75-79	80-84	85+	Totale
Labbro	0	0	0	0	0	0	0	1	0	0	1	3	2	2	6	5	2	2	24
Lingua	0	0	0	0	0	0	1	0	2	6	3	4	7	4	4	4	1	2	38
Bocca	0	0	0	0	0	0	1	0	4	1	13	13	19	5	7	6	3	2	74
Ghiandole salivari	0	0	0	0	0	1	1	0	1	1	1	2	0	2	0	1	0	1	11
Tonsille	0	0	0	0	0	0	0	0	1	1	2	3	1	4	3	2	0	1	18
Orofaringe	0	0	0	0	0	0	0	0	0	1	2	5	1	1	1	0	0	0	11
Rinofaringe	0	0	0	0	0	0	0	0	0	0	0	0	0	0	1	0	0	0	1
Ipfaringe	0	0	0	0	0	0	0	1	2	3	2	1	10	6	3	0	2	0	30
Faringe n.a.s.	0	0	0	0	0	0	0	0	0	3	2	6	6	5	5	3	0	0	30
Esofago	0	0	0	0	0	0	0	0	2	0	11	13	23	15	11	15	4	7	101
Stomaco	0	0	0	0	0	0	1	4	2	5	6	15	24	20	36	34	14	18	179
Intestino tenue	0	0	0	0	0	0	0	1	0	0	1	1	2	2	2	1	0	0	10
Colon	0	0	0	0	0	0	2	1	4	5	16	24	36	32	50	49	25	11	255
Retto	0	0	0	0	0	1	0	1	3	3	11	15	20	37	33	32	15	10	181
Ano	0	0	0	0	0	0	0	0	0	1	1	0	0	1	0	1	1	1	6
Fegato	0	0	0	0	0	0	0	0	1	7	12	21	37	45	66	42	16	14	261
Vie biliari	0	0	0	0	0	0	0	0	0	1	2	1	1	5	7	9	4	6	36
Pancreas	0	0	0	0	0	0	0	0	0	3	9	13	15	15	21	24	14	7	121
Cavità nasali	1	0	0	0	0	0	0	0	0	0	0	2	1	0	3	1	0	3	11
Laringe	0	0	0	0	0	0	0	0	5	6	15	18	20	14	19	16	7	1	121
Polmone	0	0	0	0	0	0	0	3	2	11	32	51	99	105	147	134	62	35	681
Altri organi toracici	1	0	0	0	0	2	1	0	0	0	0	0	0	0	2	1	0	1	8
Osso	0	0	0	0	0	0	0	1	0	1	0	0	0	2	0	1	0	0	5
Pelle, melanomi	0	0	0	0	1	4	2	6	5	6	7	9	5	18	16	11	2	2	94
Pelle, non melanomi	0	0	0	1	0	1	7	8	18	21	35	65	69	80	105	141	85	58	694
Mesotelioma	0	0	0	0	0	0	0	0	1	2	0	2	1	2	1	1	1	1	12
Kaposi	0	0	0	0	0	0	0	0	0	1	0	2	0	1	1	1	2	1	9
Tessuti molli	0	0	0	1	0	2	0	0	1	3	2	1	6	0	3	1	0	1	21
Mammella	0	0	0	0	0	0	0	0	0	0	1	1	1	0	1	3	1	1	8
Pene	0	0	0	0	0	0	0	0	0	1	2	1	2	0	2	3	1	1	13
Prostata	0	0	0	0	0	0	0	0	0	0	9	32	95	136	161	154	72	50	709
Testicolo	0	0	0	0	3	5	5	3	3	2	1	3	0	0	0	0	0	0	25
Altri genitali maschili	0	0	0	0	0	0	0	0	0	0	0	0	0	0	0	0	1	0	1
Rene eccetto pelvi renali	0	0	0	0	0	0	2	0	1	7	11	13	17	29	17	12	5	5	119
Pelvi renali	0	0	0	0	0	0	0	0	1	0	0	0	2	1	3	2	0	0	9
Uretere	0	0	0	0	0	0	0	0	0	0	1	0	1	0	3	2	0	0	7
Vescica	0	0	0	0	0	0	1	2	5	8	10	30	36	55	79	59	25	34	344
Altri organi urinari	0	0	0	0	0	0	0	0	0	1	1	1	6	1	1	7	3	3	24
Occhio	1	0	0	0	0	0	0	1	1	0	0	2	2	0	1	1	0	0	9
Encefalo e altro SNC	1	0	1	1	0	2	1	1	2	2	1	8	6	7	8	4	5	0	50
Tiroide	0	0	0	1	2	1	1	1	1	1	1	1	2	2	1	1	1	0	17
Ghiandola surrenale	0	0	0	0	0	0	0	0	0	2	0	0	0	0	0	0	0	0	2
Altre ghiandole endocrine	0	0	0	0	0	0	0	0	0	0	0	0	0	0	0	0	0	0	0
Linfoma di Hodgkin	0	0	1	0	0	2	3	3	2	2	1	0	1	1	1	0	1	0	18
Linfoma non Hodgkin	2	1	0	1	2	2	6	3	5	6	5	13	16	12	19	13	9	8	123
Mieloma multiplo	0	0	0	0	0	0	0	0	1	3	3	2	5	6	9	4	1	2	36
Leucemia linfatica	1	1	1	1	0	0	0	0	1	2	1	2	3	10	5	6	6	2	42
Leucemia mieloide	0	0	0	0	0	2	0	0	0	0	3	0	3	6	4	4	7	3	32
Leucemia n.a.s.	0	0	0	0	0	0	0	0	0	0	0	0	0	1	2	0	1	1	5
Mai definite e metastasi	0	0	0	0	1	0	0	1	1	1	3	8	11	11	18	16	18	11	100
Totale	7	2	3	6	9	25	35	42	78	130	238	408	613	702	888	827	417	306	4736
Totale escluso pelle (C44)	7	2	3	5	9	24	28	34	60	109	203	343	544	622	783	686	332	248	4042

## NUMERO DI CASI INCIDENTI PER SESSO, SEDE E CLASSI DI ETÀ QUINQUENNALI

## PROVINCIA DI BELLUNO. PERIODO 1998-2002.

## FEMMINE

Sede	0-4	5-9	10-14	15-19	20-24	25-29	30-34	35-39	40-44	45-49	50-54	55-59	60-64	65-69	70-74	75-79	80-84	85+	Totale
Labbro	0	0	0	0	0	0	0	0	0	0	1	2	1	1	0	2	0	2	9
Lingua	0	0	0	0	0	1	0	1	1	0	0	1	1	1	1	1	0	2	10
Bocca	0	0	0	0	0	0	0	0	2	2	0	2	3	3	4	2	2	3	23
Ghiandole salivari	0	0	0	1	0	0	0	0	0	0	0	0	0	0	1	0	0	1	3
Tonsille	0	0	0	0	0	0	0	0	0	1	0	1	1	2	1	1	0	0	7
Orofaringe	0	0	0	0	0	0	0	0	0	0	1	1	0	1	0	1	0	0	4
Rinofaringe	0	1	0	0	0	0	0	0	0	1	0	0	0	1	0	0	0	0	3
Ipfaringe	0	0	0	0	0	0	0	0	1	0	0	0	0	0	0	1	0	0	2
Faringe n.a.s.	0	0	0	0	0	0	0	1	0	2	0	1	3	0	0	0	0	0	7
Esofago	0	0	0	0	0	0	0	0	0	2	3	1	0	3	3	5	4	6	27
Stomaco	0	0	0	0	0	1	0	3	1	2	3	7	11	15	35	32	24	44	178
Intestino tenue	0	0	0	0	0	0	0	0	0	0	1	2	1	1	2	0	2	1	10
Colon	0	0	0	0	0	1	1	2	4	11	10	24	15	26	41	42	33	39	249
Retto	0	0	0	0	0	0	0	1	2	4	3	10	7	14	14	11	17	24	107
Ano	0	0	0	0	0	0	0	0	1	0	0	0	1	0	2	0	1	3	8
Fegato	0	0	0	0	0	0	3	0	0	0	2	4	7	11	20	21	16	16	100
Vie biliari	0	0	0	0	0	0	0	0	0	1	0	3	3	4	9	9	6	15	50
Pancreas	0	0	0	0	0	0	0	1	2	2	1	4	9	15	32	26	22	29	143
Cavità nasali	0	0	0	0	0	0	0	0	0	0	0	1	2	2	0	2	1	0	8
Laringe	0	0	0	0	0	0	0	0	0	0	0	3	3	1	2	2	2	2	15
Polmone	0	0	0	0	0	0	0	3	9	4	10	16	18	37	60	41	30	22	250
Altri organi toracici	0	0	0	0	0	0	0	0	0	0	0	0	0	0	0	0	3	1	4
Osso	0	0	1	1	1	1	1	1	0	0	0	0	0	0	0	1	0	1	8
Pelle, melanomi	0	0	0	0	4	2	12	10	5	2	6	9	9	11	11	11	9	11	112
Pelle, non melanomi	0	0	0	0	1	5	4	9	13	20	32	37	43	81	101	147	109	176	778
Mesotelioma	0	0	0	0	0	0	0	1	0	0	0	1	1	0	1	2	0	0	6
Kaposi	0	0	0	0	0	0	0	0	0	0	0	0	0	0	1	0	1	0	2
Tessuti molli	0	0	0	0	0	1	0	0	1	1	0	3	2	0	3	2	1	2	16
Mammella	0	0	0	0	2	7	13	22	66	99	119	122	110	119	103	113	57	85	1037
Vulva	0	0	0	0	0	0	0	0	0	0	1	1	0	1	4	4	1	4	16
Vagina	0	0	0	0	0	0	0	0	0	0	1	0	0	0	0	1	1	2	5
Utero collo	0	0	0	0	0	1	6	10	11	5	3	7	6	2	5	5	1	1	63
Utero corpo	0	0	0	0	0	1	3	7	4	10	12	14	21	16	19	18	11	8	144
Utero n.a.s.	0	0	0	0	0	0	0	0	1	4	4	3	4	4	2	2	1	3	28
Ovaio	0	0	0	0	0	0	0	2	1	3	12	7	10	10	18	17	9	17	106
Altri genitali femminili	0	0	0	0	0	0	0	0	1	0	0	0	3	3	3	1	3	4	18
Placenta	0	0	0	0	0	0	0	0	0	0	0	0	0	0	0	0	0	0	0
Rene eccetto pelvi renali	2	0	0	0	0	0	2	1	0	3	1	6	7	7	10	10	5	5	59
Pelvi renali	0	0	0	0	0	0	0	0	0	0	0	0	0	3	0	0	1	1	6
Uretere	0	0	0	0	0	0	0	0	0	0	0	0	0	0	2	0	1	1	4
Vescica	0	0	0	0	0	0	0	0	2	4	4	8	9	13	19	23	16	15	113
Altri organi urinari	0	0	0	0	0	0	0	1	0	0	0	0	0	1	2	0	2	4	10
Occhio	0	0	0	0	0	0	0	0	1	0	1	1	0	1	0	3	2	1	10
Encefalo e altro SNC	1	1	0	1	0	1	5	2	2	5	1	1	5	6	8	9	5	6	59
Tiroide	0	0	0	0	0	1	3	3	4	6	2	5	4	8	3	4	1	1	45
Ghiandola surrenale	0	0	0	0	0	0	0	0	0	0	0	0	1	1	0	0	1	0	3
Altre ghiandole endocrine	0	0	0	0	0	0	0	0	0	0	0	0	0	0	0	0	0	0	0
Linfoma di Hodgkin	0	0	0	2	0	1	3	3	0	0	0	0	1	2	1	0	1	0	15
Linfoma non Hodgkin	0	1	1	0	0	2	1	5	1	9	12	6	9	14	22	19	19	18	139
Mieloma multiplo	0	0	0	0	0	0	0	0	1	0	1	2	1	7	10	11	4	9	46
Leucemia linfatica	2	3	0	0	0	0	1	0	0	1	2	1	2	2	2	8	2	7	33
Leucemia mieloide	0	0	0	0	0	0	2	1	3	0	2	2	1	5	10	6	2	3	37
Leucemia n.a.s.	0	0	0	0	0	0	0	0	0	1	0	0	0	0	1	1	1	5	9
Mal definite e metastasi	0	0	0	0	1	0	0	0	0	2	4	4	6	4	7	24	19	42	113
Totale	5	6	2	5	9	26	58	90	143	207	255	323	344	456	595	642	449	642	4257
Totale escluso pelle (C44)	5	6	2	5	8	21	54	81	130	187	223	286	301	375	494	495	340	466	3479

## TASSI DI INCIDENZA ANNUALI PER 100.000 RESIDENTI PER CLASSI DI ETÀ.

## PROVINCIA DI BELLUNO. PERIODO 1998-2002.

## MASCHI

Sede	0-4	5-9	10-14	15-19	20-24	25-29	30-34	35-39	40-44	45-49	50-54	55-59	60-64	65-69	70-74	75-79	80-84	85+
Labbro	0.0	0.0	0.0	0.0	0.0	0.0	0.0	2.4	0.0	0.0	2.6	8.8	6.4	7.7	26.2	28.5	23.6	28.4
Lingua	0.0	0.0	0.0	0.0	0.0	0.0	2.3	0.0	5.3	16.1	7.9	11.8	22.3	15.3	17.5	22.8	11.8	28.4
Bocca	0.0	0.0	0.0	0.0	0.0	0.0	2.3	0.0	10.5	2.7	34.1	38.3	60.5	19.1	30.6	34.2	35.4	28.4
Ghiandole salivari	0.0	0.0	0.0	0.0	0.0	2.6	2.3	0.0	2.6	2.7	2.6	5.9	0.0	7.7	0.0	5.7	0.0	14.2
Tonsille	0.0	0.0	0.0	0.0	0.0	0.0	0.0	0.0	2.6	2.7	5.2	8.8	3.2	15.3	13.1	11.4	0.0	14.2
Orofaringe	0.0	0.0	0.0	0.0	0.0	0.0	0.0	0.0	0.0	2.7	5.2	14.7	3.2	3.8	4.4	0.0	0.0	0.0
Rinofaringe	0.0	0.0	0.0	0.0	0.0	0.0	0.0	0.0	0.0	0.0	0.0	0.0	0.0	0.0	4.4	0.0	0.0	0.0
Ipfaringe	0.0	0.0	0.0	0.0	0.0	0.0	0.0	2.4	5.3	8.0	5.2	2.9	31.9	23.0	13.1	0.0	23.6	0.0
Faringe n.a.s.	0.0	0.0	0.0	0.0	0.0	0.0	0.0	0.0	0.0	8.0	5.2	17.7	19.1	19.1	21.8	17.1	0.0	0.0
Esofago	0.0	0.0	0.0	0.0	0.0	0.0	0.0	0.0	5.3	0.0	28.8	38.3	73.3	57.4	48.0	85.5	47.2	99.5
Stomaco	0.0	0.0	0.0	0.0	0.0	0.0	2.3	9.5	5.3	13.4	15.7	44.2	76.5	76.5	157.2	193.7	165.3	256.0
Intestino tenue	0.0	0.0	0.0	0.0	0.0	0.0	0.0	2.4	0.0	0.0	2.6	2.9	6.4	7.7	8.7	5.7	0.0	0.0
Colon	0.0	0.0	0.0	0.0	0.0	0.0	4.7	2.4	10.5	13.4	42.0	70.8	114.7	122.4	218.4	279.1	295.1	156.4
Retto	0.0	0.0	0.0	0.0	0.0	2.6	0.0	2.4	7.9	8.0	28.8	44.2	63.7	141.5	144.1	182.3	177.1	142.2
Ano	0.0	0.0	0.0	0.0	0.0	0.0	0.0	0.0	0.0	2.7	2.6	0.0	0.0	3.8	0.0	5.7	11.8	14.2
Fegato	0.0	0.0	0.0	0.0	0.0	0.0	0.0	0.0	2.6	18.8	31.5	61.9	117.9	172.1	288.2	239.3	188.9	199.1
Vie biliari	0.0	0.0	0.0	0.0	0.0	0.0	0.0	0.0	0.0	2.7	5.2	2.9	3.2	19.1	30.6	51.3	47.2	85.3
Pancreas	0.0	0.0	0.0	0.0	0.0	0.0	0.0	0.0	0.0	8.0	23.6	38.3	47.8	57.4	91.7	136.7	165.3	99.5
Cavità nasali	4.5	0.0	0.0	0.0	0.0	0.0	0.0	0.0	0.0	0.0	0.0	5.9	3.2	0.0	13.1	5.7	0.0	42.7
Laringe	0.0	0.0	0.0	0.0	0.0	0.0	0.0	0.0	13.2	16.1	39.3	53.1	63.7	53.6	83.0	91.1	82.6	14.2
Polmone	0.0	0.0	0.0	0.0	0.0	0.0	0.0	7.1	5.3	29.5	83.9	150.4	315.5	401.7	642.0	763.4	731.9	497.7
Altri organi toracici	4.5	0.0	0.0	0.0	0.0	5.1	2.3	0.0	0.0	0.0	0.0	0.0	0.0	0.0	8.7	5.7	0.0	14.2
Osso	0.0	0.0	0.0	0.0	0.0	0.0	0.0	2.4	0.0	2.7	0.0	0.0	0.0	7.7	0.0	5.7	0.0	0.0
Pelle, melanomi	0.0	0.0	0.0	0.0	3.3	10.2	4.7	14.2	13.2	16.1	18.4	26.5	15.9	68.9	69.9	62.7	23.6	28.4
Pelle, non melanomi	0.0	0.0	0.0	4.1	0.0	2.6	16.4	18.9	47.4	56.3	91.8	191.7	219.9	306.0	458.6	803.2	1003.4	824.8
Mesotelioma	0.0	0.0	0.0	0.0	0.0	0.0	0.0	0.0	2.6	5.4	0.0	5.9	3.2	7.7	4.4	5.7	11.8	14.2
Kaposi	0.0	0.0	0.0	0.0	0.0	0.0	0.0	0.0	0.0	2.7	0.0	5.9	0.0	3.8	4.4	5.7	23.6	14.2
Tessuti molli	0.0	0.0	0.0	4.1	0.0	5.1	0.0	0.0	2.6	8.0	5.2	2.9	19.1	0.0	13.1	5.7	0.0	14.2
Mammella	0.0	0.0	0.0	0.0	0.0	0.0	0.0	0.0	0.0	0.0	0.0	2.9	3.2	0.0	4.4	17.1	11.8	14.2
Pene	0.0	0.0	0.0	0.0	0.0	0.0	0.0	0.0	0.0	2.7	5.2	2.9	6.4	0.0	8.7	17.1	11.8	14.2
Prostata	0.0	0.0	0.0	0.0	0.0	0.0	0.0	0.0	0.0	0.0	23.6	94.4	302.7	520.3	703.1	877.3	850.0	711.0
Testicolo	0.0	0.0	0.0	0.0	9.9	12.8	11.7	7.1	7.9	5.4	2.6	8.8	0.0	0.0	0.0	0.0	0.0	0.0
Altri genitali maschili	0.0	0.0	0.0	0.0	0.0	0.0	0.0	0.0	0.0	0.0	0.0	0.0	0.0	0.0	0.0	0.0	11.8	0.0
Rene eccetto pelvi renali	0.0	0.0	0.0	0.0	0.0	0.0	4.7	0.0	2.6	18.8	28.8	38.3	54.2	110.9	74.2	68.4	59.0	71.1
Pelvi renali	0.0	0.0	0.0	0.0	0.0	0.0	0.0	0.0	2.6	0.0	0.0	0.0	6.4	3.8	13.1	11.4	0.0	0.0
Uretere	0.0	0.0	0.0	0.0	0.0	0.0	0.0	0.0	0.0	0.0	0.0	2.9	0.0	3.8	13.1	11.4	0.0	0.0
Vescica	0.0	0.0	0.0	0.0	0.0	0.0	2.3	4.7	13.2	21.4	26.2	88.5	114.7	210.4	345.0	336.1	295.1	483.5
Altri organi urinari	0.0	0.0	0.0	0.0	0.0	0.0	0.0	0.0	0.0	2.7	2.6	2.9	19.1	3.8	4.4	39.9	35.4	42.7
Occhio	4.5	0.0	0.0	0.0	0.0	0.0	0.0	2.4	2.6	0.0	0.0	5.9	6.4	0.0	4.4	5.7	0.0	0.0
Encefalo e altro SNC	4.5	0.0	4.5	4.1	0.0	5.1	2.3	2.4	5.3	5.4	2.6	23.6	19.1	26.8	34.9	22.8	59.0	0.0
Tiroide	0.0	0.0	0.0	4.1	6.6	2.6	2.3	2.4	2.6	2.7	2.6	2.9	6.4	7.7	4.4	5.7	11.8	0.0
Ghiandola surrenale	0.0	0.0	0.0	0.0	0.0	0.0	0.0	0.0	0.0	5.4	0.0	0.0	0.0	0.0	0.0	0.0	0.0	0.0
Altre ghiandole endocrine	0.0	0.0	0.0	0.0	0.0	0.0	0.0	0.0	0.0	0.0	0.0	0.0	0.0	0.0	0.0	0.0	0.0	0.0
Linfoma di Hodgkin	0.0	0.0	4.5	0.0	0.0	5.1	7.0	7.1	5.3	5.4	2.6	0.0	3.2	3.8	4.4	0.0	11.8	0.0
Linfoma non Hodgkin	9.0	4.5	0.0	4.1	6.6	5.1	14.0	7.1	13.2	16.1	13.1	38.3	51.0	45.9	83.0	74.1	106.2	113.8
Mieloma multiplo	0.0	0.0	0.0	0.0	0.0	0.0	0.0	0.0	2.6	8.0	7.9	5.9	15.9	23.0	39.3	22.8	11.8	28.4
Leucemia linfatica	4.5	4.5	4.5	4.1	0.0	0.0	0.0	0.0	2.6	5.4	2.6	5.9	9.6	38.3	21.8	34.2	70.8	28.4
Leucemia mieloide	0.0	0.0	0.0	0.0	0.0	5.1	0.0	0.0	0.0	0.0	7.9	0.0	9.6	23.0	17.5	22.8	82.6	42.7
Leucemia n.a.s.	0.0	0.0	0.0	0.0	0.0	0.0	0.0	0.0	0.0	0.0	0.0	0.0	0.0	3.8	8.7	0.0	11.8	14.2
Mal definite e metastasi	0.0	0.0	0.0	0.0	3.3	0.0	0.0	2.4	2.6	2.7	7.9	23.6	35.1	42.1	78.6	91.1	212.5	156.4
Totale	31.6	8.9	13.5	24.7	29.8	63.9	81.8	99.5	205.3	348.3	624.1	1203.4	1953.3	2685.5	3878.2	4711.2	4922.7	4351.5
Totale escluso pelle (C44)	31.6	8.9	13.5	20.6	29.8	61.3	65.4	80.5	157.9	292.1	532.3	1011.7	1733.5	2379.5	3419.7	3907.9	3919.3	3526.7

## TASSI DI INCIDENZA ANNUALI PER 100.000 RESIDENTI PER CLASSI DI ETÀ.

## PROVINCIA DI BELLUNO. PERIODO 1998-2002.

## FEMMINE

Sede	0-4	5-9	10-14	15-19	20-24	25-29	30-34	35-39	40-44	45-49	50-54	55-59	60-64	65-69	70-74	75-79	80-84	85+
Labbro	0.0	0.0	0.0	0.0	0.0	0.0	0.0	0.0	0.0	0.0	2.7	5.8	3.0	3.1	0.0	6.4	0.0	8.4
Lingua	0.0	0.0	0.0	0.0	0.0	2.6	0.0	2.5	2.8	0.0	0.0	2.9	3.0	3.1	3.0	3.2	0.0	8.4
Bocca	0.0	0.0	0.0	0.0	0.0	0.0	0.0	0.0	5.6	5.6	0.0	5.8	8.9	9.4	11.9	6.4	10.9	12.6
Ghiandole salivari	0.0	0.0	0.0	4.4	0.0	0.0	0.0	0.0	0.0	0.0	0.0	0.0	0.0	0.0	3.0	0.0	0.0	4.2
Tonsille	0.0	0.0	0.0	0.0	0.0	0.0	0.0	0.0	0.0	2.8	0.0	2.9	3.0	6.2	3.0	3.2	0.0	0.0
Orofaringe	0.0	0.0	0.0	0.0	0.0	0.0	0.0	0.0	0.0	0.0	2.7	2.9	0.0	3.1	0.0	3.2	0.0	0.0
Rinofaringe	0.0	4.7	0.0	0.0	0.0	0.0	0.0	0.0	0.0	2.8	0.0	0.0	0.0	3.1	0.0	0.0	0.0	0.0
Ipfaringe	0.0	0.0	0.0	0.0	0.0	0.0	0.0	0.0	2.8	0.0	0.0	0.0	0.0	0.0	0.0	3.2	0.0	0.0
Faringe n.a.s.	0.0	0.0	0.0	0.0	0.0	0.0	0.0	2.5	0.0	5.6	0.0	2.9	8.9	0.0	0.0	0.0	0.0	0.0
Esofago	0.0	0.0	0.0	0.0	0.0	0.0	0.0	0.0	0.0	5.6	8.0	2.9	0.0	9.4	9.0	15.9	21.8	25.1
Stomaco	0.0	0.0	0.0	0.0	0.0	2.6	0.0	7.5	2.8	5.6	8.0	20.4	32.6	46.9	104.5	102.0	130.6	184.1
Intestino tenue	0.0	0.0	0.0	0.0	0.0	0.0	0.0	0.0	0.0	0.0	2.7	5.8	3.0	3.1	6.0	0.0	10.9	4.2
Colon	0.0	0.0	0.0	0.0	0.0	2.6	2.4	5.0	11.1	30.9	26.8	70.0	44.4	81.2	122.4	133.9	179.6	163.2
Retto	0.0	0.0	0.0	0.0	0.0	0.0	0.0	2.5	5.6	11.2	8.0	29.2	20.7	43.7	41.8	35.1	92.5	100.4
Ano	0.0	0.0	0.0	0.0	0.0	0.0	0.0	0.0	2.8	0.0	0.0	0.0	3.0	0.0	6.0	0.0	5.4	12.6
Fegato	0.0	0.0	0.0	0.0	0.0	0.0	7.3	0.0	0.0	0.0	5.4	11.7	20.7	34.4	59.7	66.9	87.1	67.0
Vie biliari	0.0	0.0	0.0	0.0	0.0	0.0	0.0	0.0	0.0	2.8	0.0	8.8	8.9	12.5	26.9	28.7	32.6	62.8
Pancreas	0.0	0.0	0.0	0.0	0.0	0.0	0.0	2.5	5.6	5.6	2.7	11.7	26.7	46.9	95.5	82.9	119.7	121.4
Cavità nasali	0.0	0.0	0.0	0.0	0.0	0.0	0.0	0.0	0.0	0.0	0.0	2.9	5.9	6.2	0.0	6.4	5.4	0.0
Laringe	0.0	0.0	0.0	0.0	0.0	0.0	0.0	0.0	0.0	0.0	0.0	8.8	8.9	3.1	6.0	6.4	10.9	8.4
Polmone	0.0	0.0	0.0	0.0	0.0	0.0	0.0	7.5	25.0	11.2	26.8	46.7	53.3	115.6	179.1	130.7	163.2	92.1
Altri organi toracici	0.0	0.0	0.0	0.0	0.0	0.0	0.0	0.0	0.0	0.0	0.0	0.0	0.0	0.0	0.0	0.0	16.3	4.2
Osso	0.0	0.0	4.7	4.4	3.4	2.6	2.4	2.5	0.0	0.0	0.0	0.0	0.0	0.0	0.0	3.2	0.0	4.2
Pelle, melanomi	0.0	0.0	0.0	0.0	13.6	5.3	29.2	25.1	13.9	5.6	16.1	26.3	26.7	34.4	32.8	35.1	49.0	46.0
Pelle, non melanomi	0.0	0.0	0.0	0.0	3.4	13.1	9.7	22.6	36.1	56.1	85.8	108.0	127.4	253.0	301.5	468.5	593.1	736.6
Mesotelioma	0.0	0.0	0.0	0.0	0.0	0.0	0.0	2.5	0.0	0.0	0.0	2.9	3.0	0.0	3.0	6.4	0.0	0.0
Kaposi	0.0	0.0	0.0	0.0	0.0	0.0	0.0	0.0	0.0	0.0	0.0	0.0	0.0	0.0	3.0	0.0	5.4	0.0
Tessuti molli	0.0	0.0	0.0	0.0	0.0	2.6	0.0	0.0	2.8	2.8	0.0	8.8	5.9	0.0	9.0	6.4	5.4	8.4
Mammella	0.0	0.0	0.0	0.0	6.8	18.4	31.6	55.2	183.4	277.8	319.2	356.0	325.8	371.7	307.5	360.1	310.2	355.7
Vulva	0.0	0.0	0.0	0.0	0.0	0.0	0.0	0.0	0.0	0.0	2.7	2.9	0.0	3.1	11.9	12.7	5.4	16.7
Vagina	0.0	0.0	0.0	0.0	0.0	0.0	0.0	0.0	0.0	0.0	2.7	0.0	0.0	0.0	0.0	3.2	5.4	8.4
Utero collo	0.0	0.0	0.0	0.0	0.0	2.6	14.6	25.1	30.6	14.0	8.0	20.4	17.8	6.2	14.9	15.9	5.4	4.2
Utero corpo	0.0	0.0	0.0	0.0	0.0	2.6	7.3	17.6	11.1	28.1	32.2	40.9	62.2	50.0	56.7	57.4	59.9	33.5
Utero n.a.s.	0.0	0.0	0.0	0.0	0.0	0.0	0.0	0.0	2.8	11.2	10.7	8.8	11.8	12.5	6.0	6.4	5.4	12.6
Ovaio	0.0	0.0	0.0	0.0	0.0	0.0	0.0	5.0	2.8	8.4	32.2	20.4	29.6	31.2	53.7	54.2	49.0	71.1
Altri genitali femminili	0.0	0.0	0.0	0.0	0.0	0.0	0.0	0.0	2.8	0.0	0.0	0.0	8.9	9.4	9.0	3.2	16.3	16.7
Placenta	0.0	0.0	0.0	0.0	0.0	0.0	0.0	0.0	0.0	0.0	0.0	0.0	0.0	0.0	0.0	0.0	0.0	0.0
Rene eccetto pelvi renali	9.5	0.0	0.0	0.0	0.0	0.0	4.9	2.5	0.0	8.4	2.7	17.5	20.7	21.9	29.8	31.9	27.2	20.9
Pelvi renali	0.0	0.0	0.0	0.0	0.0	0.0	0.0	0.0	0.0	0.0	0.0	0.0	8.9	0.0	0.0	3.2	5.4	4.2
Uretere	0.0	0.0	0.0	0.0	0.0	0.0	0.0	0.0	0.0	0.0	0.0	0.0	0.0	0.0	6.0	0.0	5.4	4.2
Vescica	0.0	0.0	0.0	0.0	0.0	0.0	0.0	0.0	5.6	11.2	10.7	23.3	26.7	40.6	56.7	73.3	87.1	62.8
Altri organi urinari	0.0	0.0	0.0	0.0	0.0	0.0	0.0	2.5	0.0	0.0	0.0	0.0	0.0	3.1	6.0	0.0	10.9	16.7
Occhio	0.0	0.0	0.0	0.0	0.0	0.0	0.0	0.0	2.8	0.0	2.7	2.9	0.0	3.1	0.0	9.6	10.9	4.2
Encefalo e altro SNC	4.8	4.7	0.0	4.4	0.0	2.6	12.1	5.0	5.6	14.0	2.7	2.9	14.8	18.7	23.9	28.7	27.2	25.1
Tiroide	0.0	0.0	0.0	0.0	0.0	2.6	7.3	7.5	11.1	16.8	5.4	14.6	11.8	25.0	9.0	12.7	5.4	4.2
Ghiandola surrenale	0.0	0.0	0.0	0.0	0.0	0.0	0.0	0.0	0.0	0.0	0.0	0.0	3.0	3.1	0.0	0.0	5.4	0.0
Altre ghiandole endocrine	0.0	0.0	0.0	0.0	0.0	0.0	0.0	0.0	0.0	0.0	0.0	0.0	0.0	0.0	0.0	0.0	0.0	0.0
Linfoma di Hodgkin	0.0	0.0	0.0	8.7	0.0	2.6	2.4	7.5	8.3	0.0	0.0	0.0	3.0	6.2	3.0	0.0	5.4	0.0
Linfoma non Hodgkin	0.0	4.7	4.7	0.0	0.0	5.3	2.4	12.6	2.8	25.3	32.2	17.5	26.7	43.7	65.7	60.6	103.4	75.3
Mieloma multiplo	0.0	0.0	0.0	0.0	0.0	0.0	0.0	0.0	2.8	0.0	2.7	5.8	3.0	21.9	29.8	35.1	21.8	37.7
Leucemia linfatica	9.5	14.1	0.0	0.0	0.0	0.0	2.4	0.0	0.0	2.8	5.4	2.9	5.9	6.2	6.0	25.5	10.9	29.3
Leucemia mieloide	0.0	0.0	0.0	0.0	0.0	0.0	4.9	2.5	8.3	0.0	5.4	5.8	3.0	15.6	29.8	19.1	10.9	12.6
Leucemia n.a.s.	0.0	0.0	0.0	0.0	0.0	0.0	0.0	0.0	0.0	2.8	0.0	0.0	0.0	3.0	3.2	3.2	5.4	20.9
Mal definite e metastasi	0.0	0.0	0.0	0.0	3.4	0.0	0.0	0.0	0.0	5.6	10.7	11.7	17.8	12.5	20.9	76.5	103.4	175.8
Totale	23.9	28.2	9.4	21.8	30.6	68.3	140.9	226.0	397.4	580.9	684.1	942.7	1018.9	1424.3	1776.1	2046.1	2443.3	2686.9
Totale escluso pelle (C44)	23.9	28.2	9.4	21.8	27.2	55.1	131.2	203.4	361.3	524.8	598.2	834.7	891.6	1171.3	1474.6	1577.6	1850.1	1950.3