

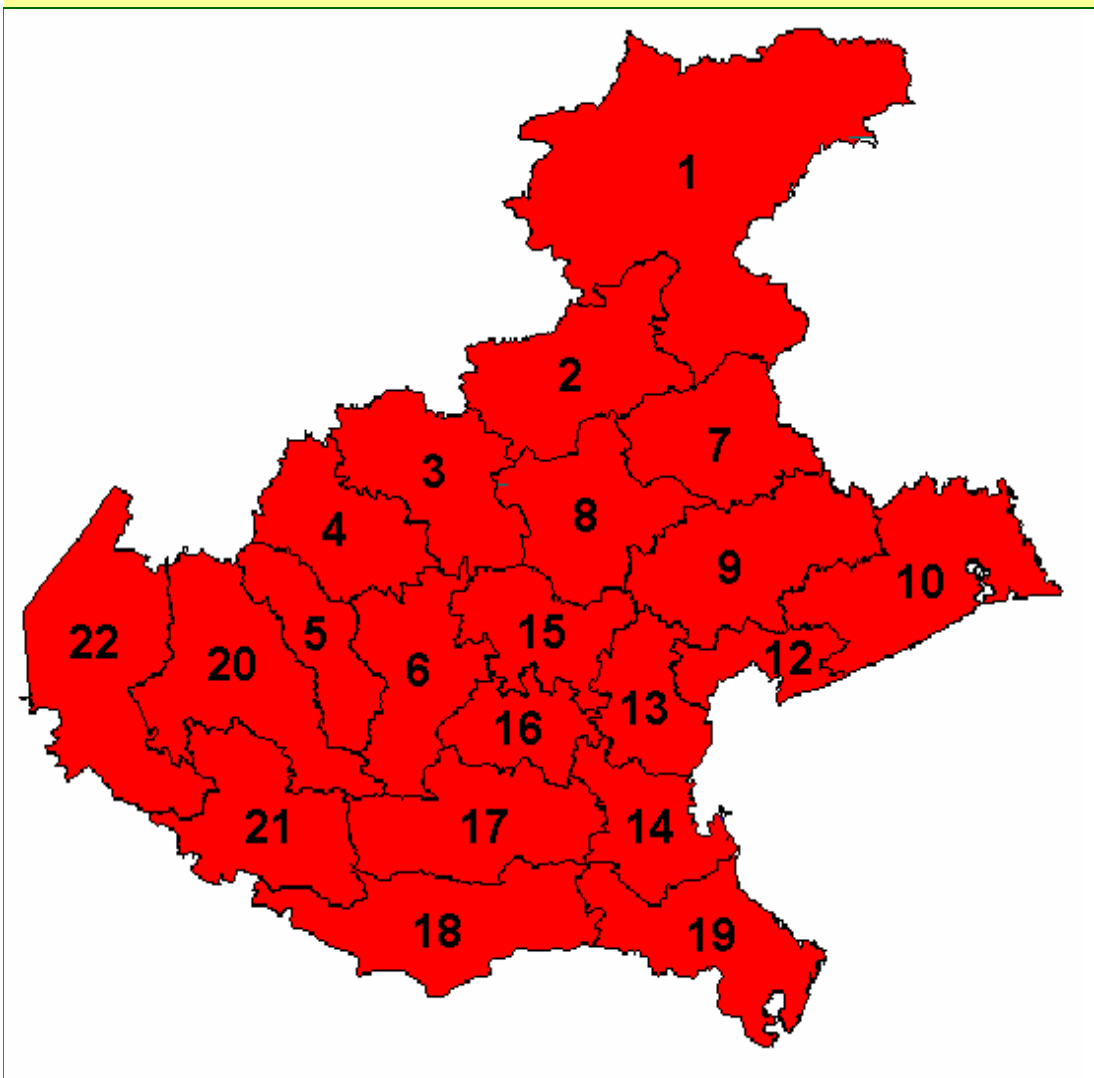


Riunione annuale dello Screening Citologico
Padova, 30 novembre 2010

Risultati 2009

Chiara Fedato
Registro Tumori del Veneto
Istituto Oncologico Veneto - IRCCS

Programmi di screening citologico attivi in Veneto al 31.12.2009



**Popolazione Veneto
25-64 interessata:**

1.377.536

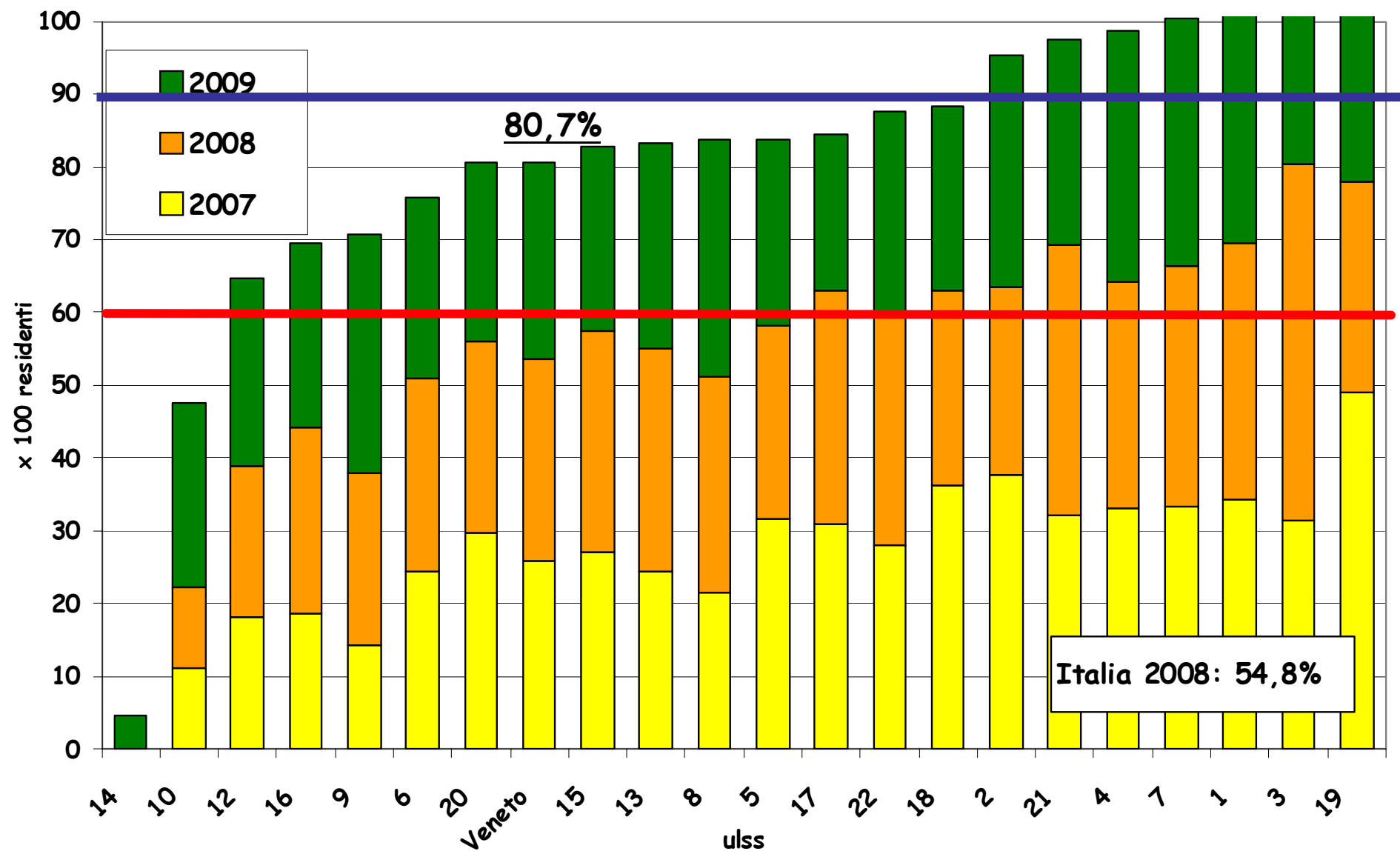
100%

Dati principali

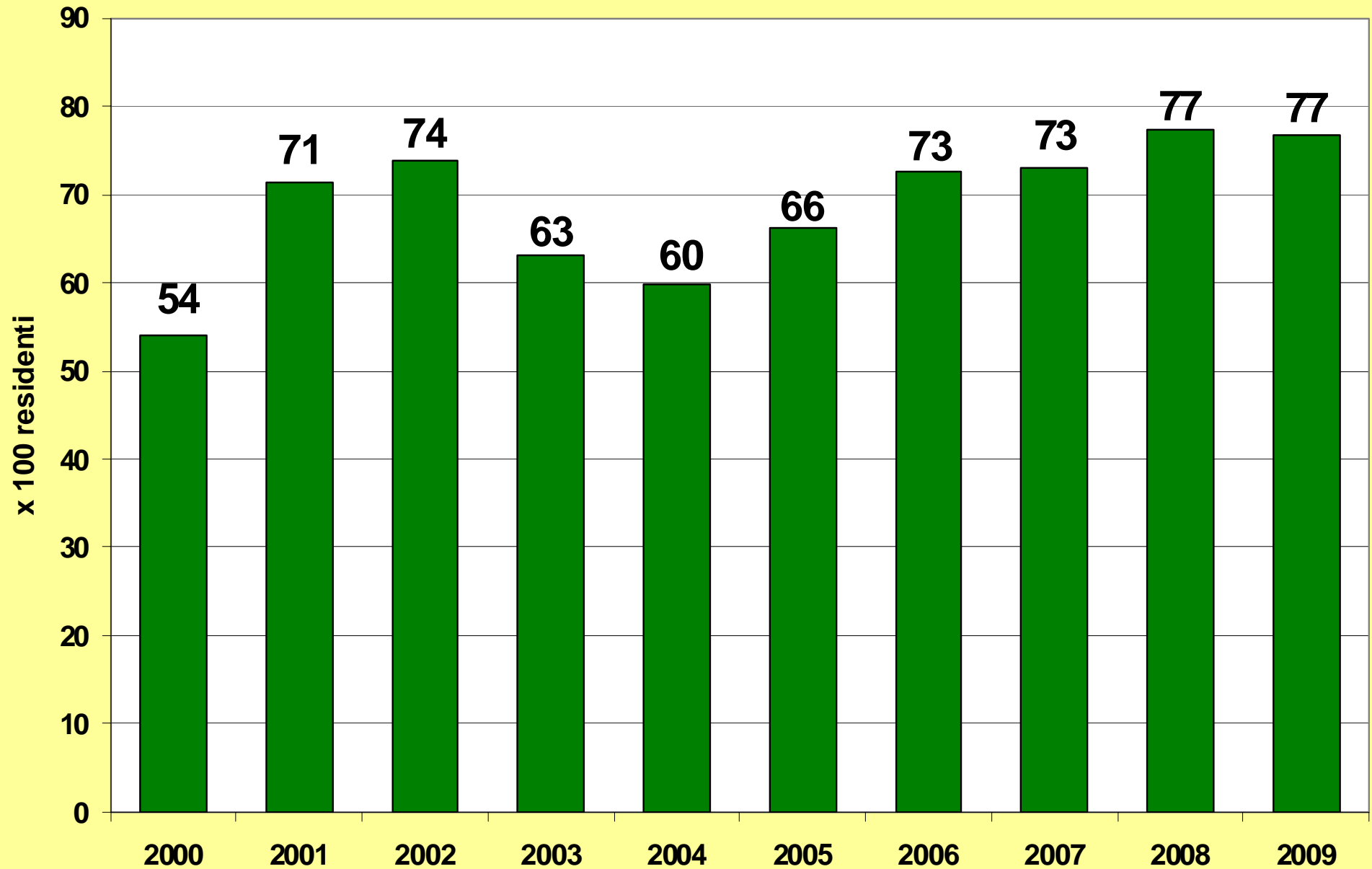
Residenti 25-64enni	1.377.536
Target annuo	459.179

	2009/07	2009	2008	2007
Invitate	1.012.404	352.469	340.932	319.007
Estensione inviti	80,7	27,1	27,8	25,8
Screenate	457.010	165.801	147.566	143.643
Copertura del test di screening	33,2	36,1	32,7	32,9

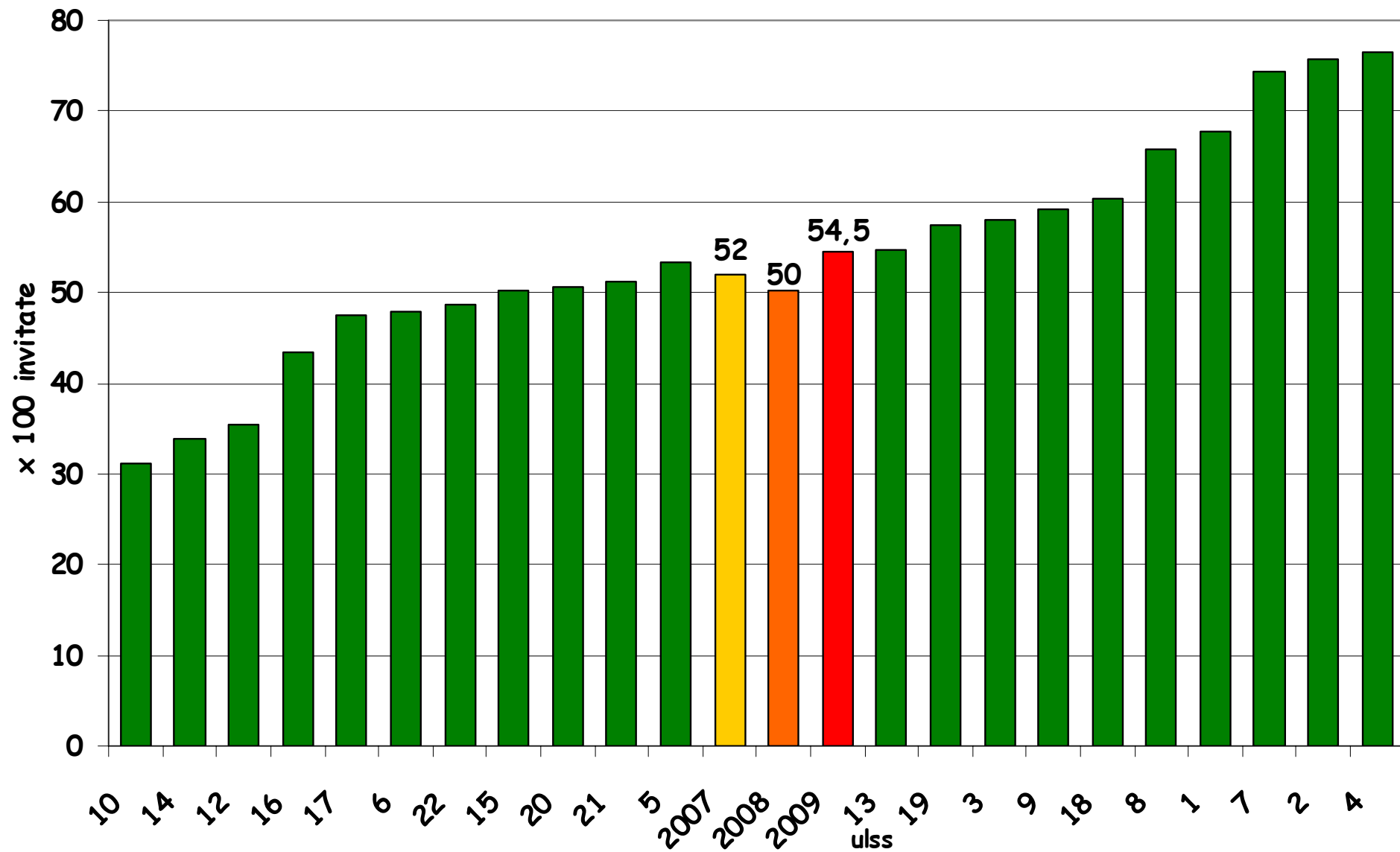
Estensione triennale inviti 2007-2009



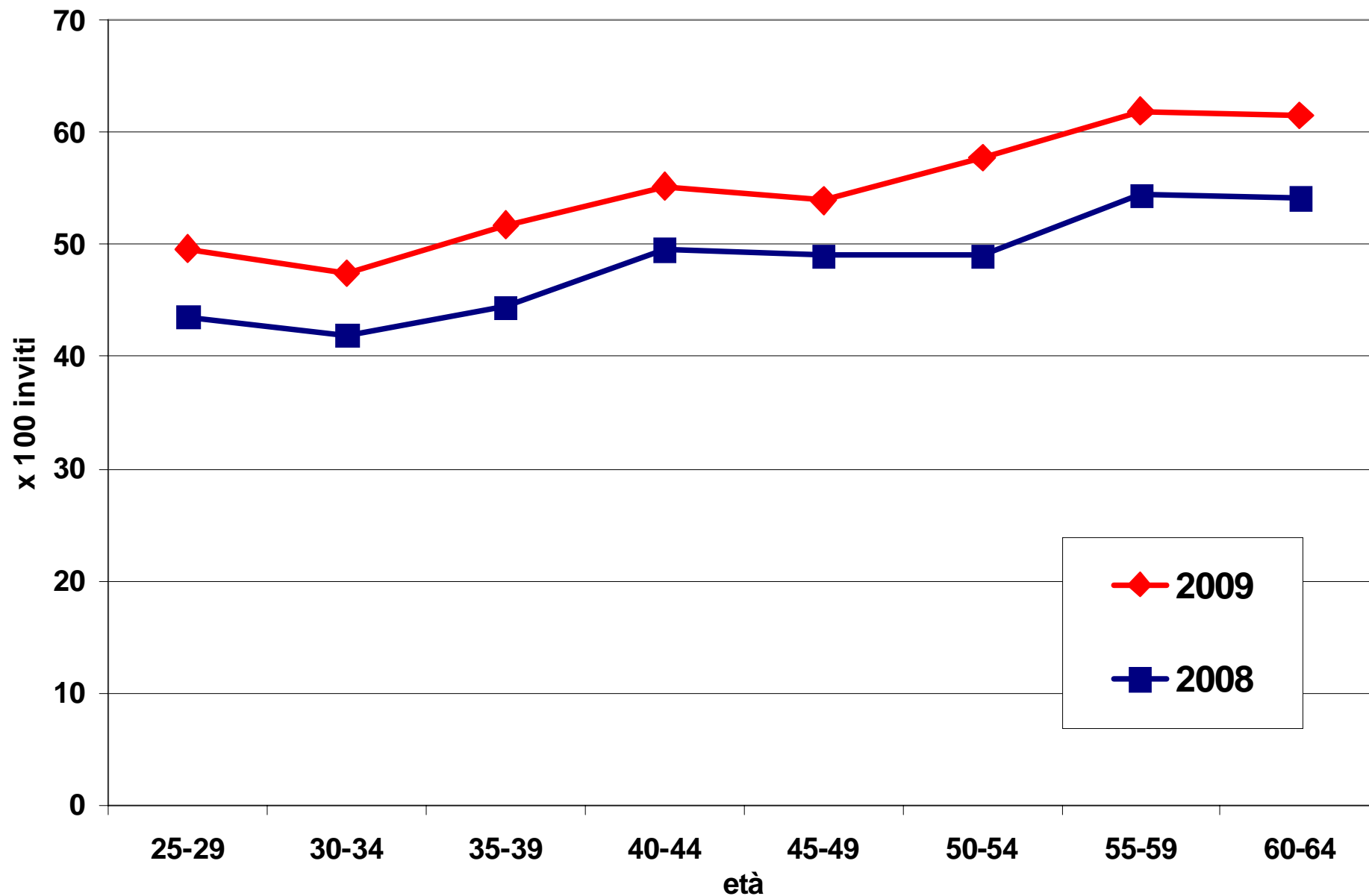
Estensione annuale in Veneto



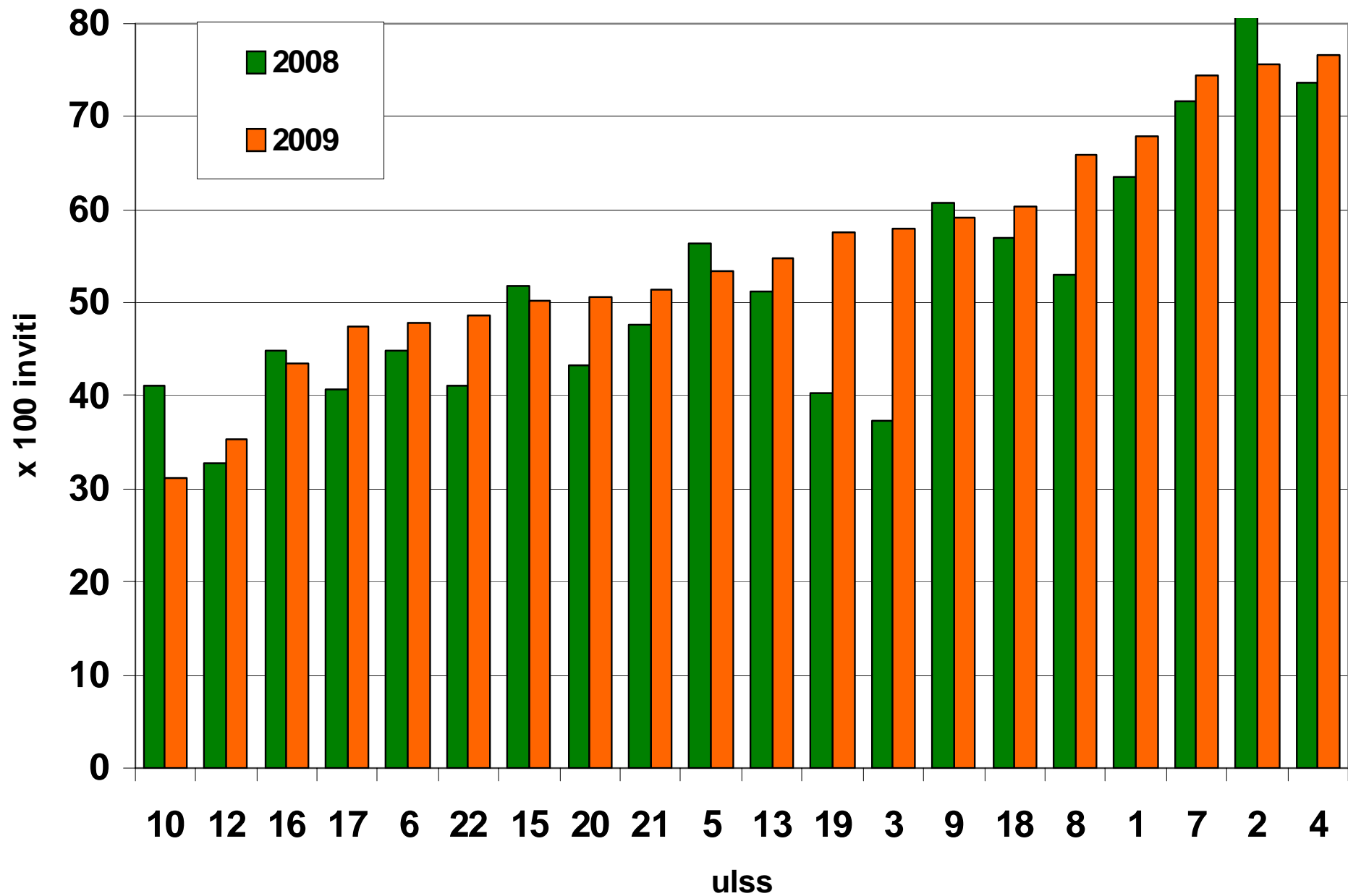
Adesione corretta 2009



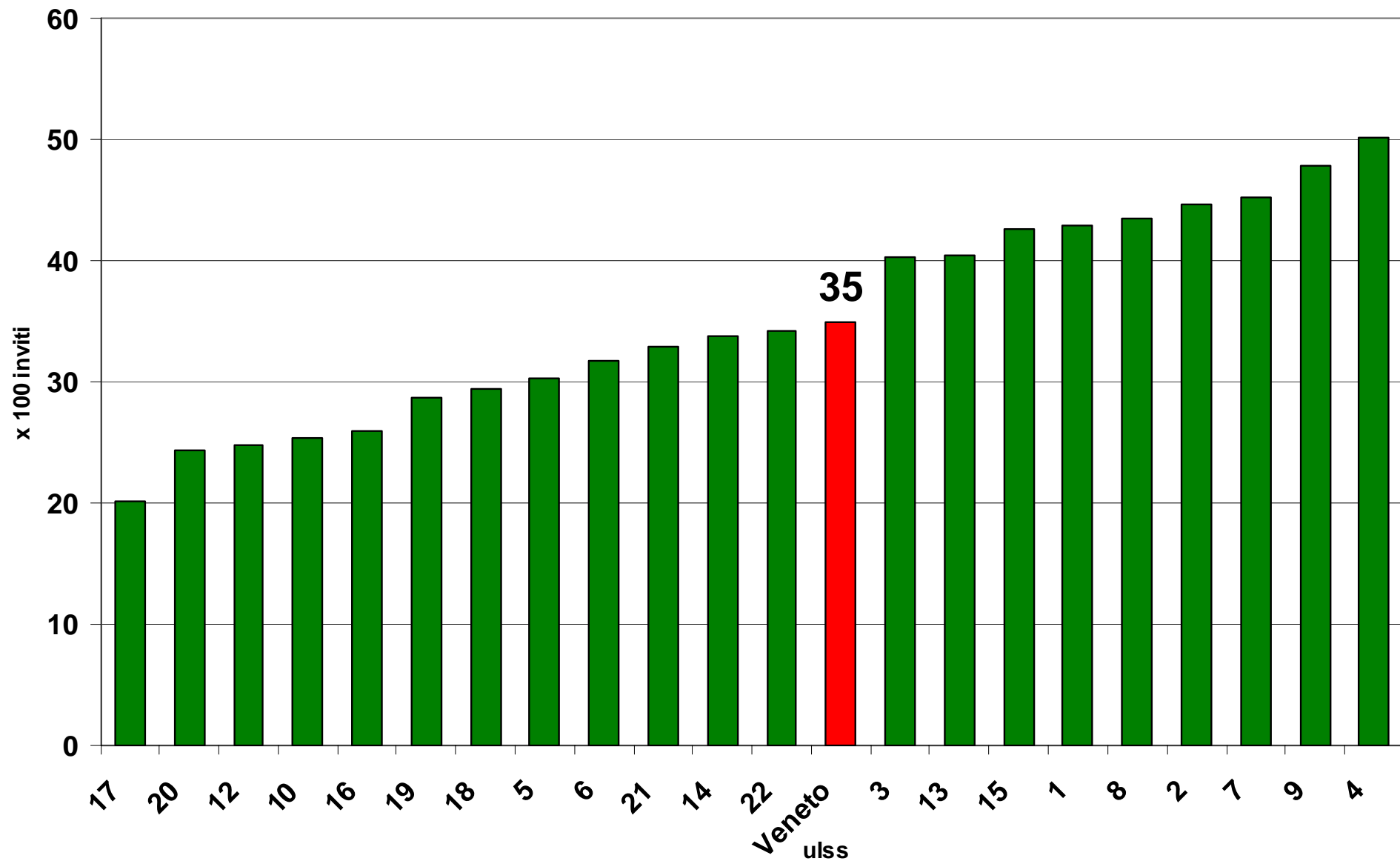
Adesione corretta 2008/09 per fascia d'età



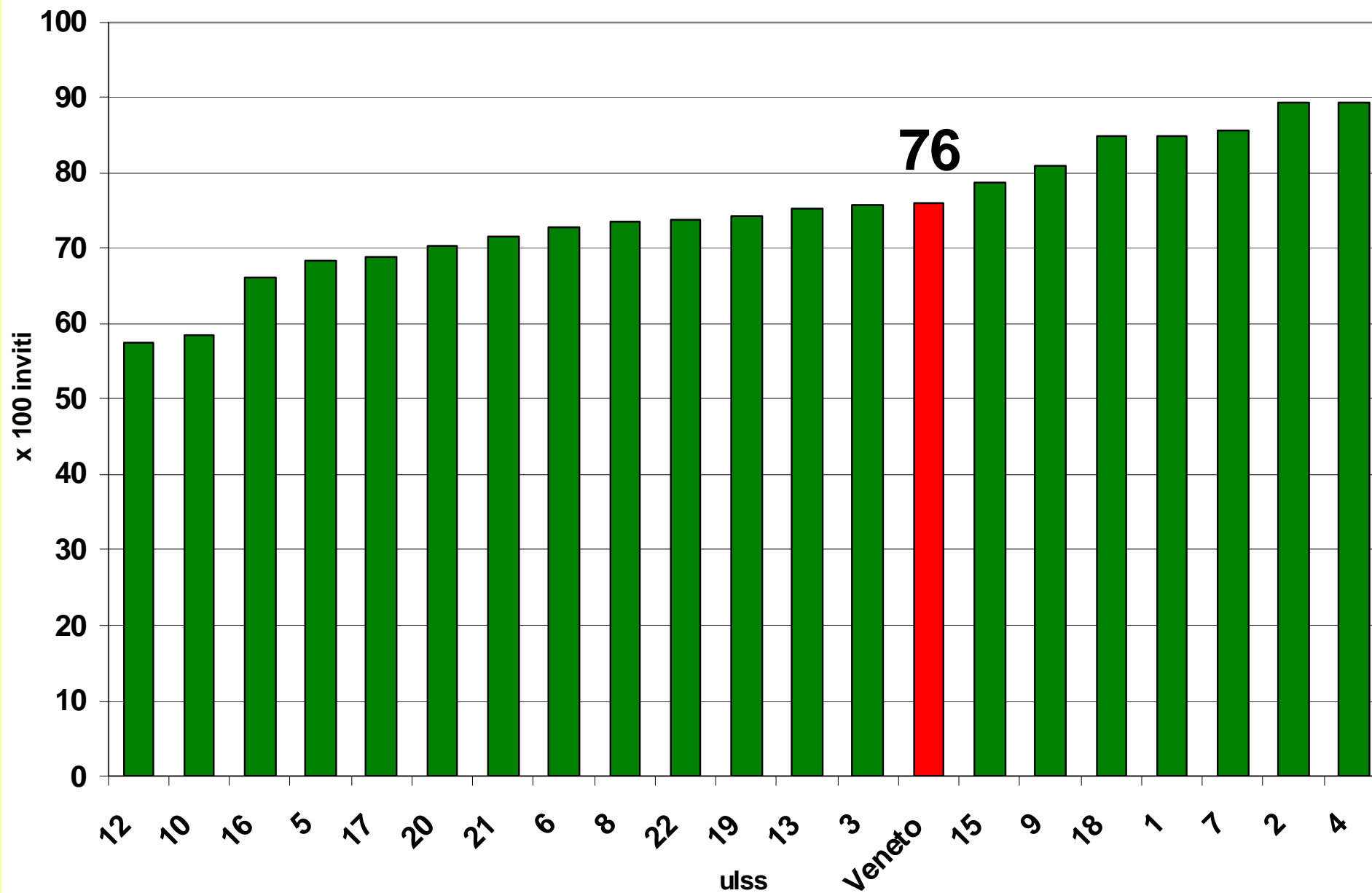
Adesione corretta 2008 - 2009



Adesione corretta - primi esami



Adesione corretta - esami successivi



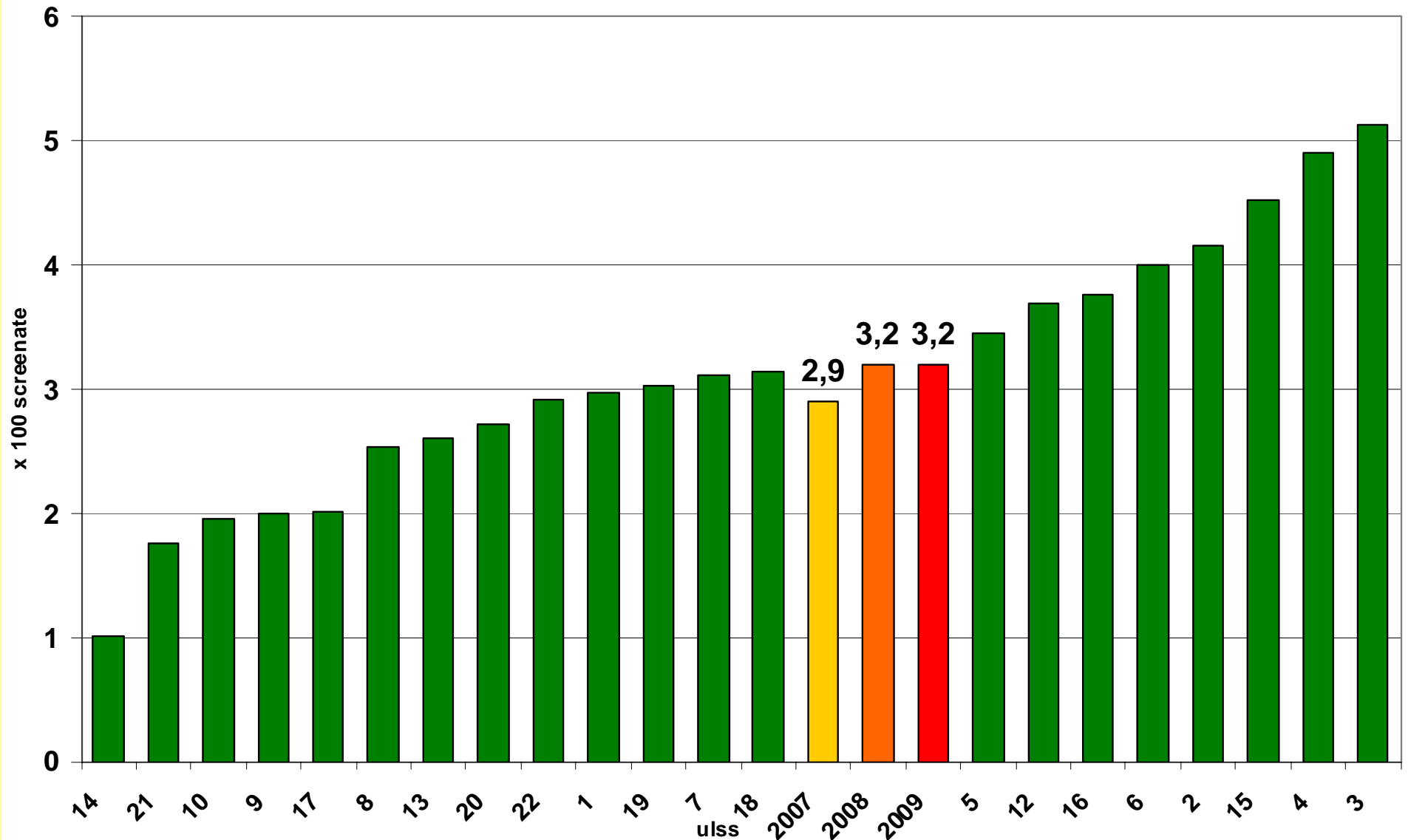
Distribuzione test - 2009

180.711 test eseguiti

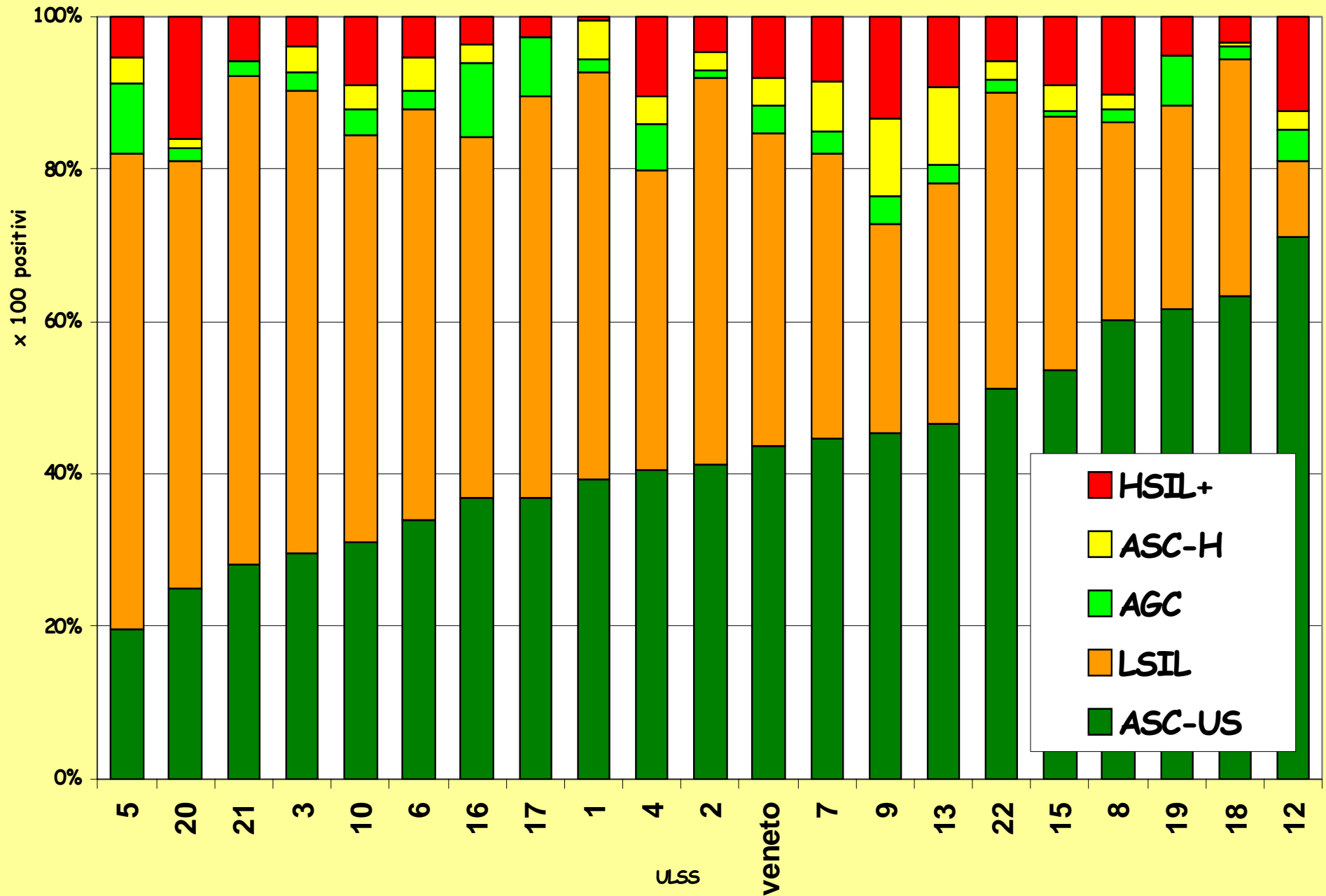
5.793 test positivi

Diagnosi Citologica	N°	%	Range (%)
CTM	15	0,01	0 - 0,06
HSIL	448	0,25	0 - 0,51
LSIL	2.373	1,31	0 - 3,10
ASC-H	217	0,12	0 - 0,26
ASC-US	1.984	1,10	0 - 2,62
ASCUS	546	0,30	0 - 2,43
AGC	172	0,10	0 - 0,37
AGUS	38	0,02	0 - 0,30
MODIF. REATT.	2.722	1,51	0 - 42,9
NEGATIVO	163.386	90,4	46,3 - 97,8
INADEGUATO	8.810	4,88	0,11 - 11,5
TOTALE	180.711	100	

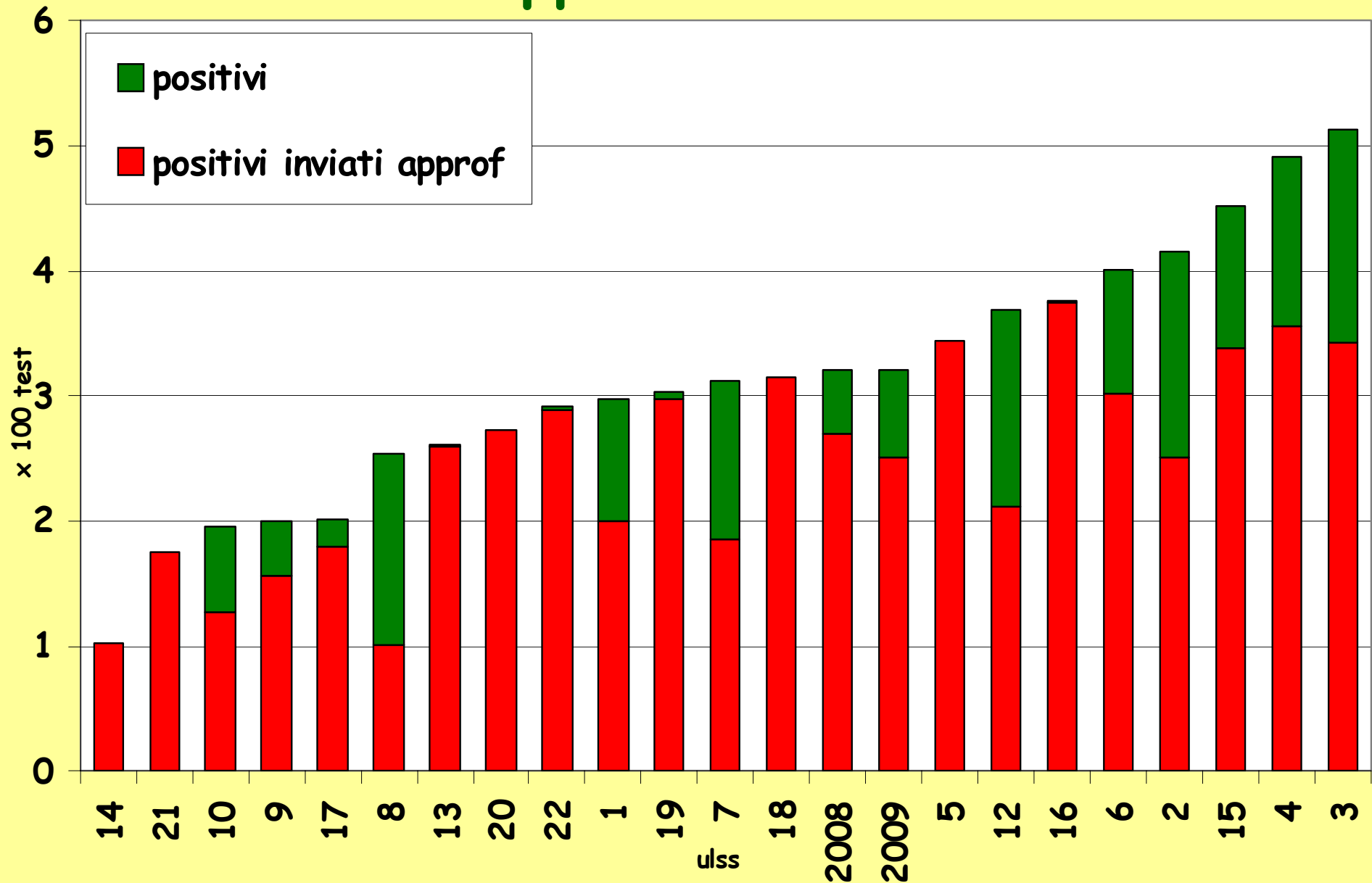
Pap test positivi - 2009



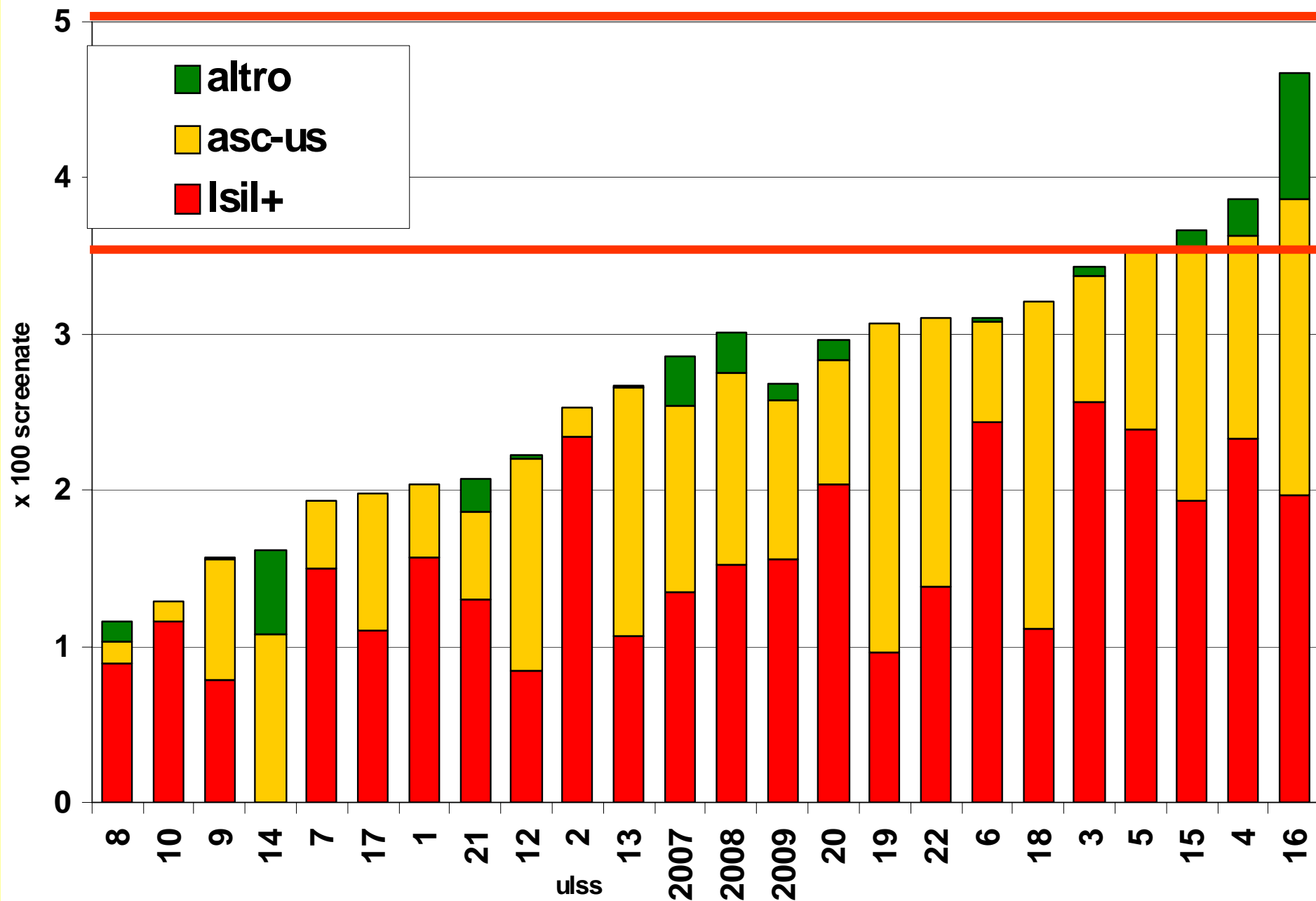
Distribuzione diagnosi positive - 2009



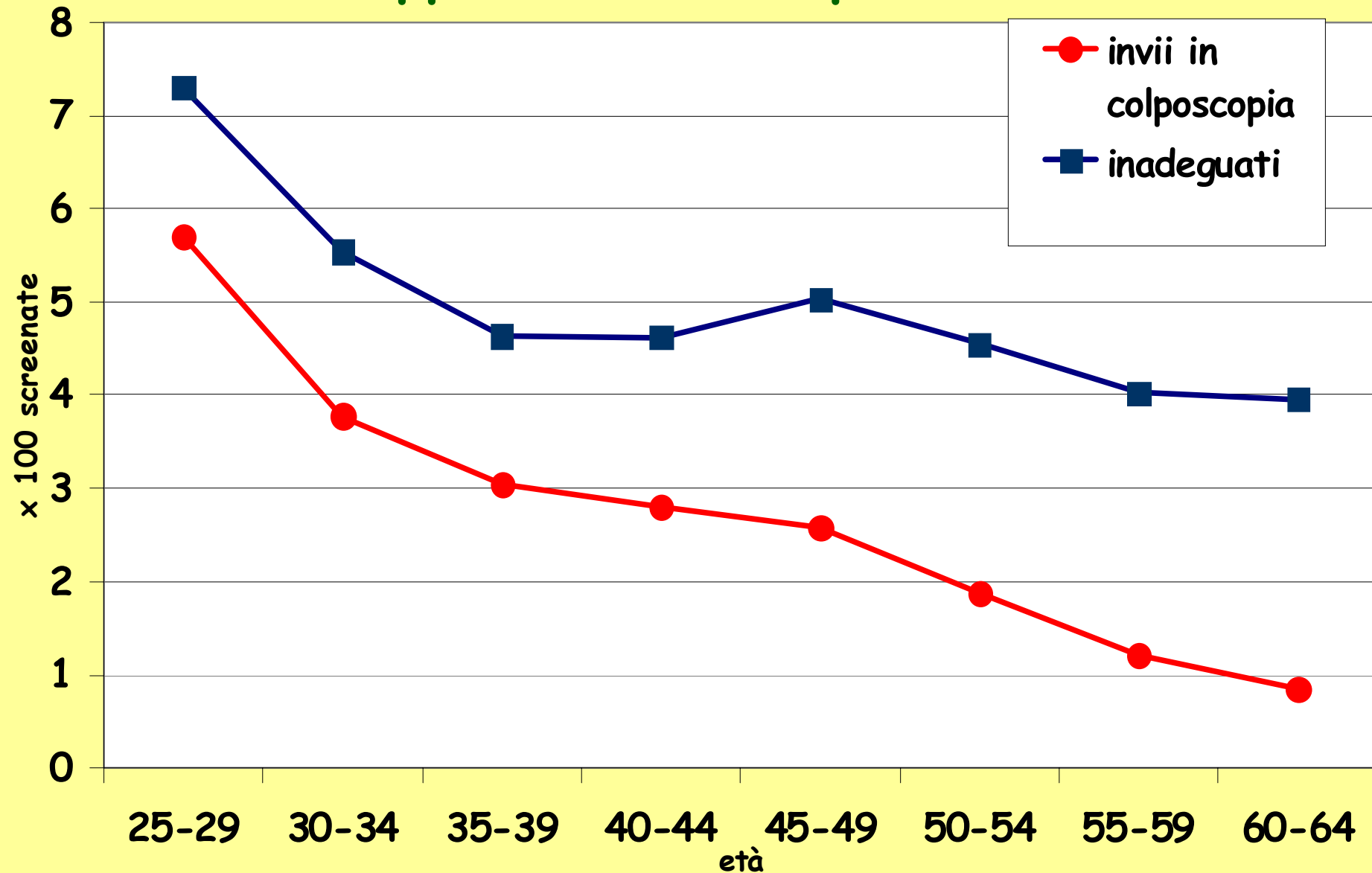
Confronto: positivi e positivi inviati ad approfondimento



Distribuzione invii in colposcopia - 2009



Distribuzione degli inadeguati e invii in approfondimento per età



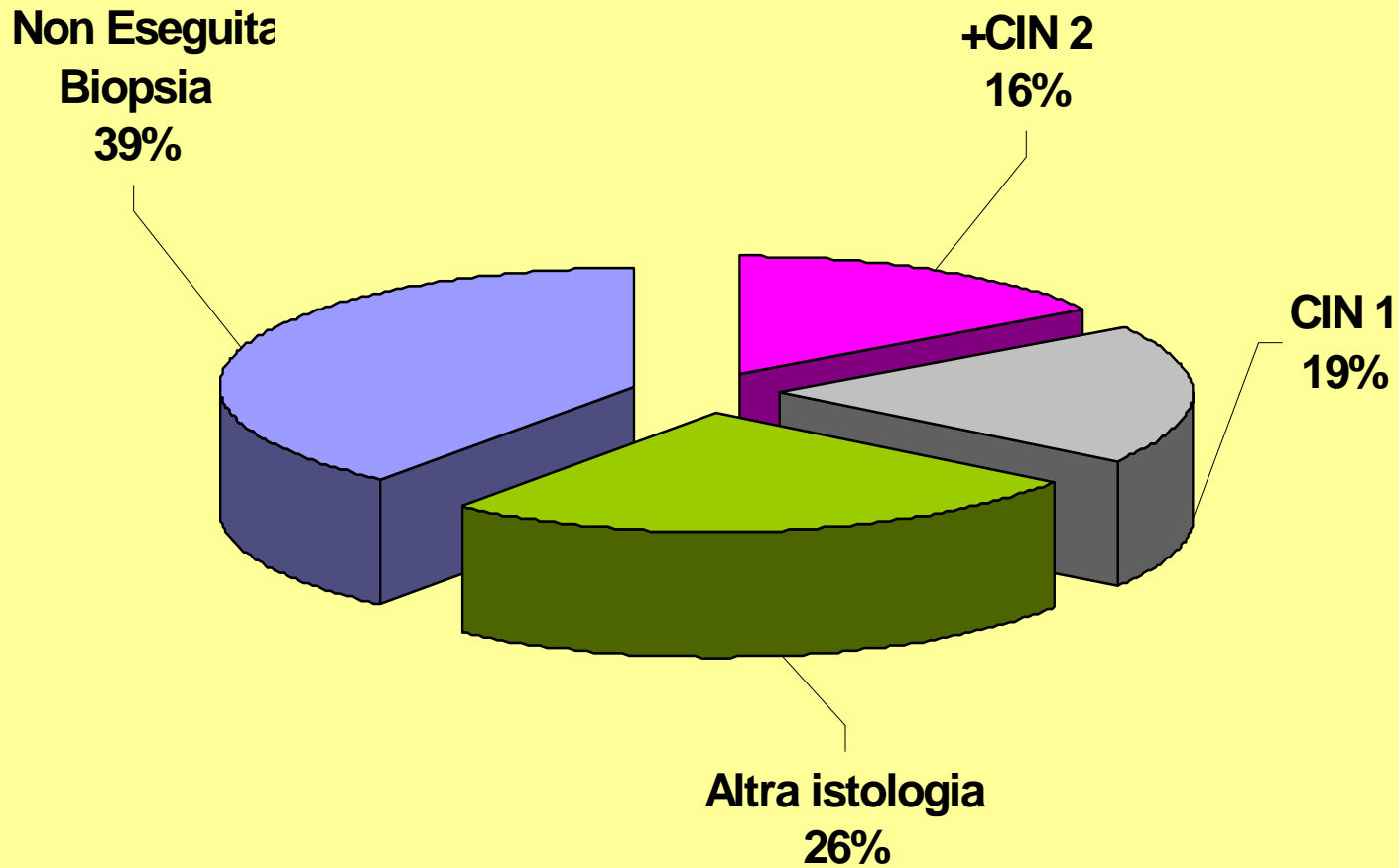
CORRELAZIONE CITO-ISTOLOGICA DEI PAP-TEST DI CUI E' STATA RIPORTATA L'ISTOLOGIA, 2009

CITOLOGIA	ISTOLOGIA					Non eseguita Biopsia	TOTALI
	Ca Inv.	CIN2 CIN3	CIN1	Inadeguato	Altra istologia		
CTM/Ca inv.	4	9	0	0	0	0	13
HSIL	12	243	61	0	53	36	405
LSIL	2	173	498	4	494	788	1959
ASC-H	1	84	35	0	52	29	201
ASCUS/ASC-US	0	47	157	5	295	627	1131
AGUS/AGC	6	14	12	1	96	43	172
ALTRO	0	1	1	0	4	82	88
TOTALI	25	9	764	10	994	1.605	3.969

	2007	2008	2009
VPP* di Ascus+	14,5	14,0	15,3
VPP* di Lsil	9,3	7,4	8,9
VPP* di Ascus/Ascu-us	4,2	3,2	4,2

* per CIN2 +

Risultati delle colposcopie



CORRELAZIONE COLPO-ISTOLOGICA DEI 2.243 CASI IN CUI IL VALORE E' DISPONIBILE - ANNO 2009

Colposcopia	Diagnosi istologica piu' grave							
	Normale/ condilomi	CIN 1	CIN 2	CIN 3	Adeno Ca in situ	Squamo Ca	Adeno Ca	TOTALE
Normale GSC visibile	206	71	18	15	1	0	2	313
Normale GSC non visibile	141	35	9	9	0	0	2	196
Anormale grado 1 (G1)	543	520	143	94	2	2	1	1.305
Anormale grado 2 (G2)	64	83	94	168	7	9	0	425
Anormale-sospetta neoplasia invasiva	0	0	0	1	0	2	1	4
TOTALE	954	709	264	287	10	13	6	2.243

	2006	2007	2008	2009
VPP G1	17,2	16,7	15,1	18,5
VPP G2	57,5	65,0	69,2	<u>65,4</u>

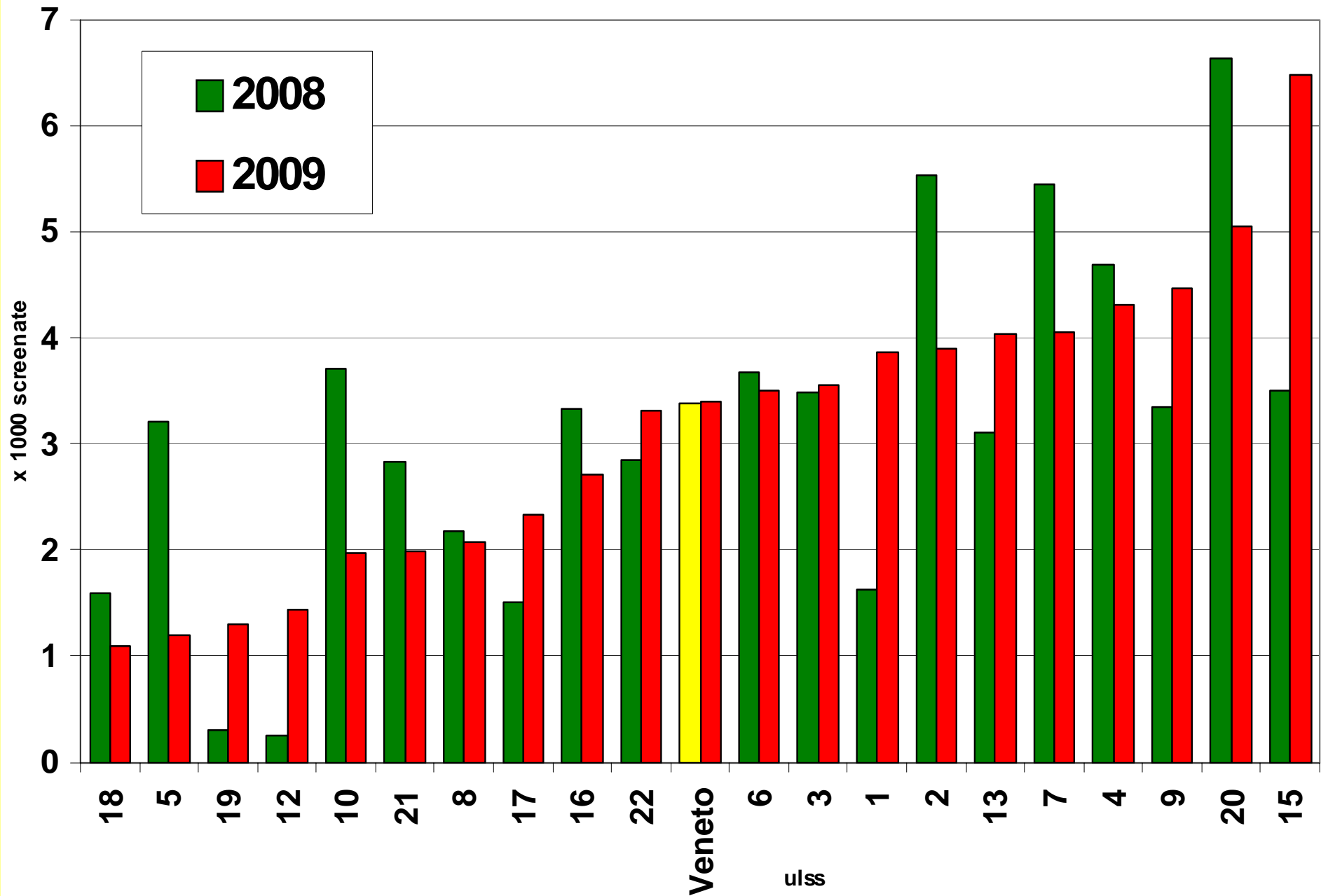
INDICATORI DEL 2^ LIVELLO

	Veneto				Standard GISCi	Medie Naz. 2006
	2006	2007	2008	2009		
Adesione colpo per HSIL+	92.4	89.9	93.8	93.7	> 90% Acc > 95% Des	87.1%
VPP Biopsia per CIN 1 +	53	54.9	58.9	57.5		85%
VPP ASCUS+ per CIN 2+	13.4	13.9	14.2	15.5		16.1%
VPP ASCUS + per CIN 1+	30.1	28.8	32.4	35.0		
VPP ASC-H per CIN 2+	47.3	50.6	41.8	42.3		
Detection rate per CIN 2+	2.9‰	2.9‰	3.4‰	3.4‰		2.6‰**

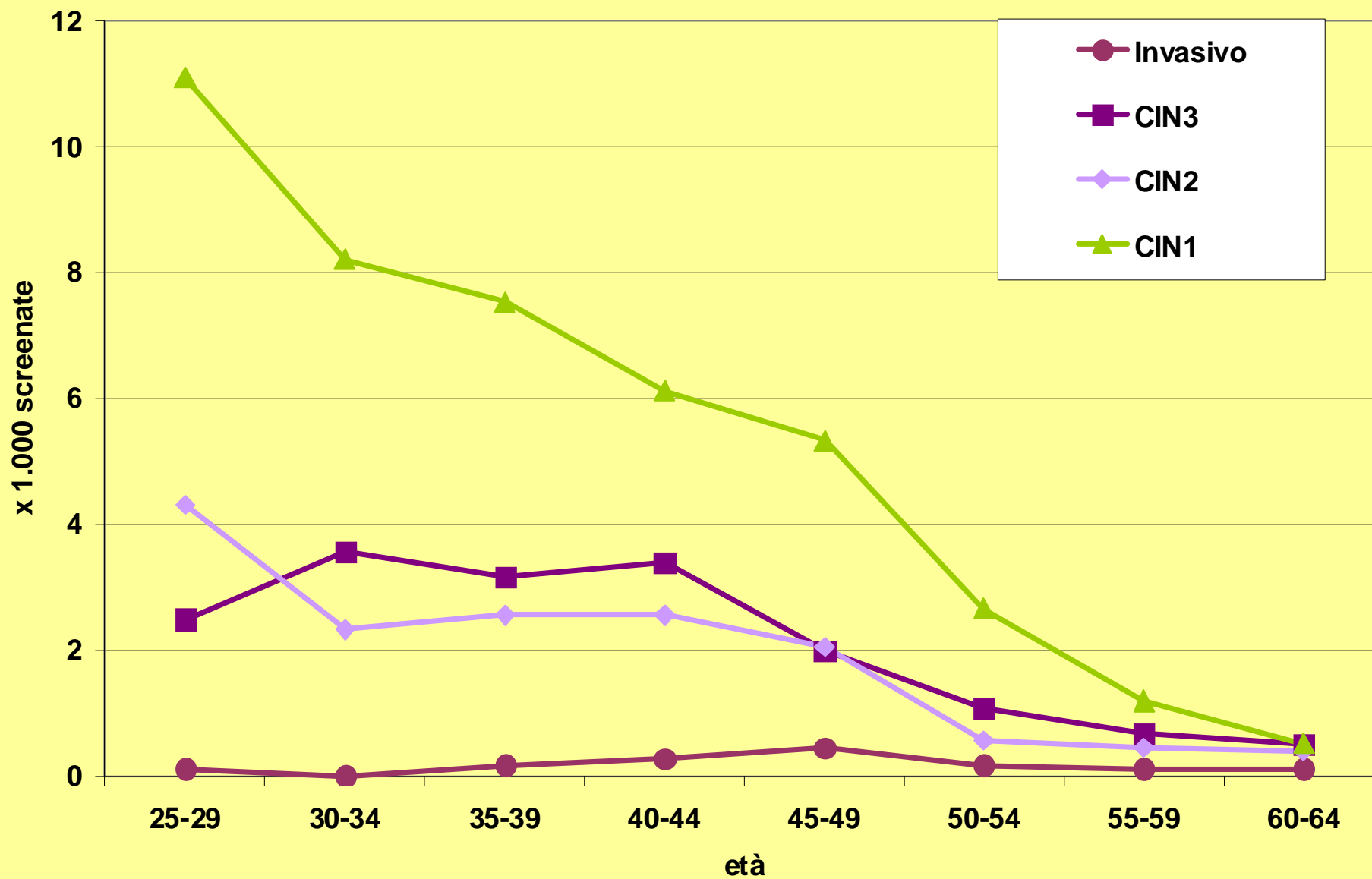
* ASC-US + ASCUS

** DR STANDARDIZZATA

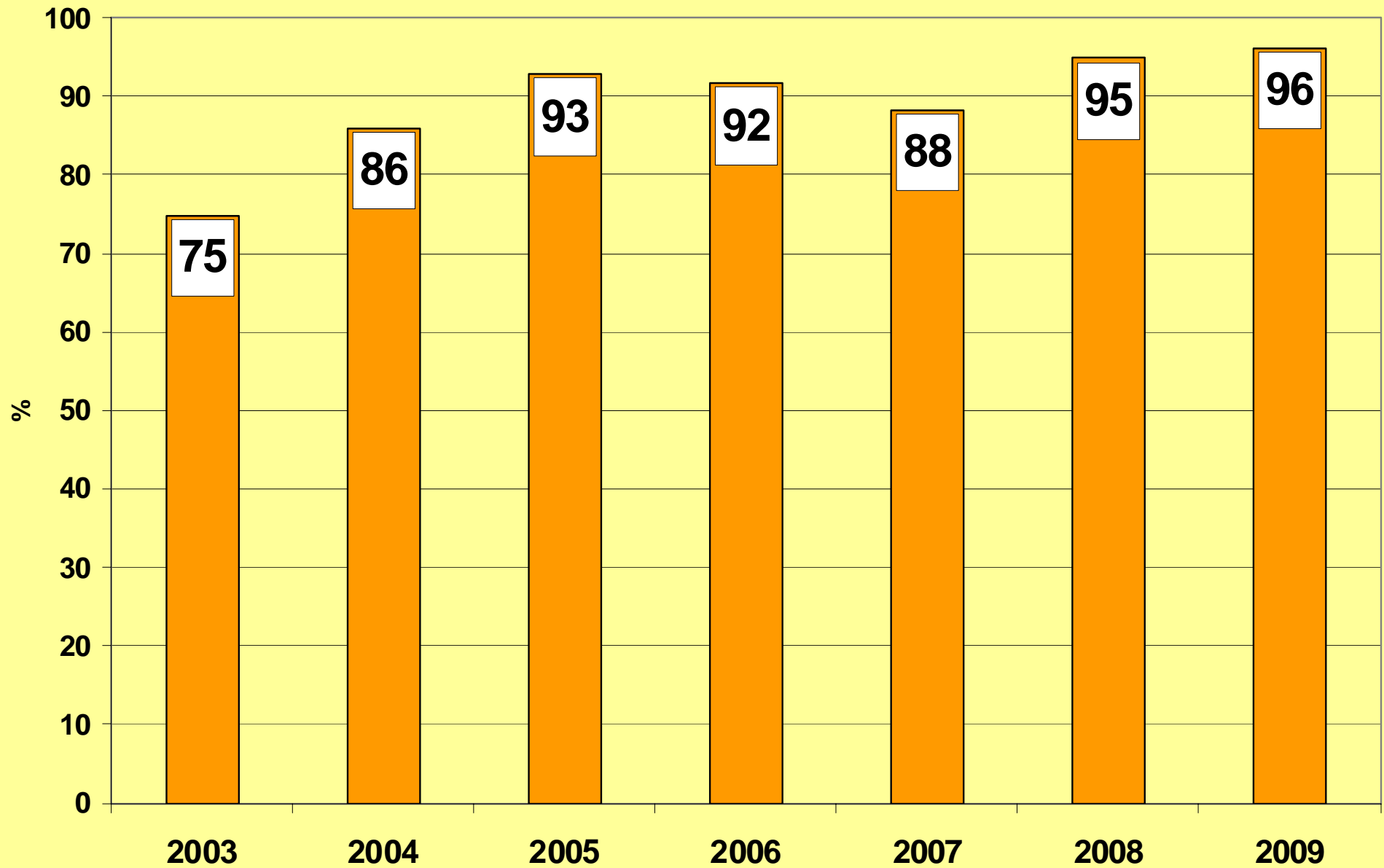
Detection Rate: 2008/2009



Distribuzione delle lesioni per età



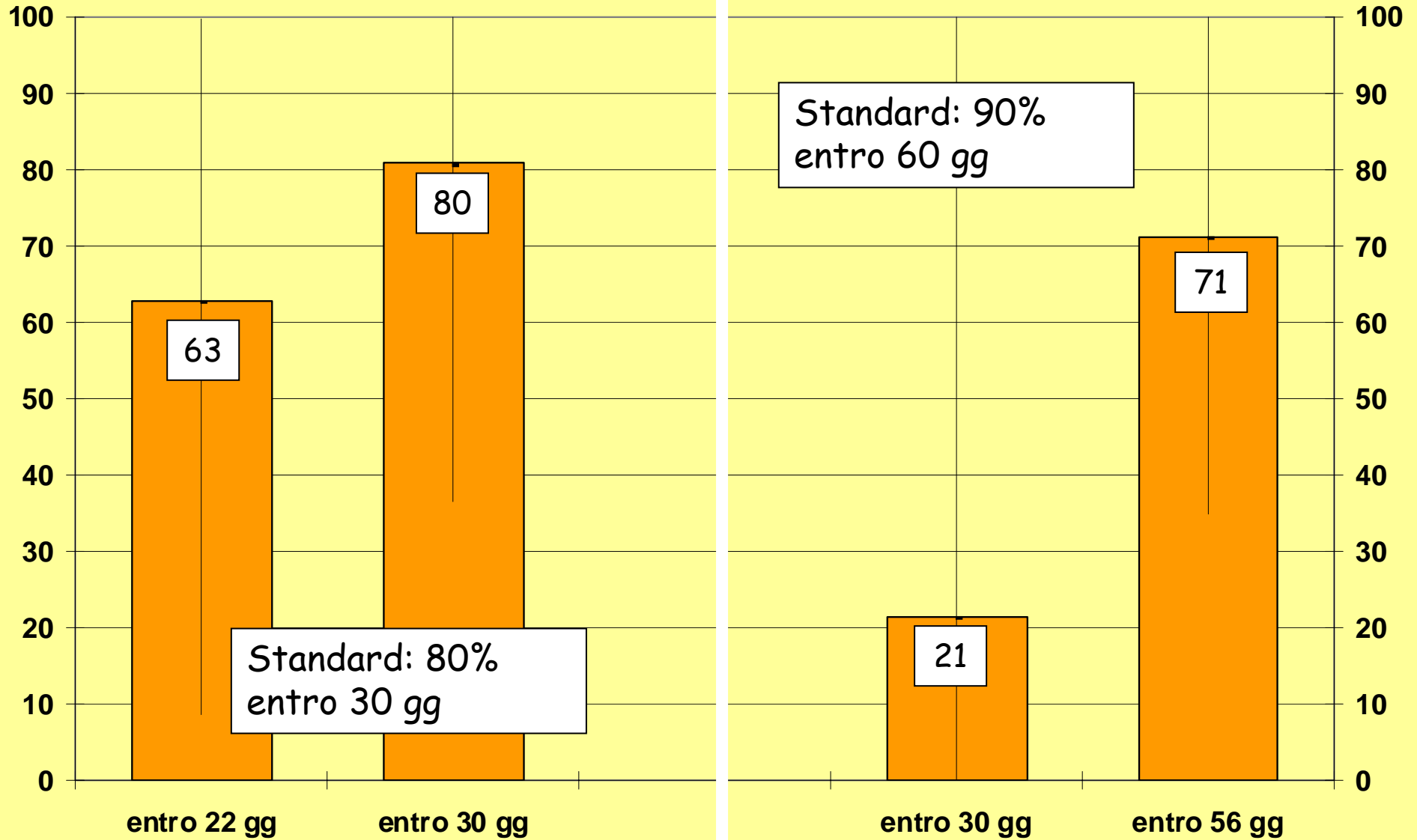
Non trattamento dei CIN 1



Tempestività invio

risposta negativa

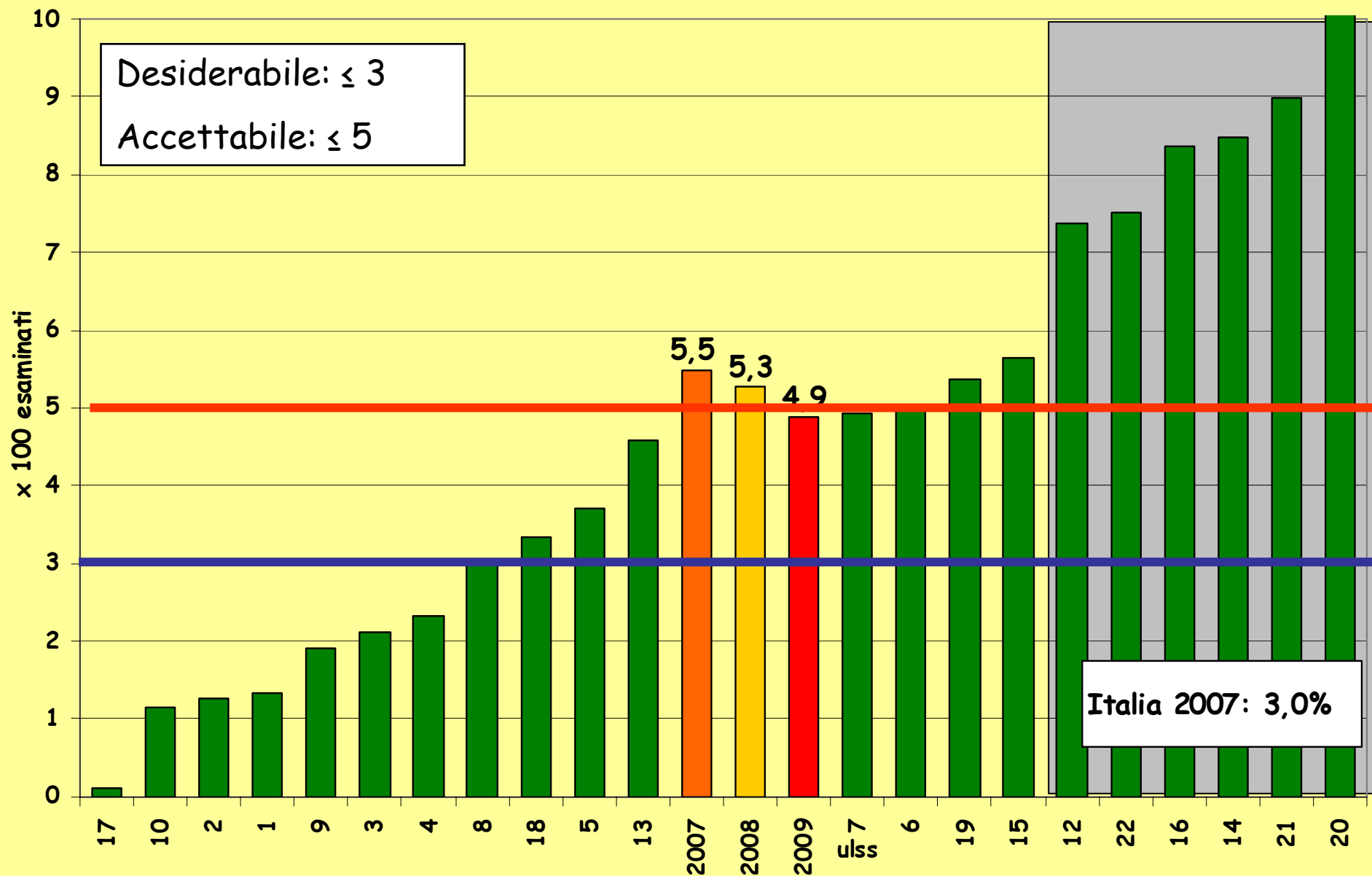
approfondimenti



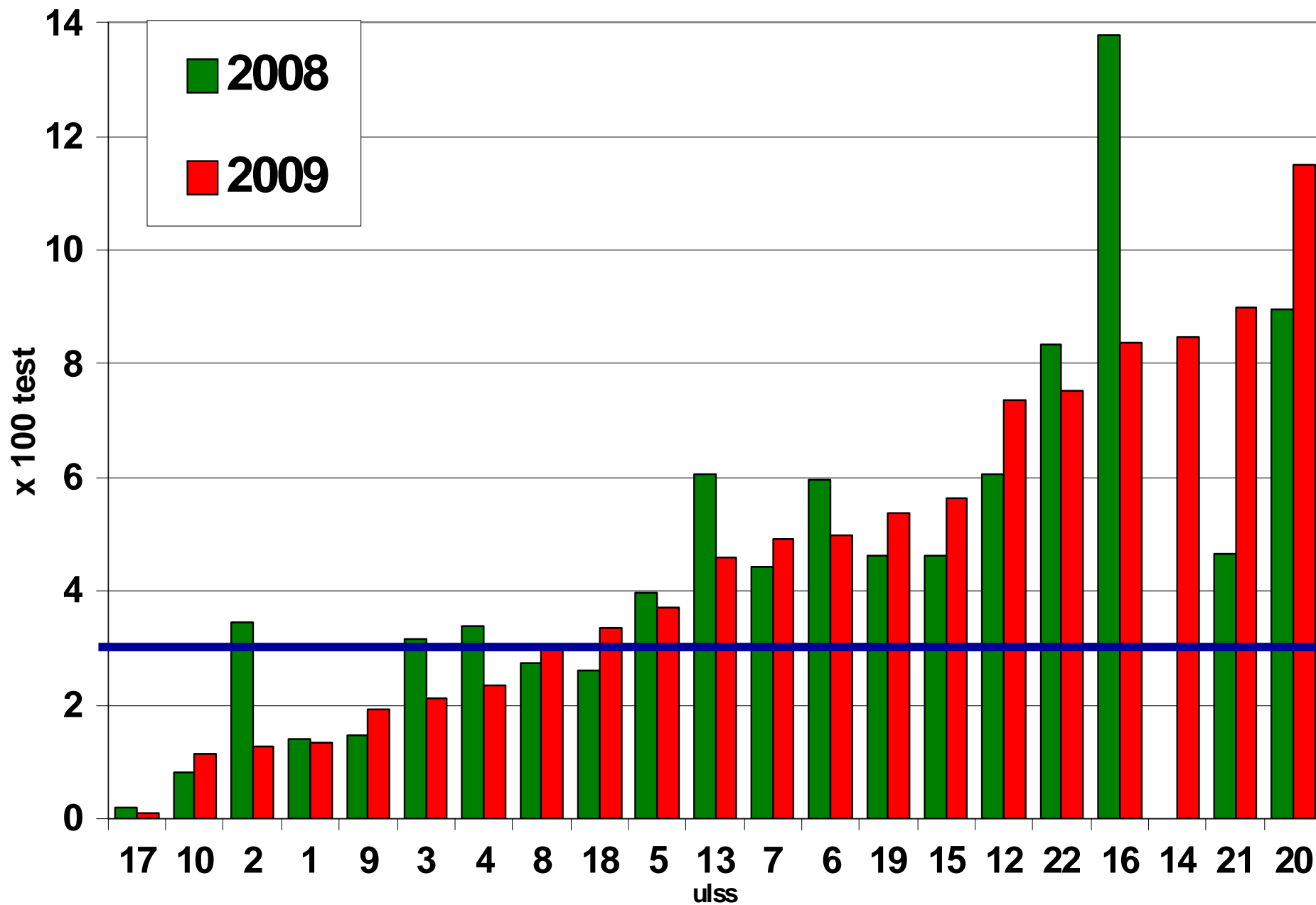
FOCUS SUGLI INADEGUATI



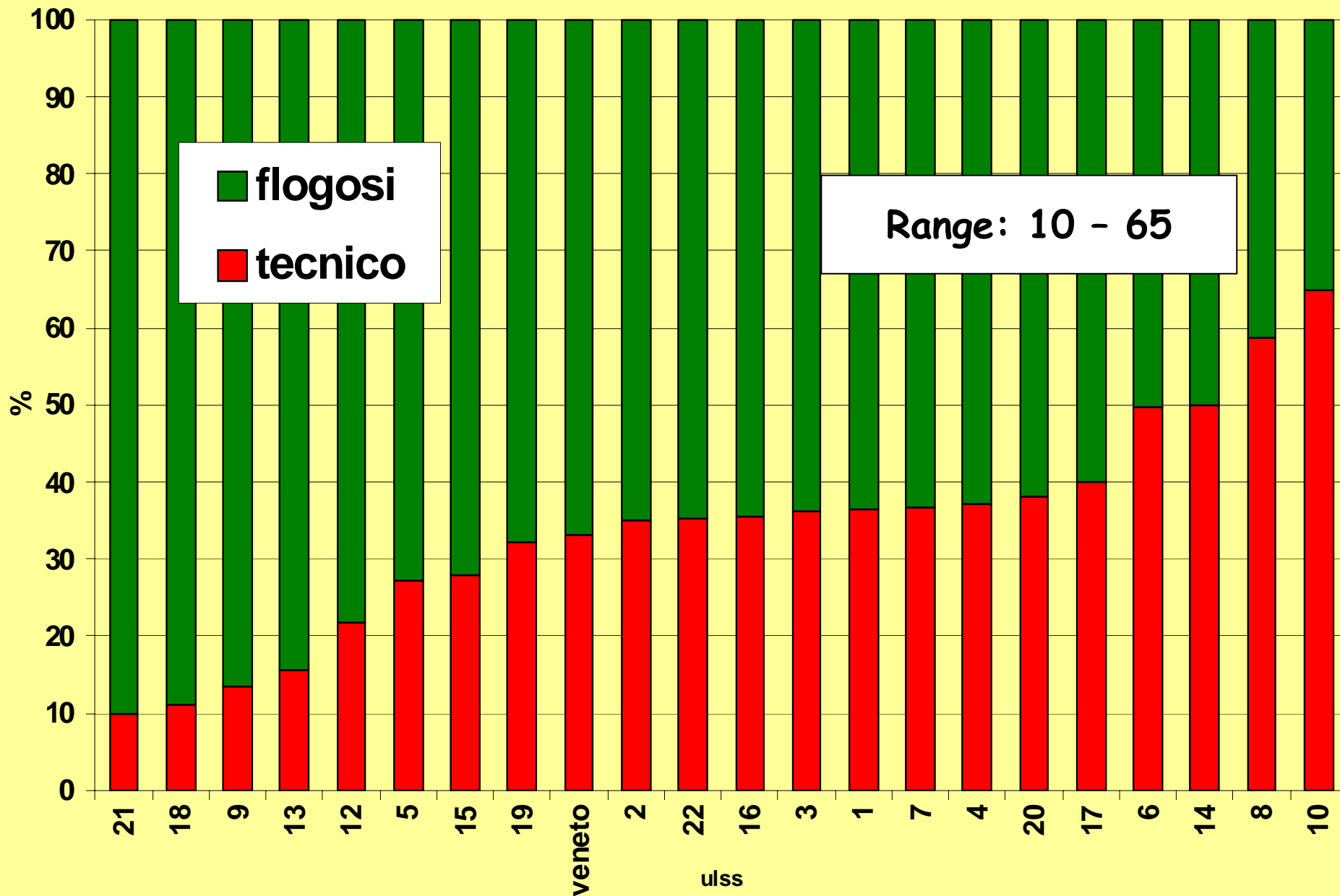
Inadeguati - 2009



Confronto Inadeguati: 2008 - 2009



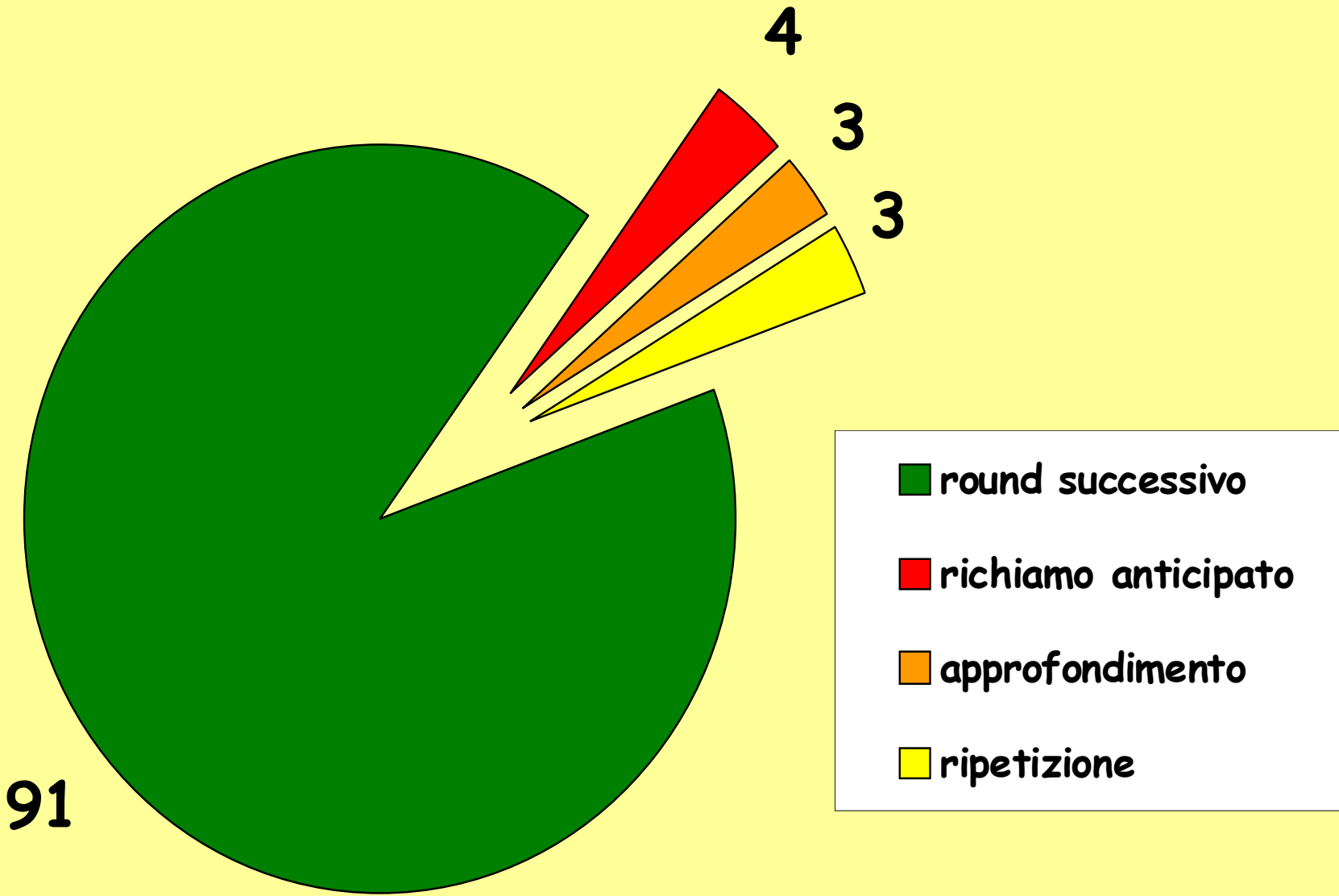
Motivo di indeguatezza



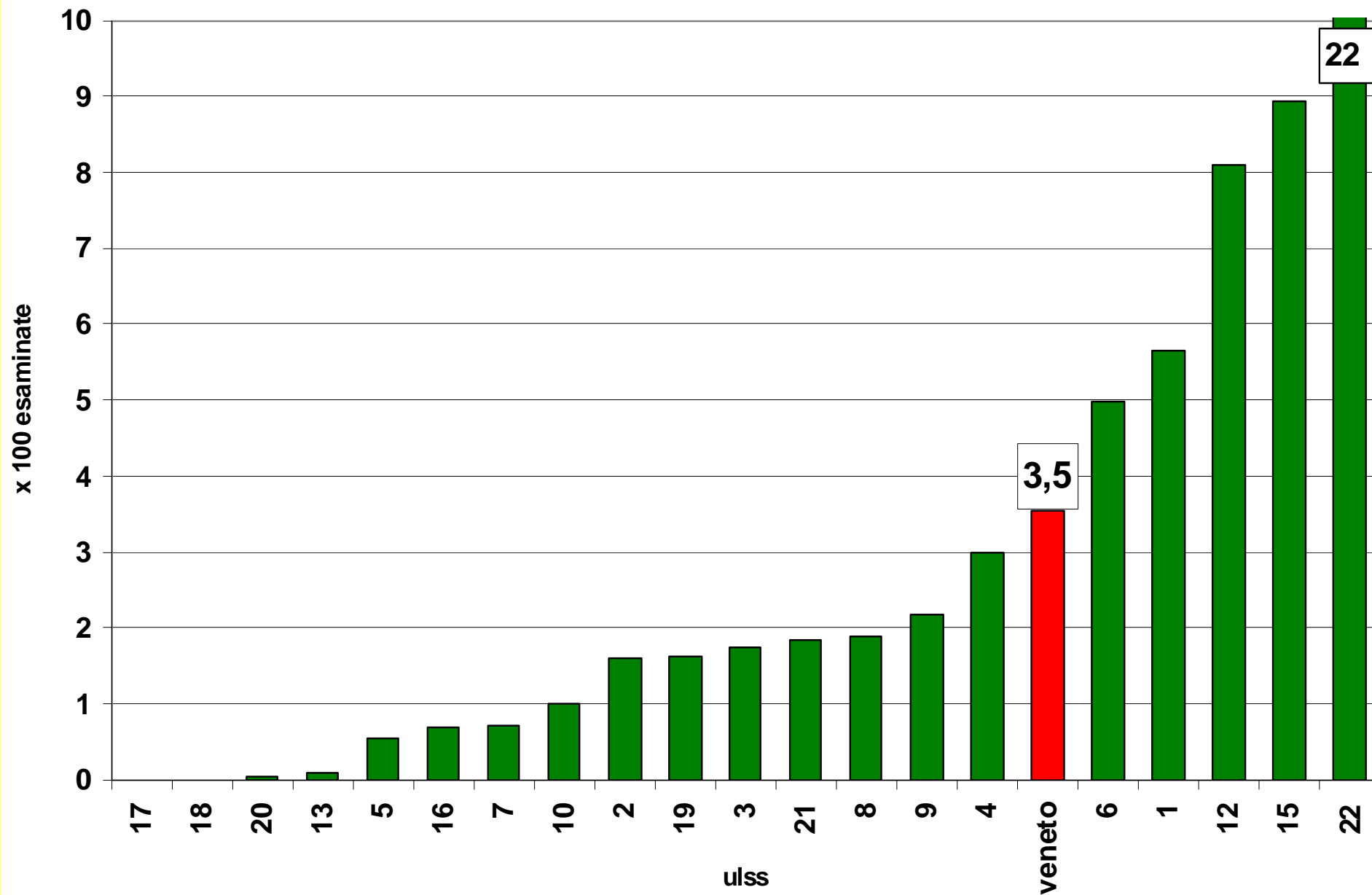


Un po' di luce: richiami anticipati

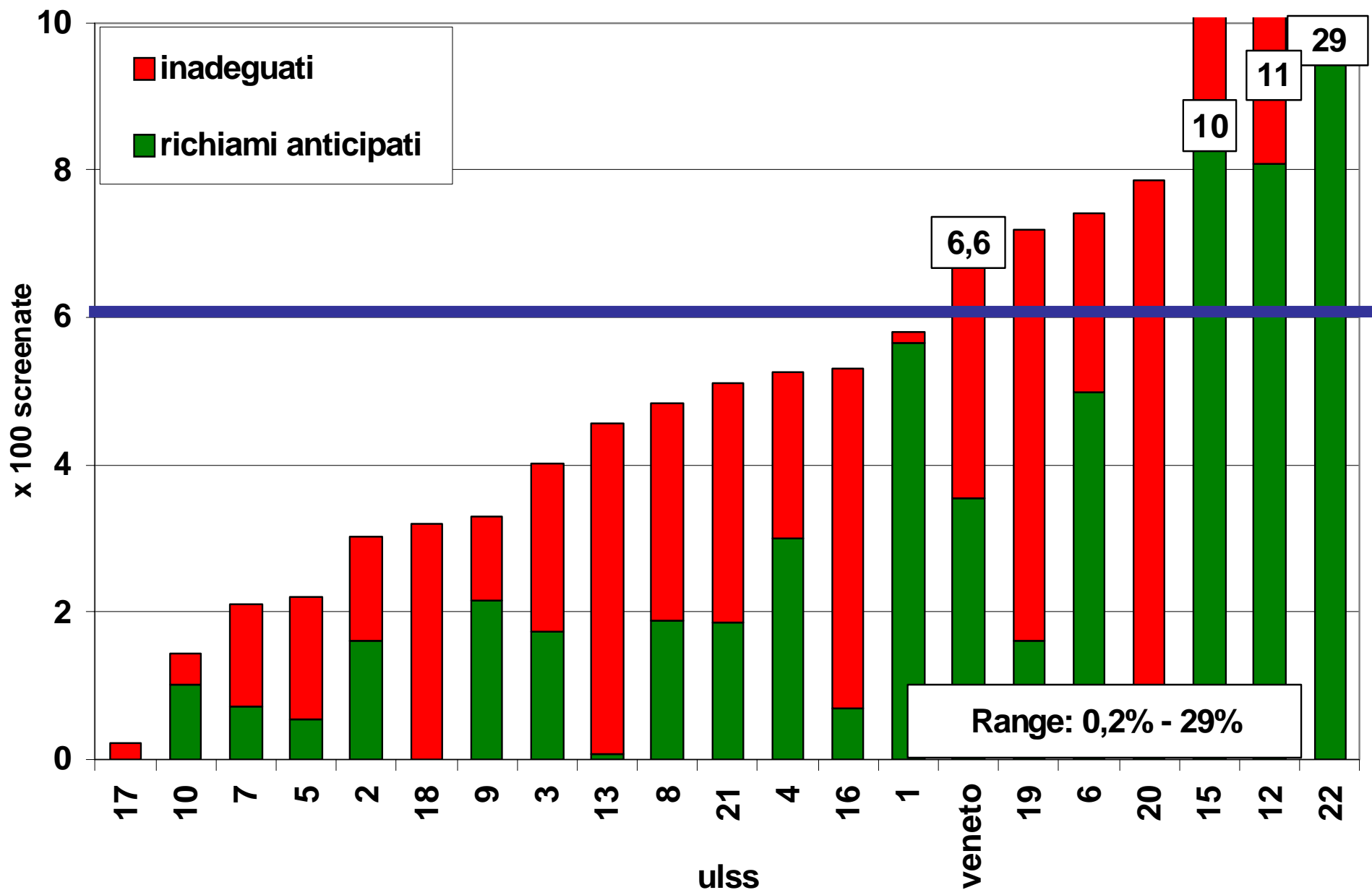
Distribuzione raccomandazioni di 1° livello: 2009



Indicazione a ripetere la citologia < 3 anni



Indicazione a ripetere la citologia < 3 anni + inadeguati



Tavolozza - screening citologico 2009

INDICATORI 2009 CITO	1	2	3	4	5	6	7	8	9	10	11	12	13	14	15	16	17	18	19	20	21	22	Vene to
Estensione annuale	Green	Green	Green	Green	Light Green	Light Green	Green	Green	Green	Orange	Light Green	Green	Red	Light Green	Orange	Orange	Light Green	Green	Orange	Light Green	Light Green	Light Green	Light Green
Adesione grezza	Green	Green	Light Green	Green	Light Green	Red	Green	Green	Green	Red	Red	Light Green	Red	Orange	Red	Orange	Green	Green	Orange	Orange	Orange	Orange	Light Green
Tempo invio risposta negativa	Green	Red	Orange	Green	Green	Light Green	Green	Light Green	Red	Green	Green	Green	Green	Green	Green	Green	Green	Green	Light Green	Light Green	Red	Green	Green
Tempo per invio a colposcopia	Red	Orange	White	Orange	Light Green	Light Green	Green	Orange	Red	Orange	Orange	Green	Green	Green	Orange	Green	Orange	Green	Light Green	Light Green	Green	Green	Light Green
Tasso di Inadeguati	Green	Green	Green	Green	Light Green	Orange	Orange	Green	Green	Green	Red	Orange	Red	Red	Red	Green	Light Green	Red	Red	Red	Red	Red	Orange
Invio in colposcopia	Green	Green	Light Green	Light Green	Light Green	Green	Green	Green	Green	Green	Green	Green	Green	Light Green	Orange	Green	Light Green	Light Green	Green	Green	Light Green	Light Green	Green
Adesione alla colposcopia	Green	Green	Red	Green	Orange	Orange	Green	Green	Orange	Orange	Light Green	Green	Green	Red	Light Green	Light Green	Red	Light Green	Light Green	Green	Green	Green	Orange
Adesione a colposcopia per HSIL+	Green	Green	Orange	Green	Green	Green	Green	Light Green	Red	Orange	Green	Red	Light Green	Light Green	Green	Red	Red	Light Green	Orange	Green	Green	Light Green	Light Green
VPP biopsia per CIN1+	Orange	Orange	Green	Red	Red	Red	Red	Green	Orange	Orange	Red	Orange	Red	Red	Red	Green	Red	Orange	Light Green	Orange	Green	Red	Red
Non trattamento per CIN1	Green	Green	Light Green	Green	Orange	Green	Red	Green	Green	Light Green	Red	Orange	Green	Green	Light Green	Green	Green	Red	Green	Green	Green	Green	Green

**Grazie a tutti gli
operatori**

Grazie a tutti per l'attenzione..